

Section1. Night fog development

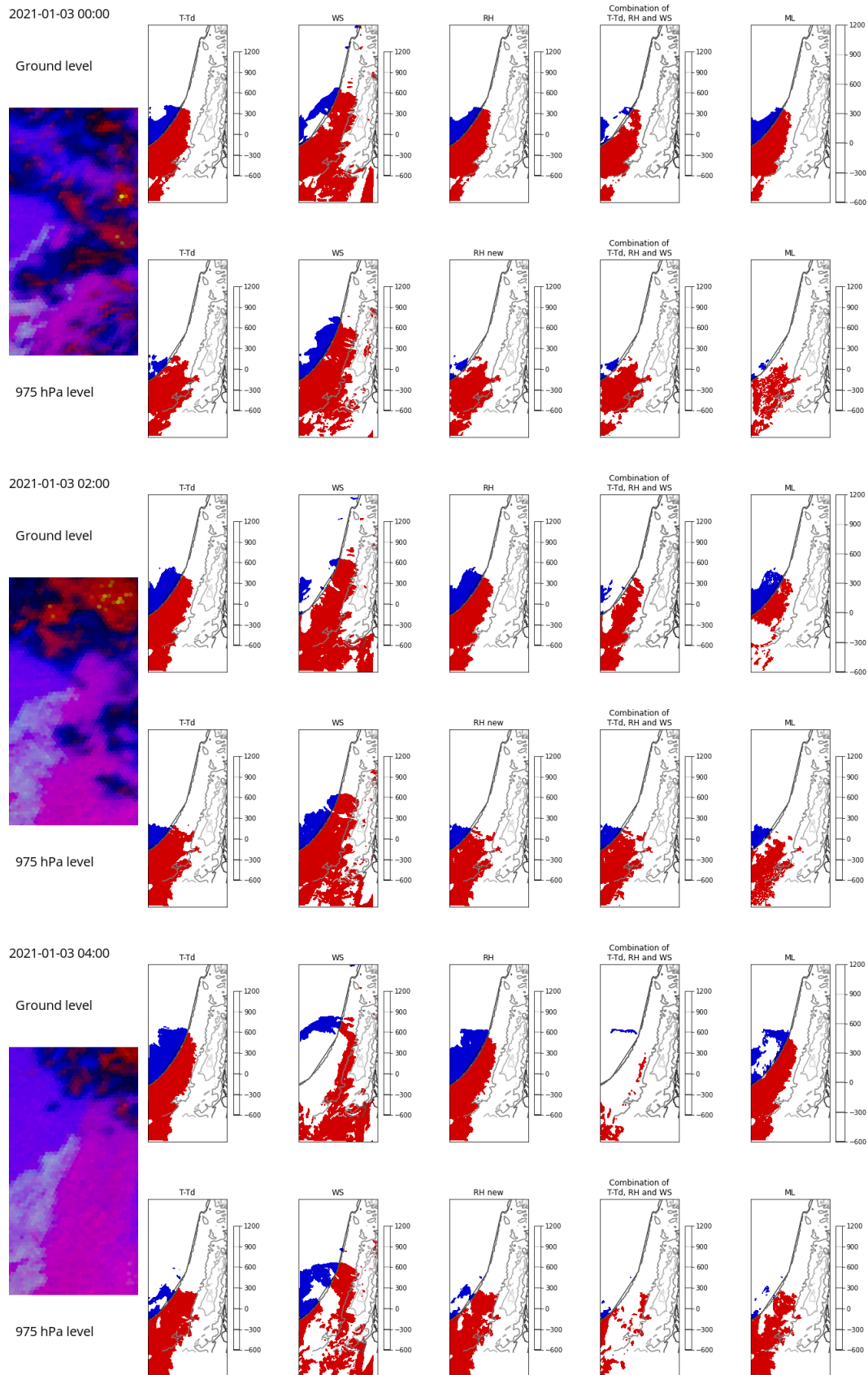


Figure 13. Fog development during 3rd January 2021, 00, 02 and 04 UTC

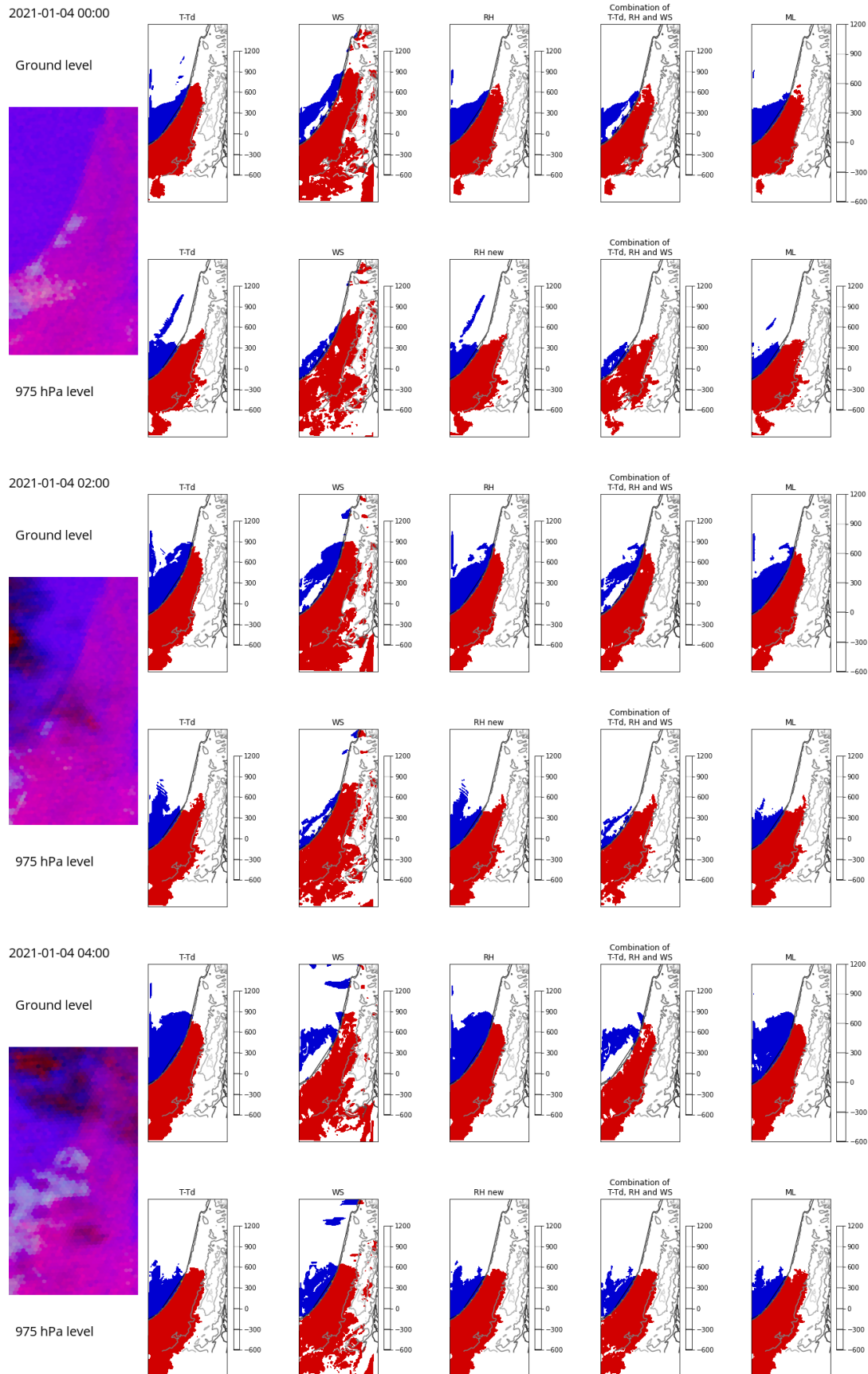


Figure 14. Fog development during 4th January 2021, 00, 02 and 04 UTC

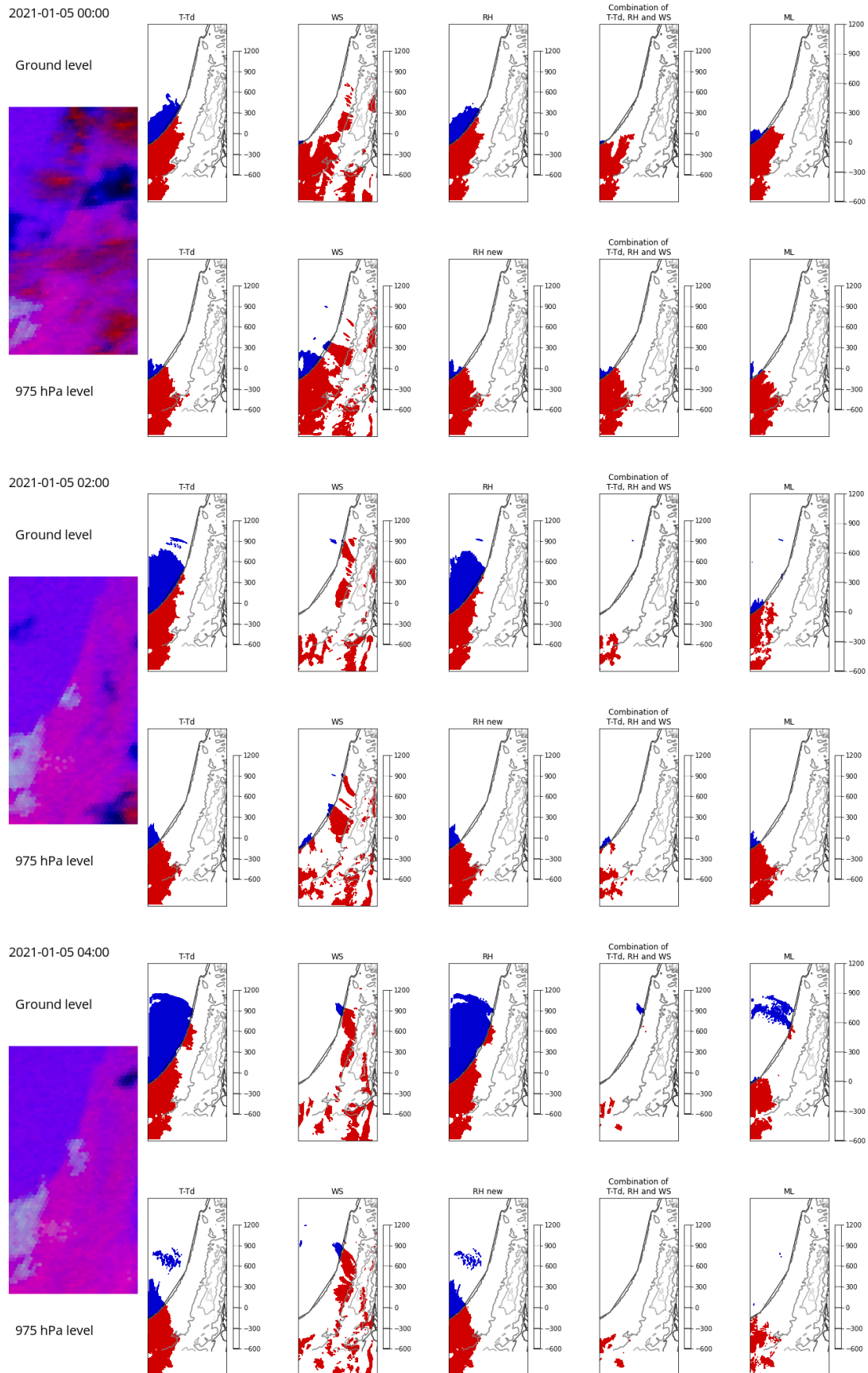
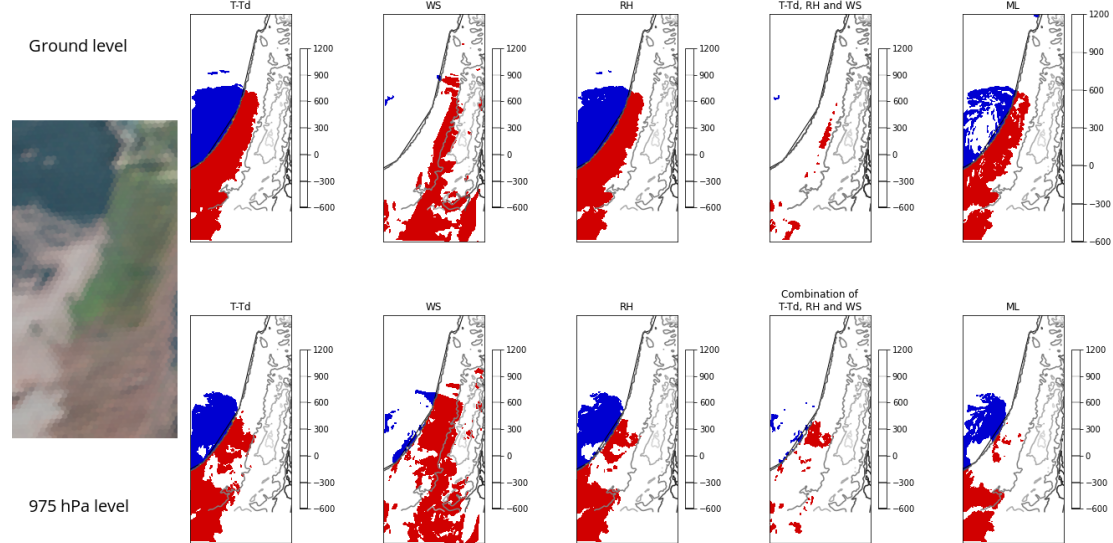


Figure 15. Fog development during 5th January 2021, 00, 02 and 04 UTC

Section 2. Day fog development

2021-01-03 06:00:00



2021-01-03 08:00:00

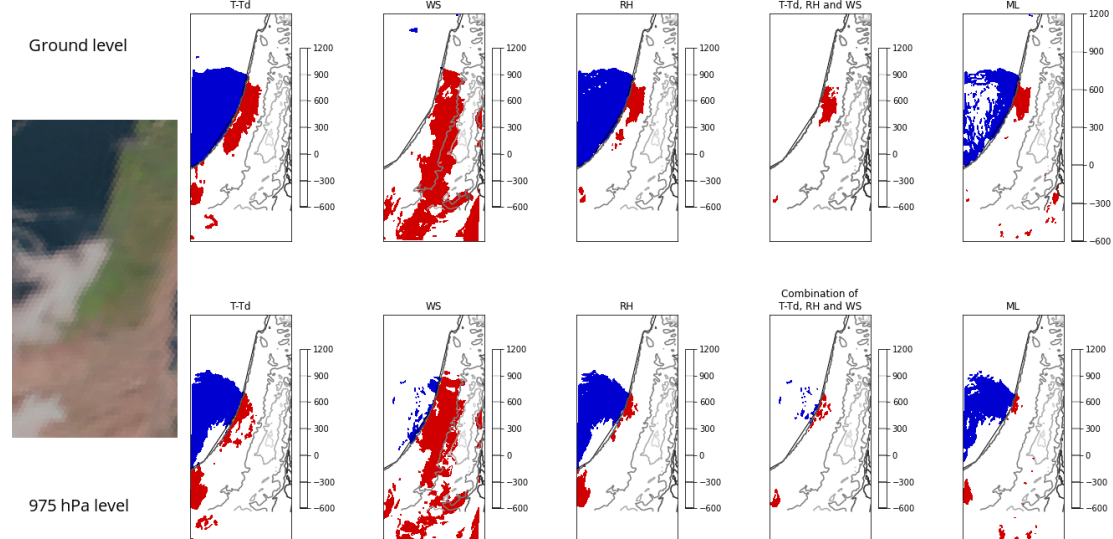


Figure 16. Fog development during 3rd January 2021, 06 and 08 UTC

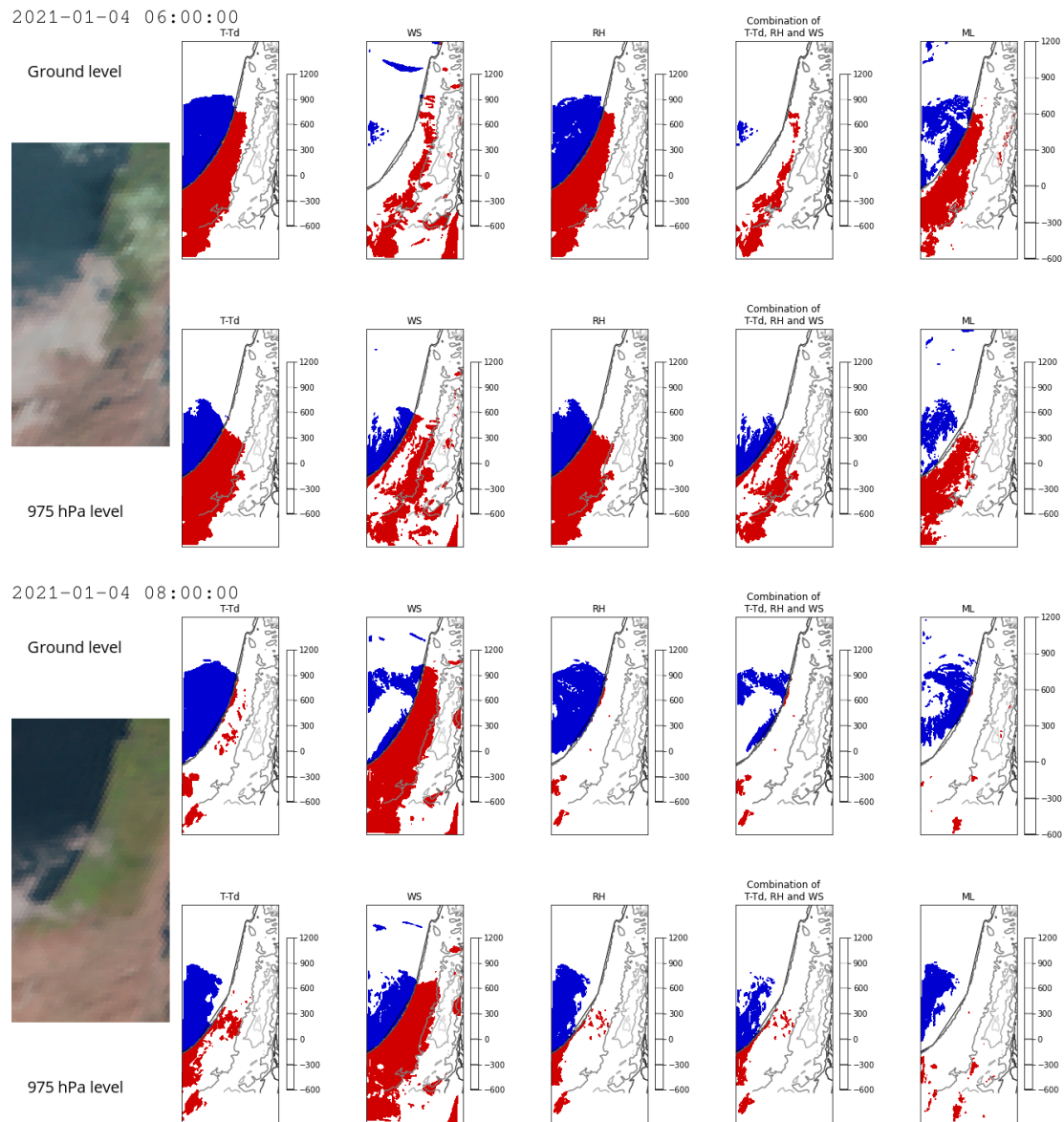


Figure 17. Fog development during 4th January 2021, 06 and 08 UTC

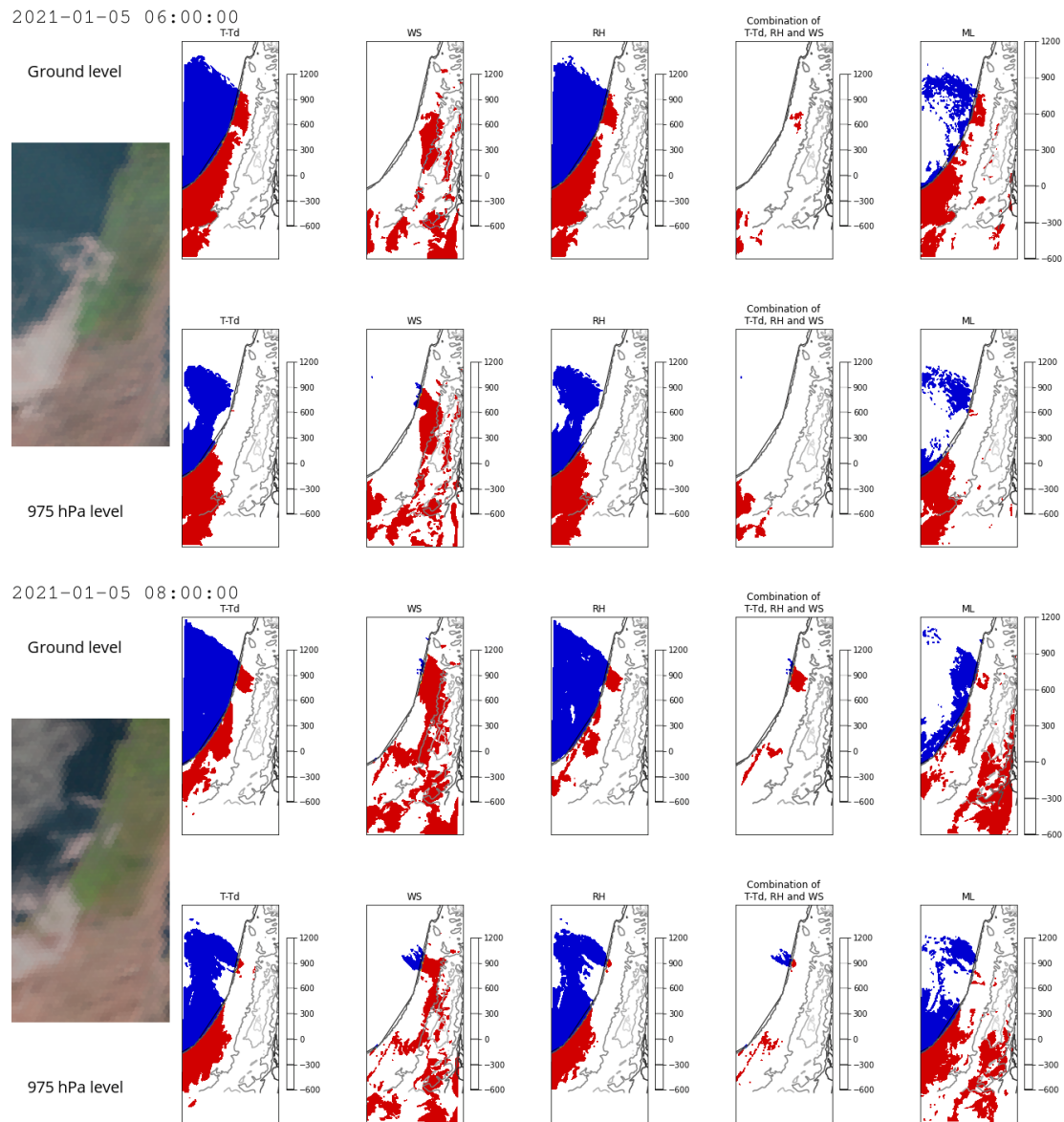


Figure 18. Fog development during 5th January 2021, 06 and 08 UTC

Section 3. T-Td, RH and WS distribution, trimmed by the GBT derived fog, night time

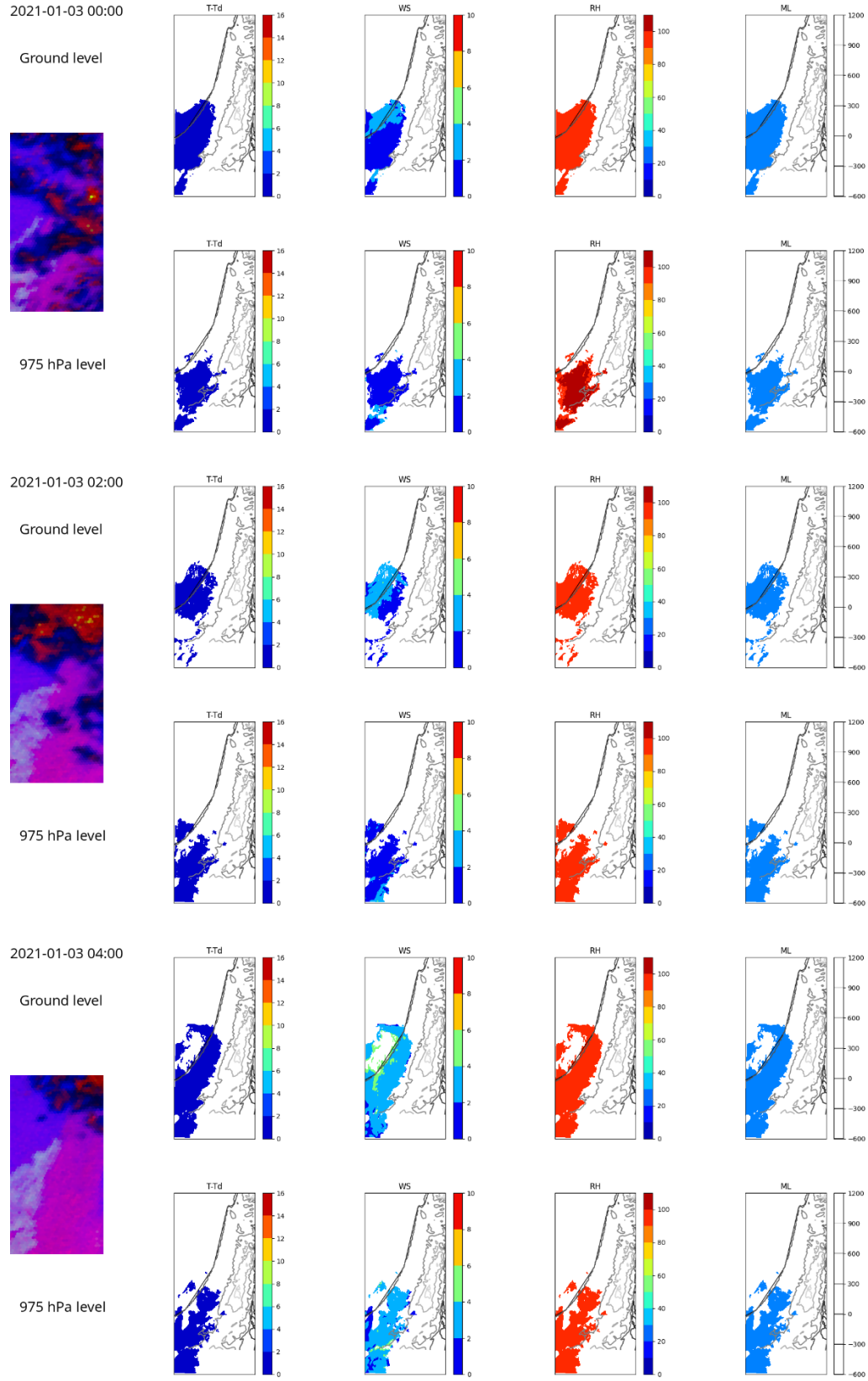


Figure 19. T-Td, RH and WS distribution, trimmed by the GBT derived fog for 3rd January 2021, 00, 02 and 04 UTC

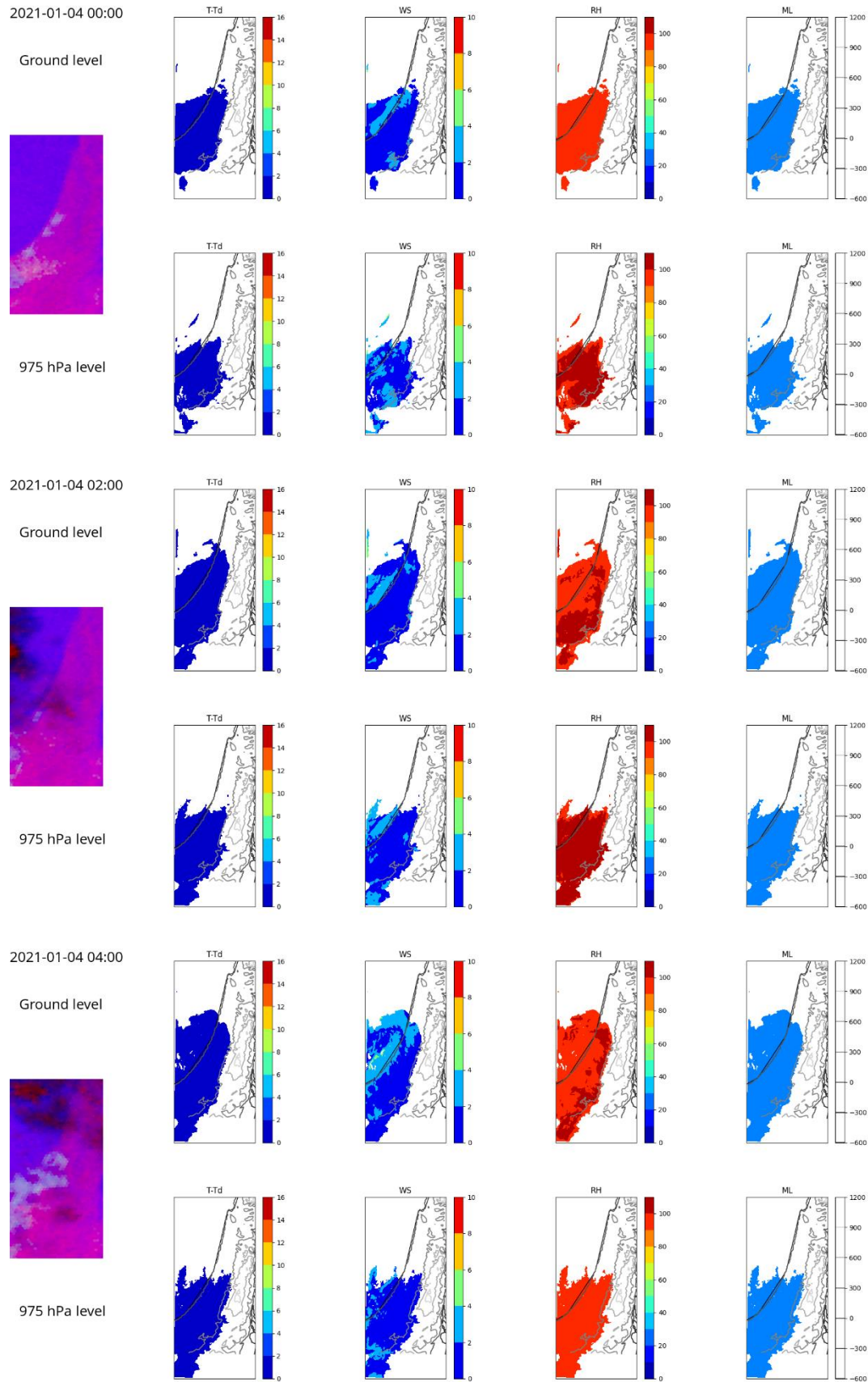


Figure 20. T-Td, RH and WS distribution, trimmed by the GBT derived fog for 4th January 2021, 00, 02 and 04 UTC

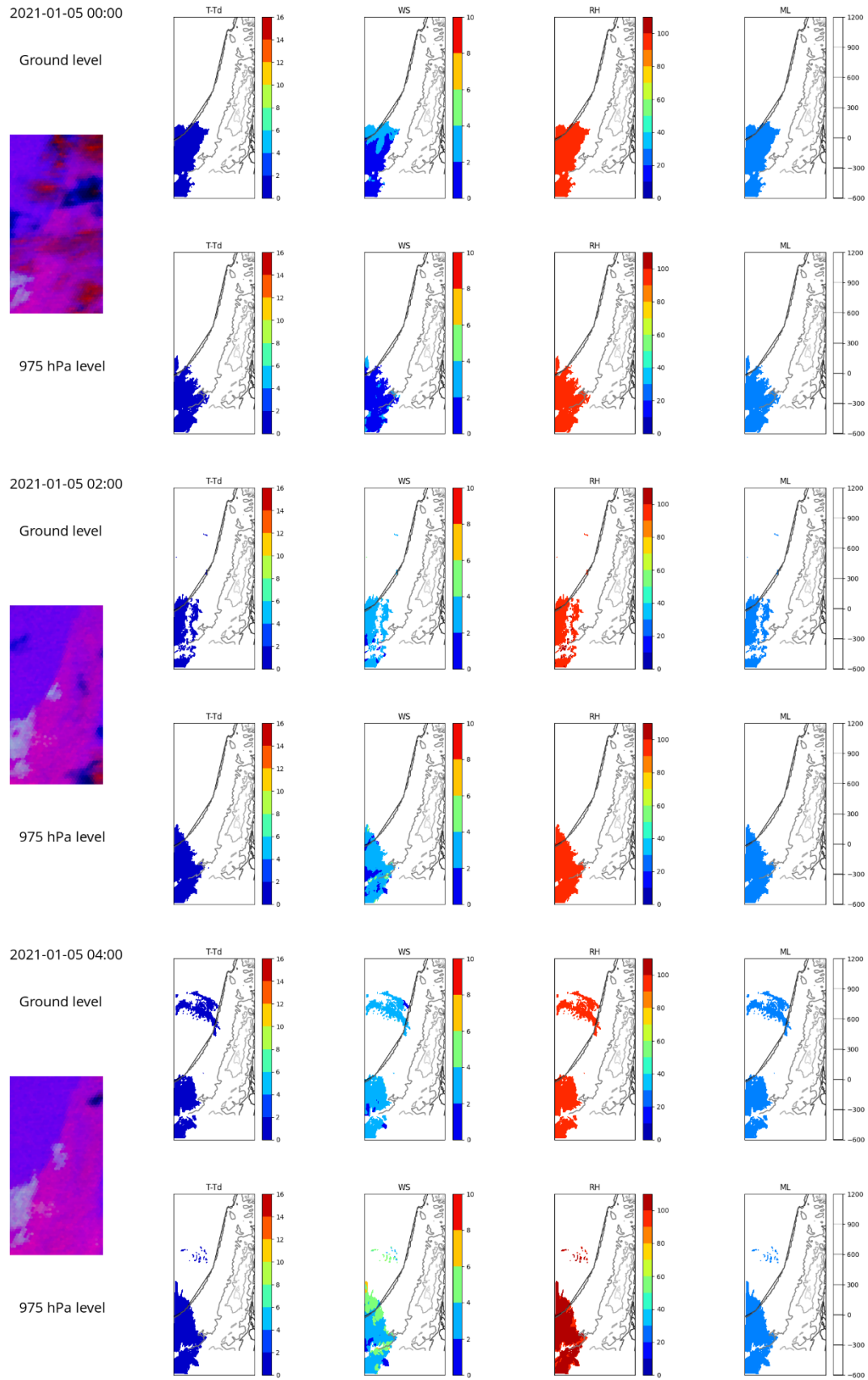


Figure 21. T-Td, RH and WS distribution, trimmed by the GBT derived fog for 5th January 2021, 00, 02 and 04 UTC

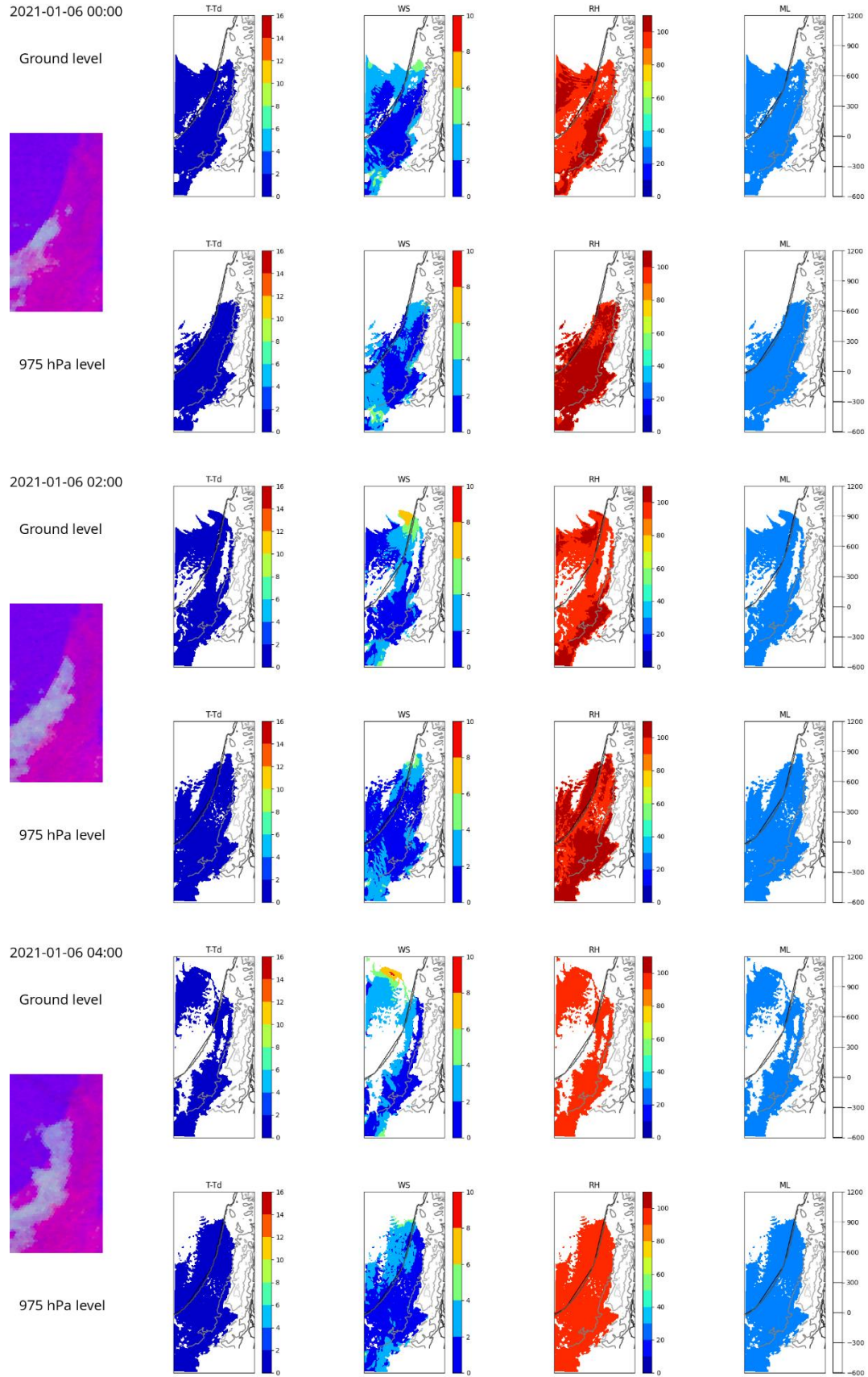
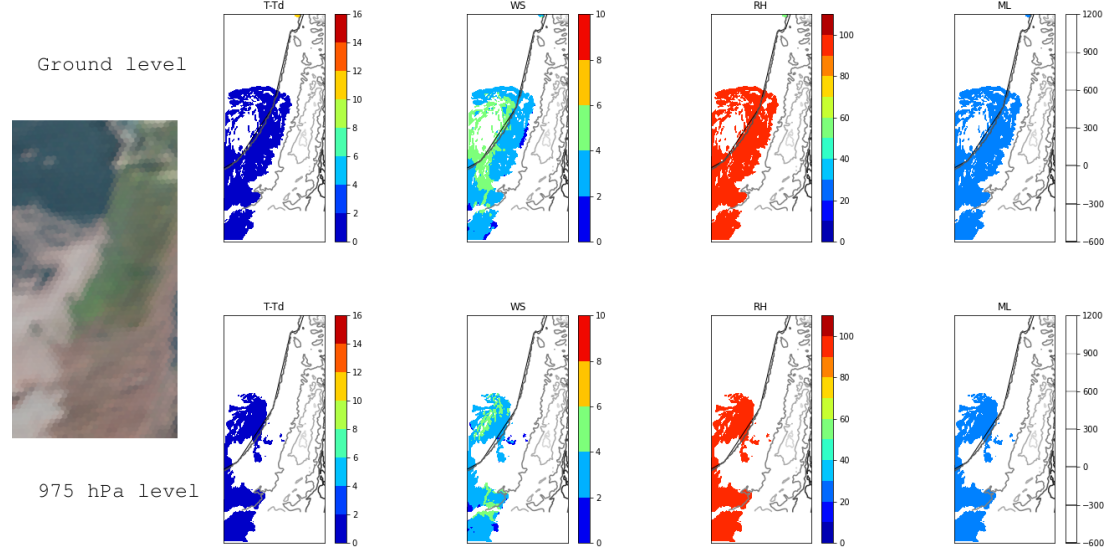


Figure 22. T-Td, RH and WS distribution, trimmed by the GBT derived fog for 6th January 2021, 00, 02 and 04 UTC

Section 4. T-Td, RH and WS distribution, trimmed by the GBT derived fog, day time

2021-01-03 06:00:00



2021-01-03 08:00:00

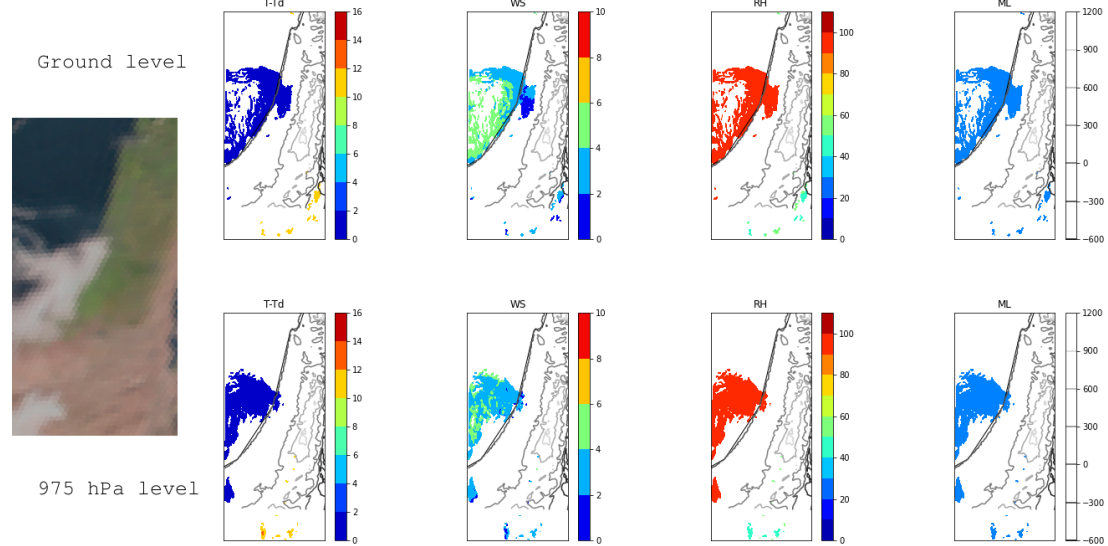
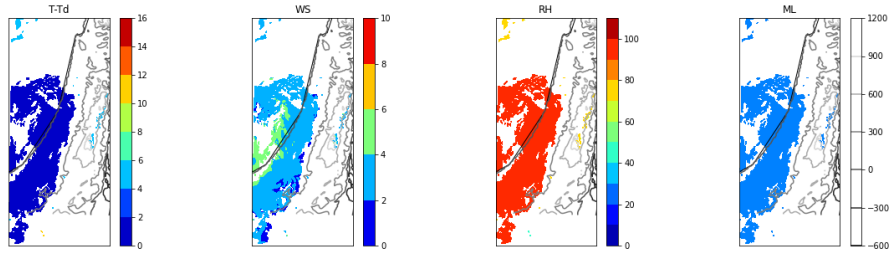
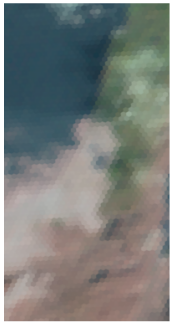


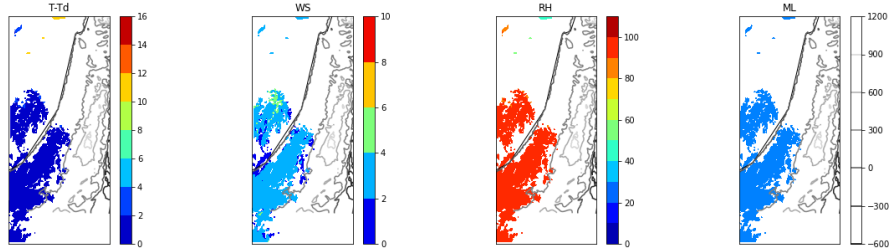
Figure 23. T-Td, RH and WS distribution, trimmed by the GBT derived fog for 3rd January 2021, 06 and 08 UTC

2021-01-04 06:00:00

Ground level

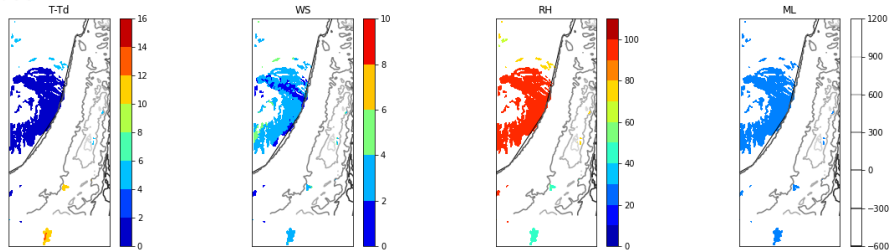
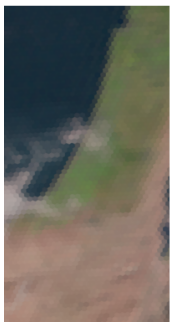


975 hPa level



2021-01-04 08:00:00

Ground level



975 hPa level

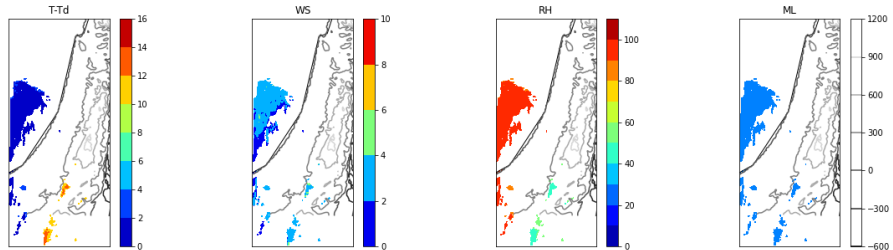
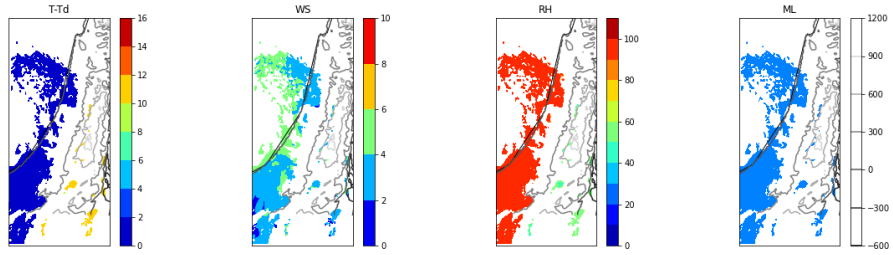
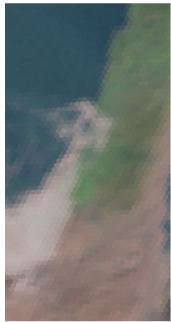


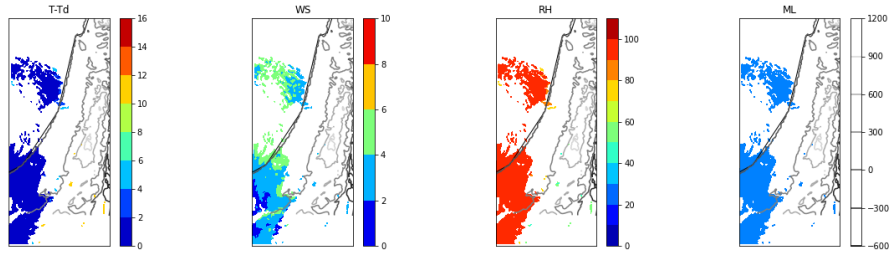
Figure 24. T-Td, RH and WS distribution, trimmed by the GBT derived fog for 4th January 2021, 06 and 08 UTC

2021-01-05 06:00:00

Ground level

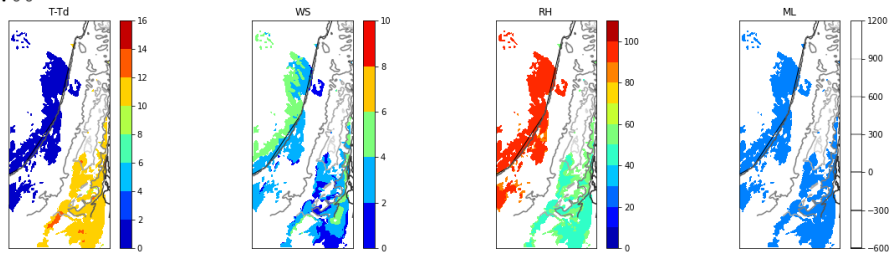
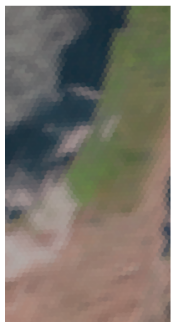


975 hPa level



2021-01-05 08:00:00

Ground level



975 hPa level

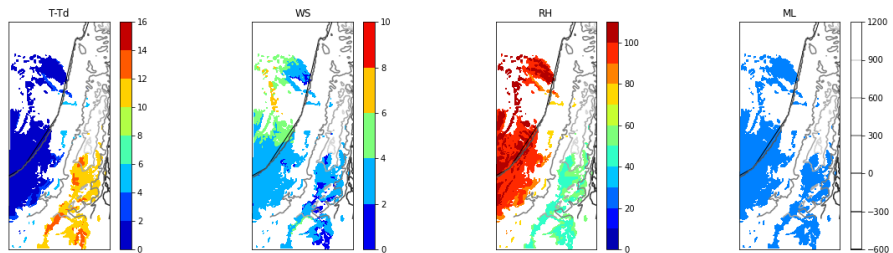


Figure 25. T-Td, RH and WS distribution, trimmed by the GBT derived fog for 5th January 2021, 06 and 08 UTC

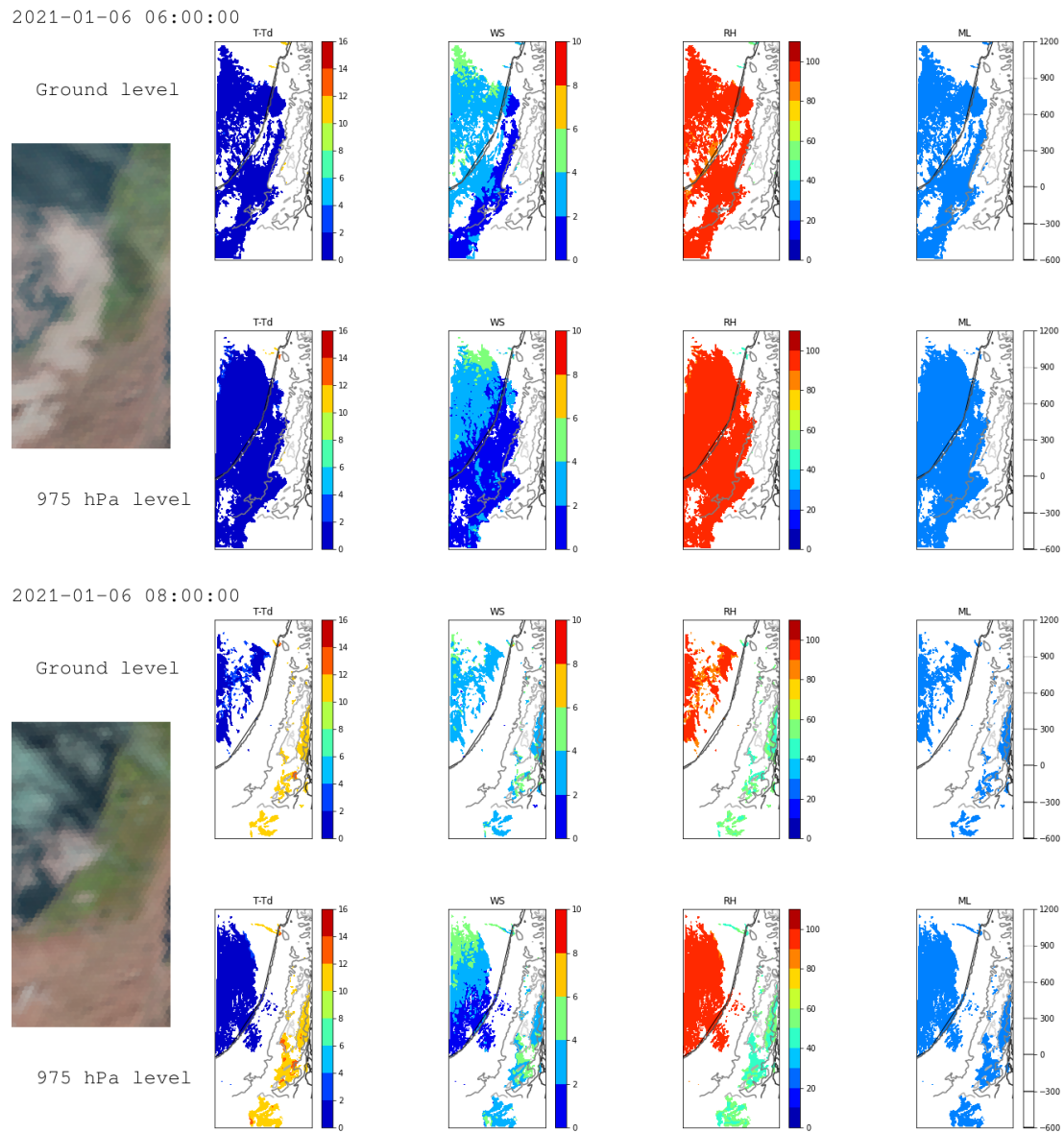


Figure 26. T-Td, RH and WS distribution, trimmed by the GBT derived fog for 6th January 2021, 06 and 08 UTC

Section 5. Radiosonde vertical profiles, compared to the WRF prediction values

Radiosonde : Beit dagan vs WRF , 03/01/21 23 UTC

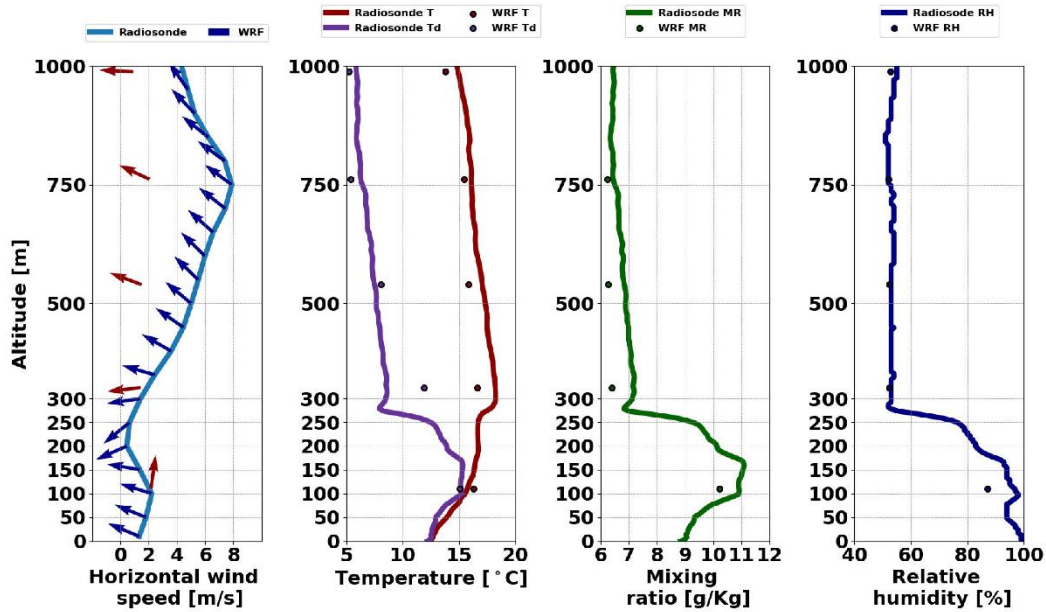


Figure 27. Vertical profiles of winds (arrows), temperature, dew point temperature, relative humidity, and mixing ratio of radiosonde on 3rd of January 2021, 23 UTC. Single symbols along the profiles represent the WRF-RTFDDA forecast values at the available vertical levels.

Radiosonde : Beit dagan vs WRF , 04/01/21 23 UTC

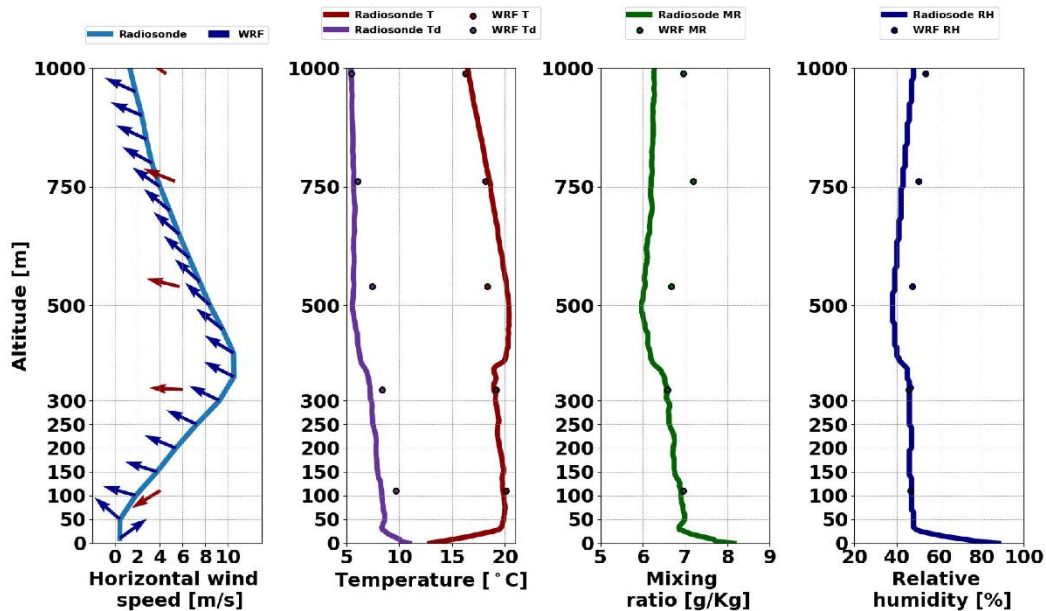


Figure 28. Vertical profiles of winds (arrows), temperature, dew point temperature, relative humidity, and mixing ratio of radiosonde on 4th of January 2021, 23 UTC. Single symbols along the profiles represent the WRF-RTFDDA forecast values at the available vertical levels.

Radiosonde : Beit dagan vs WRF , 06/01/21 23 UTC

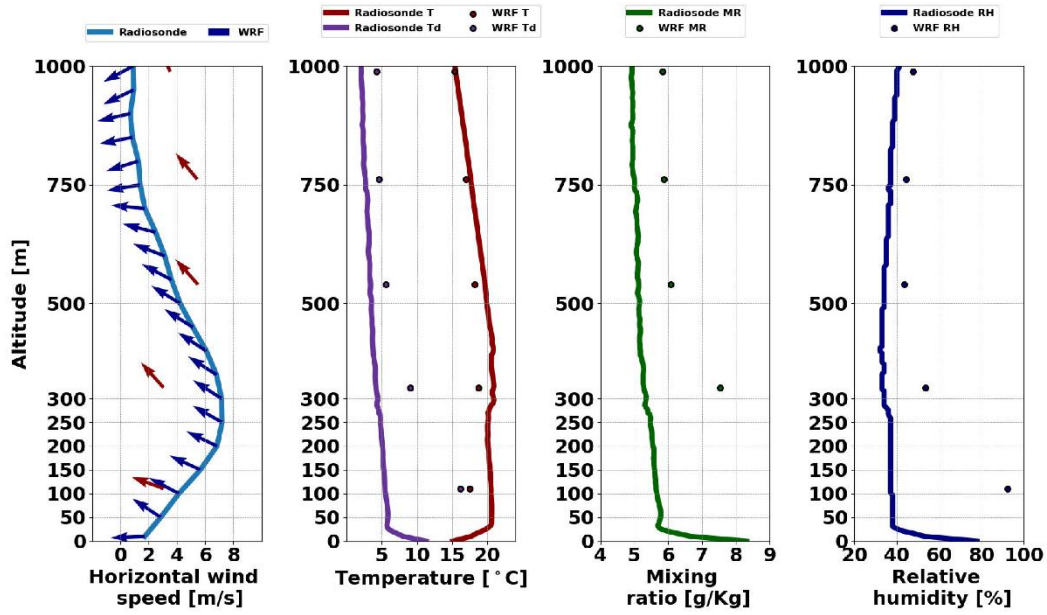


Figure 29. Vertical profiles of winds (arrows), temperature, dew point temperature, relative humidity, and mixing ratio of radiosonde on 6th of January 2021, 23 UTC. Single symbols along the profiles represent the WRF-RTFDDA forecast values at the available vertical levels.

Radiosonde : Beit dagan vs WRF , 07/01/21 23 UTC

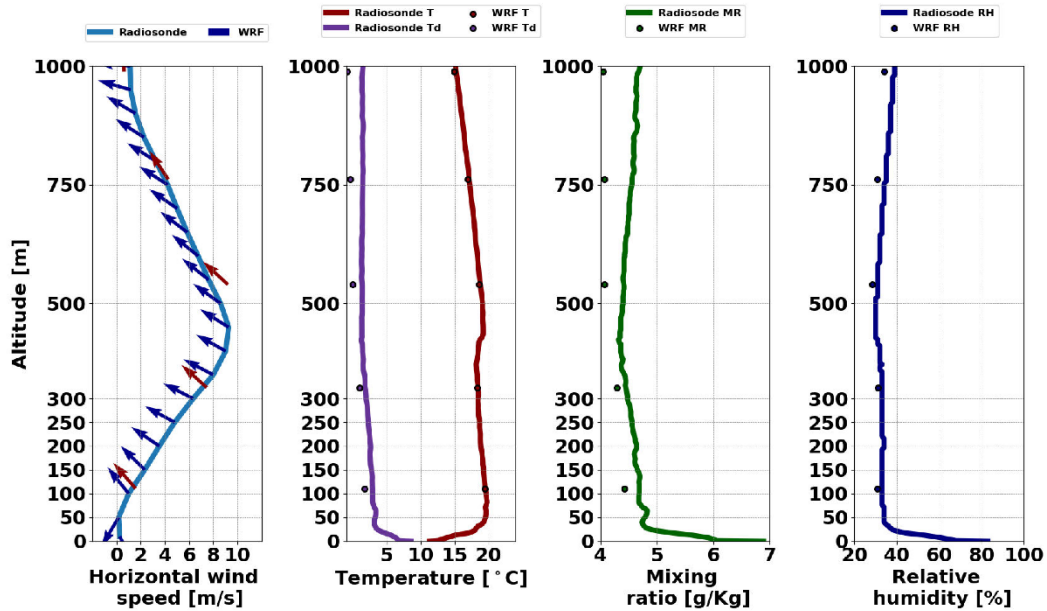


Figure 30. Vertical profiles of winds (arrows), temperature, dew point temperature, relative humidity, and mixing ratio of radiosonde on 7th of January 2021, 23 UTC. Single symbols along the profiles represent the WRF-RTFDDA forecast values at the available vertical levels.