

Martian Dust Storms Wind Load on Astronaut

Naseer Yari, PhD., P.E.

Affiliation, Wentworth Institute of Technology

Abstract:

The reality of living on Mars is closer than ever before. For years science fiction writers and movie producers have presumed powerful Martian dust storms capable of catastrophic events. In the movie, *The Martian* (2015), a powerful dust storm rips an antenna off its base and in the movie *Martian Land* (2015), an astronaut is blown away and carried off by a dust storm. In reality, some of the dust storms are large enough to be visible by telescopes on earth. In this article, the force impact of a Martian dust storm is evaluated. Wind speed data from Viking 1 and Viking 2 Lander in 1976, the Phoenix Lander in 2008, Mars Curiosity Rover in 2011, InSight mission Lander in 2018, and Mars 2020 mission Perseverance Rover are used for this study. Modifying Bernoulli's Equation based on Martian atmospheric density to determine the wind velocity pressure in pounds per square foot. The stability of a male and female astronaut in an EVA(Extravehicular Activity) space suit is evaluated during the highest wind speed of a Martian dust storm.

Plain Language Summary

While watching the science fiction movie *Martian Land* (2015), an astronaut is blown away and carried off by a dust storm. I wondered if that's possible with Martian atmospheric low pressure and if so, what would be the minimum wind speed. This article explains the methods of wind speed measurement on earth and mars. The Martian wind velocity pressure is modified from Bernoulli's Law for Dynamic Pressure Equation. Both male and female astronauts in EVA (Extravehicular Activity) suits are evaluated for stability during Martian dust storms. For male astronauts to be blown away by Martian dust storms the wind speed must be greater than 342 mph.

Key words:

Martian dust storm, Mars Wind,

1. Introduction

Understanding the climate on Mars is essential to human colonization on the red planet. Since the 1960s, forty-eight spacecraft missions (including unsuccessful ones) have been launched, mostly by NASA. In 1965, Mariner 4 returned the first close-up images of the Martian surface. The next breakthroughs in the exploration of Mars were the Mariner 9 mission which returned

7329 images in 1971. In 1975, Viking 1 was the first spacecraft to orbit and land on Mars; the orbiter returned over 36,000 images and the lander returned the first image of Mars surface. From 1975 to 1996 there was a slowdown period for Mars exploration (Martínez et al. 2017). 1996 began a new era in the exploration of Mars, starting with the Mars Global Surveyor and Mars Pathfinder and continued with the 2007 Phoenix Mars Lander which returned over 25 gigabits of data from Mars's north polar region. From 2007 to present, other countries have joined the exploration. NASA's Mars InSight Lander and Mars 2020 Perseverance Rover have returned an enormous amount of data from the planet surface such as wind and marsquakes.

In addition to the three biggest space agencies, NASA in the US, Roscosmos in Russia, and the ESA in Europe there are a number of private space agencies and other countries planning unmanned Mars missions for the near future and more aspiring missions to put humans on Mars.

The desire to go to Mars has made the race to red planet crowded. On July 19, 2022 two new space companies in California, Relativity Space and Impulse Space, announced that they are teaming up to launch the first commercial mission to Mars in 2024, this will be years before the first potential trip by the more established SpaceX (Brelt Tingley, 2019).

Table 1 is the list of historically successful missions to Mars.

Historical Log of Successful Missions			
Launch Date	Name	Country	Details
1964	Mariner 4	US	Returned 21 images
1969	Mariner 6	US	Returned 126 image
1969	Mariner 7	US	Returned 75 image
1971	Mars 3 Orbiter/Lander	USSR	Orbiter obtained approximately 8 months of data and lander landed safely, but only 20 seconds of data returned.
1971	Mariner 9	US	Returned 7,329 images
1973	Mars 5	USSR	Returned 60 images; only lasted 9 days
1973	Mars 6 Orbiter/Lander	USSR	Occultation experiment produced data and Lander failure on descent
1975	Viking 1 Orbiter/Lander	US	Orbiter returned over 36,000 images; lander returned first image from the surface of Mars and conducted soil experiments
1975	Viking 2 Orbiter/Lander	US	Returned 16,000 images and extensive atmospheric data and soil experiments
1996	Mars Global Surveyor	US	Mapped Mars and its topography; studied indications of Mars' wetter past
1996	Mars Pathfinder	US	Technology experiment lasting 5 times longer than warranty

2001	Mars Odyssey	US	High resolution images of Mars
2003	Mars Express Orbiter/Beagle 2 Lander	ESA	Orbiter imaging Mars in detail; lander appears to have landed intact but didn't communicate with Earth
2003	Mars Exploration Rover - Spirit	US	Operated for over 6 years on Mars, long past design life
2003	Mars Exploration Rover - Opportunity	US	Operated for nearly 15 years, roving a record 28 miles (45 km)
2005	Mars Reconnaissance Orbiter	US	Studying Mars in detail; has returned over 400 terabits of data (more than all other Mars missions combined)
2007	Phoenix Mars Lander	US	Returned more than 25 gigabits of data from its studies of Mars' north polar region
2011	Mars Science Laboratory	US	Exploring Mars' habitability
2011	Phobos-Grunt/Yinghuo-1	Russia/China	Stranded in Earth orbit
2013	Mars Atmosphere and Volatile Evolution	US	Studying the Martian atmosphere
2013	Mars Orbiter Mission (MOM)	India	Develop interplanetary technologies and explore Mars' surface features, mineralogy, and atmosphere
2016	ExoMars Orbiter/Schiaparelli EDL Demo Lander	ESA/Russia	Orbiter studying Martian atmosphere and EDL demo lander lost on arrival
2018	Mars InSight Lander	US	Measuring "marsquakes" and studying the planet's interior
2020	Hope Orbiter	UAE	Studying the Martian atmosphere
2020	Tianwen-1 Orbiter/Zhurong Rover	China	Orbiter arrived in Feb. 2021; released lander for successful touchdown and rover deployment in May 2021
2020	Mars 2020 Perseverance Rover	US	Searching for signs of ancient life and collecting samples for future return to Earth

Table 1 Historical Successful Missions to Mars. Reconfigured from NASA website.

1.1 Wind Speed Measurement on Earth

Wind velocity is used in determining the maximum design wind loads that can be expected on a building or structure during its lifespan. (Fanella 2018). On earth, wind speed is the result of three forces; 1) The pressure gradient force (Pgf) which is the outcome of uneven heating of the Earth's surface creating different pressure in the atmosphere by moving from high-pressure to low-pressure regions, 2) Coriolis force which is caused by planet rotation and 3) Surface Friction. (NOAA, 2023)

The equipment used to measure wind is known as anemometers and can record wind direction, speed, and the strength of gusts. Wind direction is measured relative to true north (not magnetic north). Wind speed normally increases with height above the earth's surface and is much influenced by the roughness of the ground and the presence of buildings, trees, and other obstacles in the vicinity. Planetary Boundary Layer is the layer of the earth's atmosphere which is located from the surface of the earth to approximately 3,300 feet above the surface. This layer has an important impact on the magnitude of wind loads on buildings and other structures. Wind speed naturally changes dramatically with time. The peaks in wind speed are called gusts, and these effects must be considered in design. Gust-effect factors are used in ASCE/SEI 7 to account for this phenomenon.

Here on earth, wind speed is routinely measured by a cup anemometer consisting of three or four cups, conical or hemispherical in shape, mounted symmetrically about a vertical spindle. The wind blowing into the cups causes the spindle to rotate. The design of the cups is such that the rate of rotation is proportional to the speed of the wind to a sufficiently close approximation. Anemometers are calibrated in a wind tunnel to find any variations in the connection between spindle rotation and wind speed specified by the manufacturer. Wind direction is measured by a vane containing a thin horizontal arm carrying a vertical flat plate at one end with its edge to the wind and at the other end a balance weight which also serves as a pointer. The anemometer and wind vane are each attached to a horizontal supporting arm located 33 feet above the ground in open terrain. The normal unit of wind speed is the knot (nautical mile per hour = 0.51 m/ sec = 1.15 mph).

In extreme weather conditions, to prevent damage to the instrument, a sonic anemometer is typically used. The instrument measures the speed of acoustic signals transmitted between two transducers located at the end of thin arms.

The hot-wire anemometer is another method to measure wind speed. This device uses a very fine wire electrically heated to a certain temperature above the ambience. Air flowing through the wire has a cooling effect on the wire. As the electrical resistance of most metals is dependent upon the temperature of the metal, a relationship can be obtained between the resistance of the wire and the flow speed.

1.2 Wind Speed Measurement on Mars

Unlike on earth, there is very limited wind speed data pertaining to the surface of Mars. Additional measurement of surface winds is essential since a single instrument in a given location is insufficient for representation of the entire planet (Viúdez-Moreiras et al., 2019a).

The measurements of Mars' near-surface atmospheric properties (Martínez et al. 2017) were from Viking 1, Viking 2, Phoenix Lander, Pathfinder, and Curiosity. Mars Science Laboratory (MSL) meteorological measurements included surface pressure, atmospheric temperature, relative humidity, atmospheric opacity, wind speed, and direction.

The Viking Lander meteorology instruments were designed to record atmospheric pressure, temperature, and wind speed. The wind velocity detector consists of a pair of hot film anemometers mounted on a boom 5.25 feet (1.6 meters) above the surface to escape lander heat

sources which could interfere with the wind flow, Figure 1. The speed and direction of the wind normal to each wire was specified from the power depletion required to hold the sensor at 100 C above the ambient atmosphere (Haslach, H. 1989).



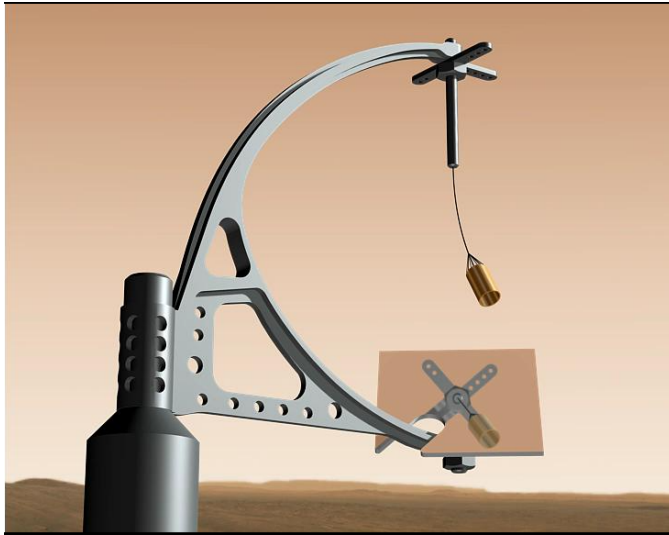
Figure 1: Replica of a Viking Lander. The wind and air temperature sensors can be seen on the end of the boom at right. Photo from NASA's Mars Exploration

Viking 1 landed on Mars in the western slope Chryse Planitia on June 11, 1976. The surface weather report for the first 350 sols of pressure, temperature, wind speed, and direction based on hourly average are available on NASA's website (NASA Planetary Data System the maximum wind speed by Viking 1 recorded was 58 mph(25.9 m/s) with a temperature of -80.8 F (62.66 C) and atmospheric pressure of 0.114 psi (790 Pa) on sol 214 (Soureshjani,et al 2023).

Viking 2 landed on Mars west of the Mie Crater in Utopia Planitia on September 3, 1976 and operated for 1281 sols. Midlatitude baroclinic waves produced by the strong thermal contrasts around the northern seasonal polar cap's edge, created wind speeds to peak during northern fall and winter in both VL2 years. The maximum wind speed was at 52 mph (23.3 m/s) during first sol year ((Martínez et al. 2017). The second Viking 2-year data showed a drop in wind speed in the middle of the fall/winter period. This is known as the solstice pause when the sun appears to reach its most northerly or southerly excursion relative to the celestial equator on the celestial sphere (e.g.,Lewis et al. 2016).

The Phoenix lander landed May 25, 2008, on the Mars polar region and operated for 157 sols after its last communication in November 2008, when its solar panels ceased operating in the

123 dark Martian winter. The wind speeds and directions were recorded by the Phoenix Lander
124 Telltale instrument, Figure 2. The Telltale is a joint Canadian/Danish instrument invented by the
125 University of Alberta scientist Carlos Lange which provides a rough estimate of wind speed and
126 direction. The speed is based on the amount of deflection from vertical that is observed, while
127 the wind direction is provided by which way this deflection moves. The maximum wind speed
128 was 37 mph (16.7 m/s).



130
131 Figure 2: NASA's Phoenix Mars Lander Credit: NASA/JPL-Caltech/University of
132 Arizona/Aarhus University/Niels Bohr Institute/Texas A&M University

133
134 Mars Curiosity Rover was launched from Cape Canaveral on November 26, 2011, and landed on
135 Aeolis Palus inside Gale crater on August 6, 2012. The rover is still operating, as of July 28,
136 2023, Curiosity has been active on Mars for 3900 sols. The Rover Environmental Monitoring
137 Station (REMS) has been designed to record six atmospheric parameters: wind speed/direction,
138 pressure, relative humidity, air temperature, ground temperature, and ultraviolet radiation
139 (Newman et al. 2017). All sensors are located around three elements: two booms attached to the
140 Rover's Remote Sensing Mast. Findings from the Curiosity Rover measurements on Mars dust
141 storms, cloud movements, and wind streaks suggest that there are wind speeds up to 62 mph
142 (ASU).

143
144 NASA's InSight (Interior Exploration using Seismic Investigations, Geodesy, and Heat
145 Transport) mission lander launched on May 5, 2018, and landed on Mars on November 26, 2018
146 on Elysium Planitia, located in the Elysium and Aeolis quadrangles (Day 2019). Temperature
147 and winds for InSight (TWINS), Figure 3, is a NASA meteorological suite of instruments.
148 TWINS provides continuous wind and air temperature measurements to help understand the
149 seismic data from the SEIS instrument (Velasco et al, 2015). InSight is equipped with two very
150 sensitive sensors detecting wind vibrations, air pressure, and a seismometer on the robotic arm.
151 This is similar to the meteorological package on the Curiosity Rover (Rover Environmental
152 Monitoring Station) REMS (Gómez-Elvira et al. 2014). The seismometer records vibrations

caused by the wind moving over the spacecraft's solar panels, which are each 7 feet (2.2 meters) in diameter. The maximum wind speed recorded by TWINS is 62 mph, similar to the Curiosity Rover measurements.

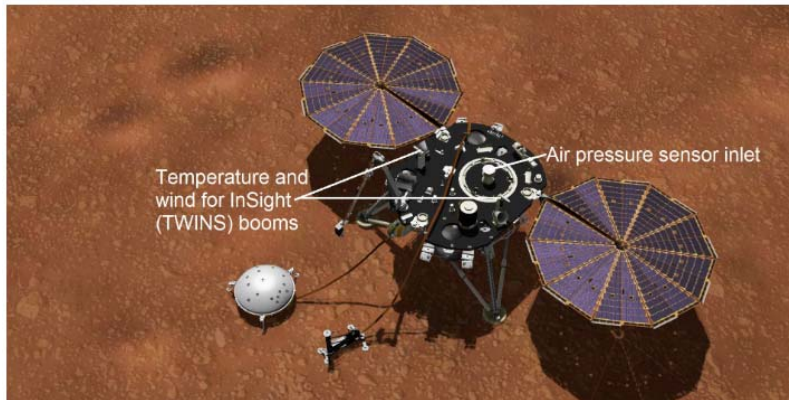


Figure 3 InSight's TWINS Instrument Credit NASA/JPL-Caltech

Mars 2020 mission Perseverance Rover is designed to explore the Jezero Crater on Mars. It was launched on July 30, 2020, and landed on Mars on February 18, 2021, (As of 27 July 2023, Perseverance has been active on Mars for 865 sol (Overbye, 21). The Perseverance Rover has a MEDA (Mars Environmental Dynamics Analyzer) which is designed to record six atmospheric parameters: wind speed/direction, pressure, relative humidity, air temperature, ground temperature, radiation, and dust optical properties. Attached to the Remote Sensing Mast (RSM), two wind sensors (WS) measure wind speed and direction. Wind Sensor 1 is 2 inches by 6.7 inches (5 by 17 centimeters). Wind Sensor 2 is 2 by 15.75 inches (5 by 40 centimeters), Fig. 1A. The combination of the 6 boards per boom provides wind speed, as well as pitch and yaw angle of each boom relative to the flow direction. The specification on horizontal wind speed has a 4.5 mph(2 m/sec) accuracy with speed limit up to 89.5 mph(40 m/sec)and the vertical wind, limit up to 22.3 mph (10 m/se) with the same accuracy (NASA). The wind speed recorded ranges from 0 to 45 mph (0 to 20 m/s) at the Jezero landing site (Viudez et al, 2022).

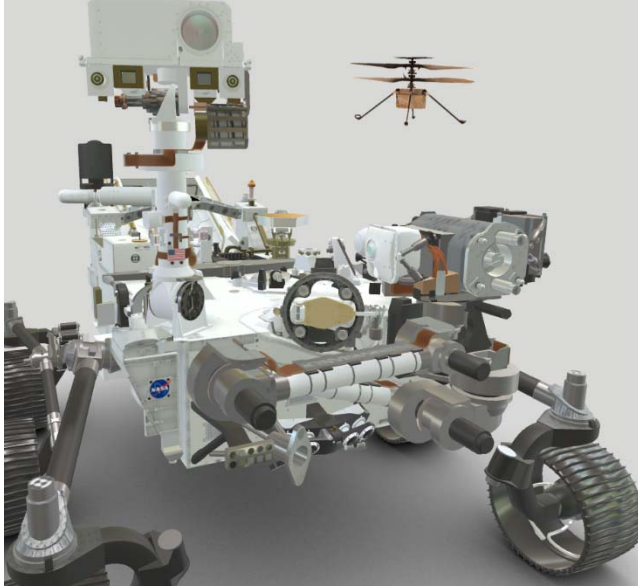


Figure 4 Mars 2020 Mission Perseverance Rover Credit NASA/JPL-Caltech

2. Wind Load

The surface of Mars exerts a horizontal drag force on wind, which impedes its flow. The more frictional resistance is applied, the closer the wind flow is to the surface; therefore, wind velocity is smaller at or near the ground level compared to levels above the surface. Correspondingly, at a given height above the surface, wind velocity is smaller over rougher surfaces compared to smoother ones due to friction. On earth, the basic wind speed is established at three-second gust speed at 33 ft (10 m) above the ground in open terrain (Section 1.1). However, on Mars the wind instrument is placed at an average distance of 5 feet above the ground. From the Mars 2020 Perseverance Rover to the Viking 1 Lander (Section 1.2), the maximum Martian wind speed is about 62 mph which is considered for this study.

When wind encounters a structure or object, two different types of pressures are created: external pressures, which act on all exterior surfaces, and internal pressures which act on all interior surfaces. Internal pressures are due to leakage of air through the exterior surface to the interior space. However, in this study, only external pressure is evaluated since the pressure suit is completely sealed.

Wind pressure is directly proportional to the square of wind velocity using Bernoulli's Law for Dynamic Pressure Equation.

$$P = \frac{1}{2} \rho V^2 \quad (1)$$

ρ is the atmospheric air density and V is the wind velocity

Several methods are used for calculating wind load on an object or a structure. American Society of Civil Engineers (ASCE 7) has the one of the most detailed methods of calculating wind load on a structure defined within five chapters which has been adopted by many other organizations around the world. On earth, the velocity pressure q_z at height z above the ground

198 surface is determined by ASCE Equation 27.3-1 ASCE/SEI 7-22 (American Society of Civil
199 Engineers).

$$200 \quad q_z = 0.00256 K_z K_{zt} K_d K_e V^2 \quad (2)$$

201 Where:

202 K_d = wind directionality factor-- This factor is for the statistical nature of wind flow and the
203 probability of the maximum effects happening at any specific time for any given wind direction.

204 K_z = velocity pressure exposure coefficient-- This factor modifies the velocity pressure with
205 respect to exposure and height above ground.

206 K_{zt} = topographic factor--This factor modifies the velocity pressure exposure coefficients
207 for structures located on the upper half of an isolated hill or escarpment.

208 K_e = ground elevation factor--This factor adjusts the velocity pressure, q_z , based on the reduced
209 mass density of air at elevations above sea level.

210 V = basic wind speed

211 q_z = velocity pressure

212 This is basically Bernoulli's Equation, and it converts the basic wind speed V to a velocity
213 pressure based on the mass density of air for the standard atmosphere, which is defined at the
214 temperature of 59°F and a sea level pressure of 29.92 inches of mercury (0.0765 lb/cf). The
215 constant 0.00256 in ASCE equation is computed using Bernoulli's Law for Dynamic Pressure,
216 which is equal to one-half times the density of air times the velocity squared, where the velocity
217 is in miles per hour and the pressure is in pounds per square foot:

$$218 \quad \text{Constant} = 0.5 \times [(0.0765 \text{ lb/ft}^3) / (32.147 \text{ ft/S}^2)] \times (1 \text{ mi/hr} \times 5280 \text{ ft/mi} \times 1 \text{ hr/3600 sec})^2 = 0.00256$$

220 Where: 0.0765 lb/ft³ is the density of the air and 32.147 ft/S² is the gravitational accelerations of
221 earth.

222 The velocity pressure equation can be modified for the Martian atmospheric condition.

223 Mars gravitational accelerations = 12.23 ft/S². However, the Martian atmospheric density shows
224 more daily and seasonal variation; the average is 0.00124 lb/ft³ (0.020 kg/m³).

$$225 \quad \text{Constant} = 0.5 \times (0.00124 \text{ lb/ft}^3) / (12.23 \text{ ft/S}^2) \times (1 \text{ mi/hr} \times 5280 \text{ ft/mi} \times 1 \text{ hr/3600 sec})^2 = 0.000108$$

226 Therefore, the velocity pressure in pounds per square foot on Mars is given by

$$227 \quad q = 0.000108 V^2 \quad (3)$$

228

229 On earth, assuming all velocity pressure coefficient equal to 1 (open terrain and worst-case
230 scenario) the earth velocity pressure would be

231 $q_z = 0.00256V^2$ (4)

232 From the previous section, the maximum wind speed on Mars is around 62-mph at 5 feet above
233 the ground.

234 $q(Mars) = 0.000108(62)^2 = 0.415 \text{ psf}$ (5)

235 $q(Earth) = 0.00256(62)^2 = 9.84 \text{ psf}$ (6)

236 At this wind speed and elevation on earth, the velocity pressure would be equal to 9.84 pounds
237 per square foot while on Mars it would have a pressure of 0.415 pounds per square foot. Here on
238 earth, the wind velocity pressure of 0.415 psf (pounds per square foot) would result from 12.7
239 mph wind speed. To put this in perspective, if a human was standing on the surface of Mars, the
240 62-mph wind would feel more like a light breeze than a tropical storm.

241 Next section evaluates the impact of wind velocity pressure on humans in a Mars suit in a
242 Martian dust storm.

243

244 **Pressure**

245 The Martian atmospheric pressure shows more daily and seasonal variation with elevation, but
246 there is not enough pressure to sustain life without a pressure suit. The lowest pressure the
247 human body can tolerate, known as the Armstrong Limit, is at 0.91 psi. Water boils (vaporizes)
248 at the temperature of a human body (98.6 F). The average surface pressure on Mars is 0.088 psi
249 and the highest pressure, at the lowest surface elevation, at the bottom of Hellas Basin, is 0.180
250 psi (Freudenrich et al, 2023). Current space suits are pressurized to 4.3 psi. This is below the
251 usual atmospheric pressure on Earth (14.7 psi at sea level). Higher pressure in the suit creates
252 resistance for every movement which can be physically exhausting during long activities.
253 However, a lower pressurized environment allows astronauts to move around with better
254 mobility (Hsu on July 17, 2009).

255 A number of space organizations including NASA, Axiom Space, and Collins Aerospace are
256 designing a new space suit for Mars and the Moon (O'Callaghan, 2022). The existing
257 Extravehicular Mobility Unit (EMU) space suit which is used on the International Space Station
258 (ISS) is too bulky and rigid for the Mars surface. The new suit will be designed for walking
259 including an abrasion resistance against high-speed winds filled with abrasive Mars dust, low
260 temperatures, radiation, and micrometeorite strikes. It will also have better mobility than its
261 predecessor.

262 NASA has performed many experiments aimed at understanding the physiological and
263 biomechanical effects of space suits under numerous different conditions (Sridhar et al. 2017).
264 The first use of EVA space suit was in 1960 by Alexei Leonov and there have been many
265 developments by United States, Russia, and recently by private industries. Russia's current EVA
266 suit Sokol pressure suit was first worn by Soviet cosmonauts in 1973 and the current US suit is
267 the Extravehicular Mobility Unit (EMU) which provides environmental protection, mobility, life
268 support, and communications for astronauts performing extravehicular activity (EVA). NASA

has conducted a test on EVA suit's alignment and the system's center of gravity (CG), and the difference between the system CG and the human CG. (Sridhar et al. 2017). The composite CG will be used in this study to examine the horizontal wind load on the occupied EVA suit and its stability during a Martian dust storm.

For wind load determination, wind must be assumed to come from any horizontal direction, eight wind directions are shown in Figure 5. Four that are perpendicular to the main axes of the space suit and four that are at 45-degree angles to the main axes.

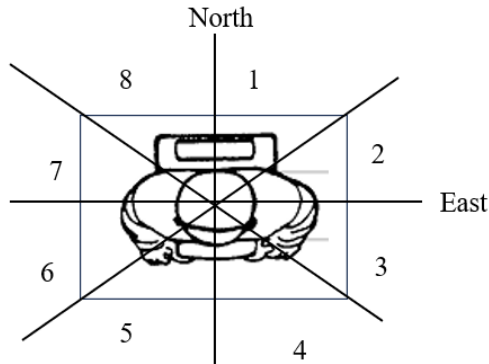


Figure 5: Wind Directions

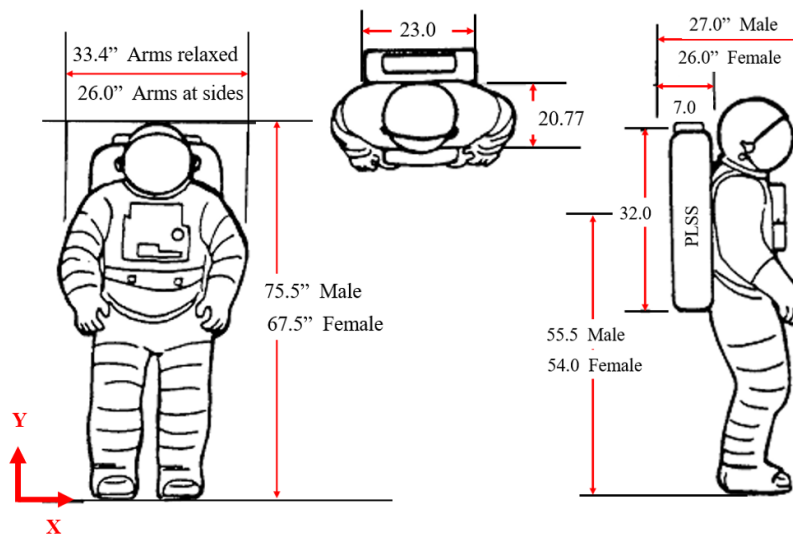


Figure 6: EVA(Extravehicular Activity) Suit Position Reconfigured from NASA's MAN-Systems Integration Standards Volume 1, Section 14.

The forces generated from wind velocity pressure are a function of the shape and size of the object. Naturally, large transverse surfaces generate a larger pressure force due to the Bernoulli Effect. The highest surface area of the space suit is the function of position and wind direction on the suit. The front and back would generate the highest surface area. Figure 6 shows the dimensions of the EVA suit.

EVA suit						
	Earth	Mars	Male		Female	
Gravity	100%	37.90%	Y	wy	Y	wy
Suit(lb)	78	29.56	42.28	1249.88	37.80	1117.44
PLSS(lb)	93	35.25	55.50	1956.21	54.00	1903.34
OPS(lb)	41	15.54	56.50	877.95	55.00	854.65
Astronaut(lb)M	180	68.22	39.20	2674.22		
Astronaut(lb)F	120	45.48			35.00	1591.80
Total Male	392	148.57		6758.27		
Total Female	332	125.83				5467.23

Table 2 Combined Space Suit and Astronaut CG Measurements.

To determine the effect of wind on the EVA suit, the composite Center of Gravity (CG) and the Centroids of the EVA suit should be computed. The center of gravity (c.g.) of an erect person with arms at the side is at approximately 56% of the person's height measured from the soles of the feet (Davidovits, 2019). Table 2 is based on Figure 6 assuming a male astronaut at 5 feet 10 inches 180 pounds and female astronaut at 5 feet 2 inches 120 pounds. In general, astronauts should weigh between 110 and 209 pounds and height should be no more than 5 feet 11 inches (National Aeronautics and Space Administration).

The location of the center of gravity in Y direction is given by:

$$Y_M = \frac{\sum wy}{W} = \frac{6758.27}{148.57} = 45.5 \text{ inch} \quad (7)$$

$$Y_F = \frac{\sum wy}{W} = \frac{5467.23}{125.83} = 43.4 \text{ inch} \quad (8)$$

The CG for a male astronaut is 45.5 inches and female astronaut is 43.45 inches from the soles of the feet. This is well above the natural human CG. A male astronaut's natural CG is 6.3 inches and a female astronaut's natural CG is 8.4 inches below composite CG of the EVA suit. The location of the center of gravity of an object affects its stability. The lower the center of gravity (CG) is, the more stable the object. However, the higher it is, the more likely the object is to tip over if it is pushed. The high CG of EVA suit may cause an issue during a Martian windstorm.

The EVA suit centroid is computed based on Figure 7 with an approximate front surface area of 1881 inch square (Table 3). The front and back side of the suit has maximum surface area.

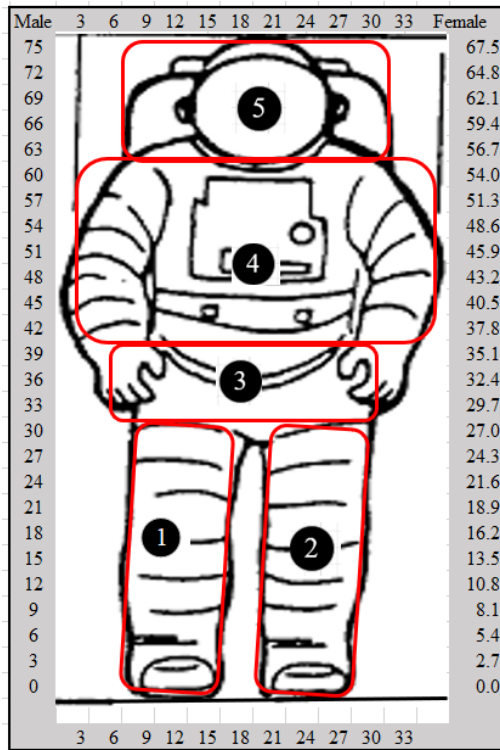


Figure 7: EVA(Extravehicular Activity) Suit Front Position Reconfigured from NASA's MAN-Systems Integration Standards Volume 1 Section 14.

	Male			Female		
Component	Area(in^2)	Y (in)	AY	Area	Y	AY
1	320	16	5120	270	13.5	3645.0
2	320	16	5120	270	13.5	3645.0
3	195	36	7020	186.3	32.2	5998.9
4	701.4	51	35771.4	628.4	44.2	27775.3
5	345	69	23805	310.5	62.1	19282.1
Total	1881.4		76836.4	1665.2		60346.2

Table 3 Surface Areas of Front Position and Y Distances Measured from the Reference Axes.

$$Y_{CM} = \frac{\sum Ay}{\sum A} = \frac{76836.4}{1881.4} = 40.8 \text{ inch} \quad (9)$$

$$Y_{cf} = \frac{\sum Ay}{\sum A} = \frac{60346.2}{1665.2} = 36.2 \text{ inch} \quad (10)$$

Center of gravity is the point where the total weight of the body acts while centroid is the geometric center of the shape. When an object has a perfectly uniform density these two centers are exactly the same. However, when additional weight is added to the object, in this case

PLSS(Portable Life Support System) and OPS (Oxygen Purge System), the two centers can be at different locations, as shown in Figure 9.

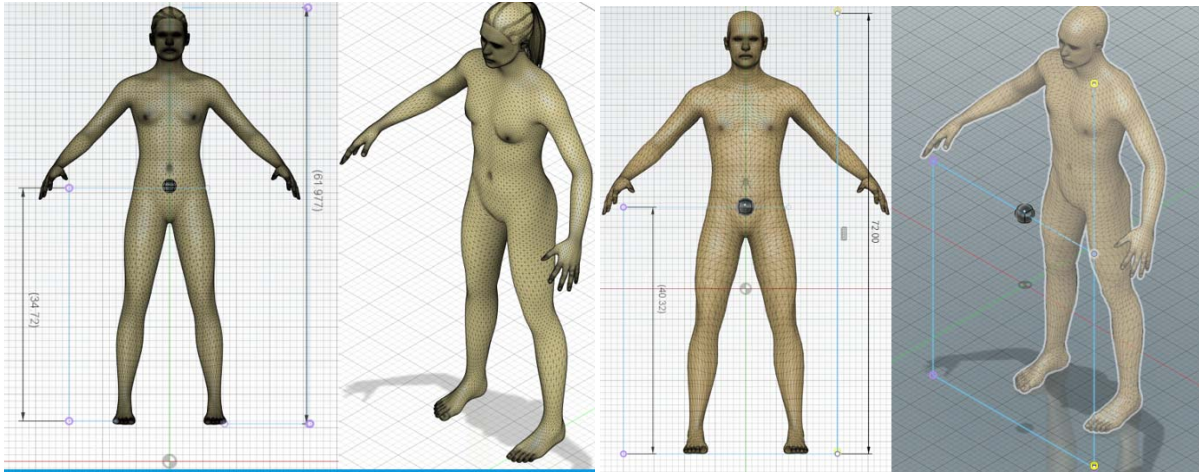


Figure 8: : 3 D Model of Male and Female Astronaut in Autodesk Fusion 360.

Modeling 3 D in Autodesk Fusion 360, Figure 8, female astronaut at 62 inches tall with CG at 34.72 and male astronaut at 72 inches tall with CG at 40.32 inches from the soles of the feet.

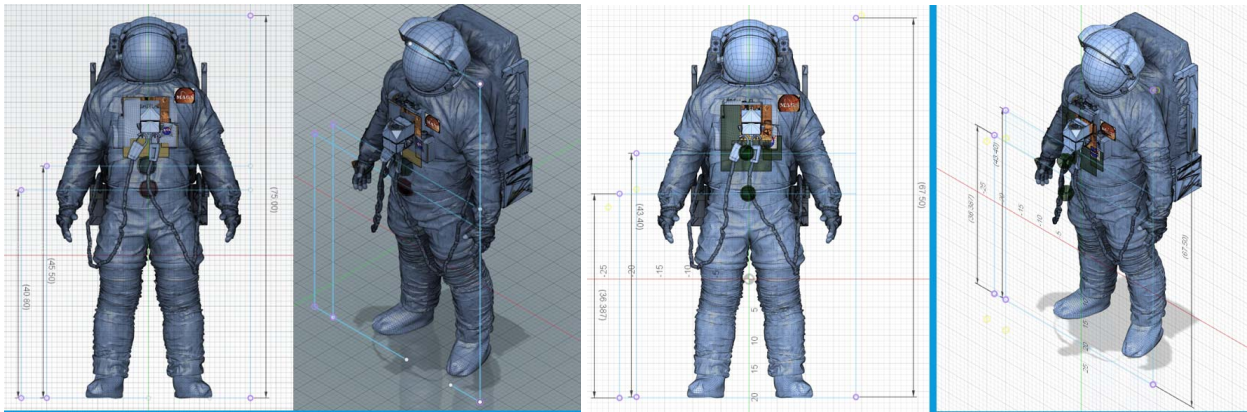


Figure 9: 3 D Model of Male and Female Astronaut in EVA Suit in Autodesk Fusion 360

The overturning moment and sliding of the stability of the astronauts due to the wind load is determined by:

For male astronauts from Table 1 computation (7) and Figure 9:

The overturning moment of the base of the feet due to astronaut weight is

$$Moment = (148.57lb) \times (45.5 \text{ inch}) = 6760 \text{ in} - lb \quad (11)$$

From computation (5) for 62 mph wind on Mars with the velocity pressure of 0.415 psf will produce an overturning moment of

$$M = \left(\frac{0.415}{144} \right) (1881.4)(40.8) = 221.2 \text{ in} - \text{lb} \quad (12)$$

Which is far less than moment due to the male astronaut's weight. To determine the overturning wind velocity, the following equation will be used (Figure 10)

$$R = qSC_d \quad (13)$$

R= resulting force acting on centroid of EVA suit in pound force

q= velocity pressure in pounds per square foot

S = EVA surface area

C_d = drag coefficient (unitless) assuming C_d=1

Overturning moment due to the wind on EVA is given by

$$M = RC \quad (14)$$

C = distance from the bottom of the feet to the centroid of the EVA in inches

From equation 3 and 13

$$M = 0.000108V^2SC \quad (15)$$

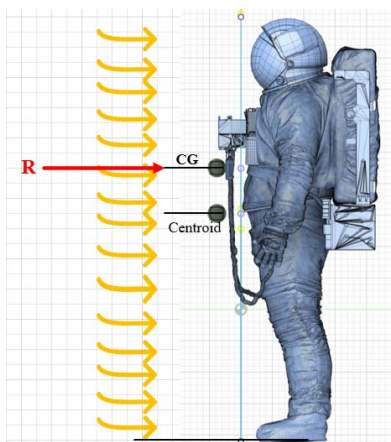
Setting M equal to 6760 in-lbs, results in the wind speed of 342 mph. Consequently, for male astronaut to be blown away by Martian dust storms the wind speed has to be greater than 342 mph.

or greater to move the

$$6760 = 0.000108V^2(1881.4)(40.8) \quad (15)$$

$$q = \frac{\frac{6760}{\frac{40.8}{\frac{1881.4}{144}}}}{144} = 12.68 \text{ psf} \quad (16)$$

$$V = \sqrt{\frac{12.68}{0.000108}} = 342 \text{ mph} \quad (17)$$



357

Figure 10: Wind Pressure of Front Surface of the EVA Suit

Similarly for female astronauts, the overturning wind velocity is 347.6 mph.

$$Moment = (125.83lb)x(43.4 inch) = 5461in - lb$$

$$M = \left(\frac{0.415}{144}\right)(1665.2)(36.2) = 173.7 in - lb$$

$$5461 = 0.000108V^2(1665.2)(36.2)$$

$$q = \frac{\frac{5461}{36.2}}{\frac{1665.2}{144}} = 13.05 psf$$

$$V = \sqrt{\frac{13.05}{0.000108}} = 347.6 mph$$

Conclusion

We have seen in science fiction movies in which the astronaut is blown away and carried by a Martian dust storm. In this article, the wind velocity pressure on a male and female astronaut is evaluated. On earth, the equipment used to measure wind is known as anemometers and can record wind speed, direction, and the strength of gusts. The anemometer and wind vane are each attached to a horizontal supporting arm located 33 feet above the ground in open terrain. Since wind varies rapidly over very short periods of time, it is sampled at high frequency (every 0.25 sec) to capture the intensity of gusts, or short-lived peaks in speed, which cause the greatest damage during a storm. The gust speed and direction are defined by the maximum three second average wind speed occurring in any period. ASCE/SEI 7 provide basic wind speeds based on 3-second gusts at 33 feet above ground for Exposure C which is "Open terrain with scattered obstructions including surface undulations or other irregularities having height generally less than 30 feet extending more than 1500 feet from the building site in any quadrant."(ASCE/SEI 7) However, on Mars the wind speed measurement device like hot film anemometers or a Telltale instrument which are mounted on a boom an average distance of 5 feet above the surface. Based on data from NASA's landers, the highest wind speeds are correlated to global dust storms with speeds up to 62 mph. From NASA's MAN-Systems Integration Standards Volume 1, Section 14 the dimensions for a EVA(Extravehicular Activity) space suit is used to determine the center of gravity and centroid of the EVA. Bernoulli's Equation was modified based on Martian atmospheric density to determine velocity pressure in pounds per square foot (Equation 3). Contrary to science fiction movies, the maximum wind speed on Mars (62 mph) would feel more like a light breeze than a tropical storm. The wind speed must be in excess of 342 mph for a male astronaut and 348 mph for a female astronaut to cause instability.

Further data is needed to measure and evaluate available wind more accurately, predict and measure wind speed, wind direction, and ambient turbulence. Placing wind speed measurement instruments similar to earth across large portions of the Mars' surface will provide valuable data that could be used for Wind energy.

Open Research

The data that support the finding of this study is publicly available in NASA's MAN-Systems Integration Standards Volume 1, Section 14.. <https://msis.jsc.nasa.gov/sections/section14.htm>

References

American Society of Civil Engineers., 2017. Minimum design loads and associated criteria for buildings and other structures. American Society of Civil Engineers.

NASA Science Mars Exploration.

1. David A. Fanella (2018). Structural Load Determination: 2018 and 2021 IBC and ASCE/SEI 7-16 McGraw-Hill

2. Martínez, G. M., Newman, C. N., De Vicente-Retortillo, A., Fischer, E., Renno, N. O., Richardson, M. I., ... & Vasavada, A. R. (2017). The modern near-surface Martian climate: a review of in-situ meteorological data from Viking to Curiosity. Space Science Reviews, 212, 295-338.

3. NOAA (2023, June 12)National Oceanic and Atmospheric Administration (<https://www.weather.gov/jetstream/wind#:~:text=Wind%20is%20simply%20air%20in,the%20west%20at%20that%20speed>),

4. ASU Mars Education ([https://marsed.asu.edu/mep/wind#:~:text=Scientists%20have%20made%20only%20a,per%20hour%20\(62%20mph\)](https://marsed.asu.edu/mep/wind#:~:text=Scientists%20have%20made%20only%20a,per%20hour%20(62%20mph)))

5. Choi,Q (2022, December 22). Wind farms on Mars could power future astronaut bases. <https://www.space.com/mars-wind-power-support-red-planet-missions>

6. Haslach, H. (1989). Wind energy- A resource for a human mission to Mars. British Interplanetary Society, Journal, 42, 171-178.

7. NASA. Mars 2020 mission Perseverance Rover. <https://mars.nasa.gov/mars2020/spacecraft/instruments/meda/for-scientists/#:~:text=MEDA%20is%20a%20suite%20of,IR%20ranges%20of%20the%20spectrum>.

8. Hartwick, V. L., Toon, O. B., Lundquist, J. K., Pierpaoli, O. A., & Kahre, M. A. (2023). Assessment of wind energy resource potential for future human missions to Mars. Nature Astronomy, 7(3), 298-308.

419 9. Schorbach, V., & Weiland, T. (2022). Wind as a back-up energy source for mars missions.
420 Acta Astronautica, 191, 472-478.

421 10. Day, M., & Rebolledo, L. (2019). Intermittency in wind-driven surface alteration on Mars
422 interpreted from wind streaks and measurements by InSight. Geophysical Research Letters,
423 46(22), 12747-12755.

424 11. Gómez-Elvira, J., Armiens, C., Carrasco, I., Genzer, M., Gómez, F., Haberle, R., ... &
425 Zorzano, M. P. (2014). Curiosity's rover environmental monitoring station: Overview of the first
426 100 sols. Journal of Geophysical Research: Planets, 119(7), 1680-1688.

427 12. Viúdez-Moreiras, D., Newman, C. E., De la Torre, M., Martínez, G., Guzewich, S., Lemmon,
428 M., ... & Gómez-Elvira, J. (2019). Effects of the MY34/2018 global dust storm as measured by
429 MSL REMS in Gale crater. Journal of Geophysical Research: Planets, 124(7), 1899-1912.

430 13. NASA Planetary Data System
431 https://atmos.nmsu.edu/data_and_services/atmospheres_data/MARS/viking/surface_met.html

432 14. Hess, S. L., Henry, R. M., Leovy, C. B., Ryan, J. A., & Tillman, J. E. (1977). Meteorological
433 results from the surface of Mars: Viking 1 and 2. Journal of Geophysical Research, 82(28), 4559-
434 4574.

435 15. Soureshjani, O. K., Massumi, A., & Nouri, G. (2023). Martian buildings: Design loading.
436 Advances in Space Research, 71(5), 2186-2205.

437 16. Lewis, S. R., Mulholland, D. P., Read, P. L., Montabone, L., Wilson, R. J., & Smith, M. D.
438 (2016). The solsticial pause on Mars: 1. A planetary wave reanalysis. Icarus, 264, 456-464.

439 17. Newman, C. E., Gómez-Elvira, J., Marin, M., Navarro, S., Torres, J., Richardson, M. I., ... &
440 Bridges, N. T. (2017). Winds measured by the Rover Environmental Monitoring Station (REMS)
441 during the Mars Science Laboratory (MSL) rover's Bagnold Dunes Campaign and comparison
442 with numerical modeling using MarsWRF. Icarus, 291, 203-231.

443 18. Velasco, T., & Rodríguez-Manfredi, J. A. (2015, April). The TWINS instrument on board
444 Mars InSight mission. In EGU General Assembly Conference Abstracts (p. 2571).

445 19. Overbye, Dennis (February 19, 2021). "Perseverance's Pictures From Mars Show NASA
446 Rover's New Home – Scientists working on the mission are eagerly scrutinizing the first images
447 sent back to Earth by the robotic explorer". The New York Times. Archived from the original on
448 February 19, 2021. Retrieved February 19, 2021.

449 20. Viúdez-Moreiras, D., de la Torre, M., Gómez-Elvira, J., Lorenz, R. D., Apestigue, V.,
450 Guzewich, S., ... & Bell, J. (2022). Winds at the Mars 2020 landing site. 2. Wind variability and
451 turbulence. Journal of Geophysical Research: Planets, 127(12), e2022JE007523.

452 21. Brett Tingley July 19, 2022. These 2 private companies aim to beat SpaceX to Mars with
453 2024 flight. Space.com. <https://www.space.com/relativity-space-private-mars-mission-launching-2024#:~:text=Two%20startup%20space%20companies%20in,plans%20to%20establish%20a%20human>

456 22. Craig Freudenrich, Ph.D., Nicholas Gerbis & Mark Mancini, June 23,2023. Exploring Mars:
457 Insights Into the Red Planet. <https://science.howstuffworks.com/mars.htm#pt5>

458 23. Jonathan O'Callaghan July 14, 2022. Astronauts Will Wear These Spacesuits on the Moon—
459 And Maybe Mars, Too. [https://www.scientificamerican.com/article/astronauts-will-wear-these-](https://www.scientificamerican.com/article/astronauts-will-wear-these-spacesuits-on-the-moon-mdash-and-maybe-mars-too/)
460 [spacesuits-on-the-moon-mdash-and-maybe-mars-too/](https://www.scientificamerican.com/article/astronauts-will-wear-these-spacesuits-on-the-moon-mdash-and-maybe-mars-too/)

461 24. Paul Davidovits, 2019. Physics in Biology and Medicine Fifth Edition.

462 25. Sridhar, S., Stetz, E., McFarland, S., & Schaffner, G. (2017, July). Space Suit and Portable
463 Life Support System Center of Gravity Influence on Astronaut Kinematics, Exertion and
464 Efficiency. 47th International Conference on Environmental Systems.

465 26. Jeremy Hsu on July 17, 2009. What Will NASA's Next Spacesuit Look Like?
466 [https://www.scientificamerican.com/article/spacesuits-moonwalk-](https://www.scientificamerican.com/article/spacesuits-moonwalk-apollo/#:~:text=Current%20spacesuits%20are%20pressurized%20to,allows%20astronauts%20to%20move%20around)
467 [apollo/#:~:text=Current%20spacesuits%20are%20pressurized%20to,allows%20astronauts%20to](https://www.scientificamerican.com/article/spacesuits-moonwalk-apollo/#:~:text=Current%20spacesuits%20are%20pressurized%20to,allows%20astronauts%20to%20move%20around)
468 [%20move%20around](https://www.scientificamerican.com/article/spacesuits-moonwalk-apollo/#:~:text=Current%20spacesuits%20are%20pressurized%20to,allows%20astronauts%20to%20move%20around)

469

470