

Supporting Information for "Predictability of the Barents Sea ice cover from the sea surface temperatures in a linear framework"

Aleksi Nummelin¹, Chuncheng Guo¹, and Patrik Bohlinger²

¹NORCE Norwegian Research Centre AS and Bjerknes Centre for Climate Research

²Norwegian Meteorological Institute

Contents of this file

1. Figures S1 to S2
2. Tables S1

Additional Supporting Information (Files uploaded separately)

1. Captions for large Table S1 (uploaded as separate excel file)

Introduction This supplementary material provides a more detailed view of individual model performance (Fig. S1) as well as multimodel mean response functions for all the months of the year (Fig. S2). We also provide response functions for three models with heat transport output (Fig. S3) as well as table S1 listing all the models used in the analysis.

Table S1. List of CMIP6 models and the links to the data on ESGF servers.

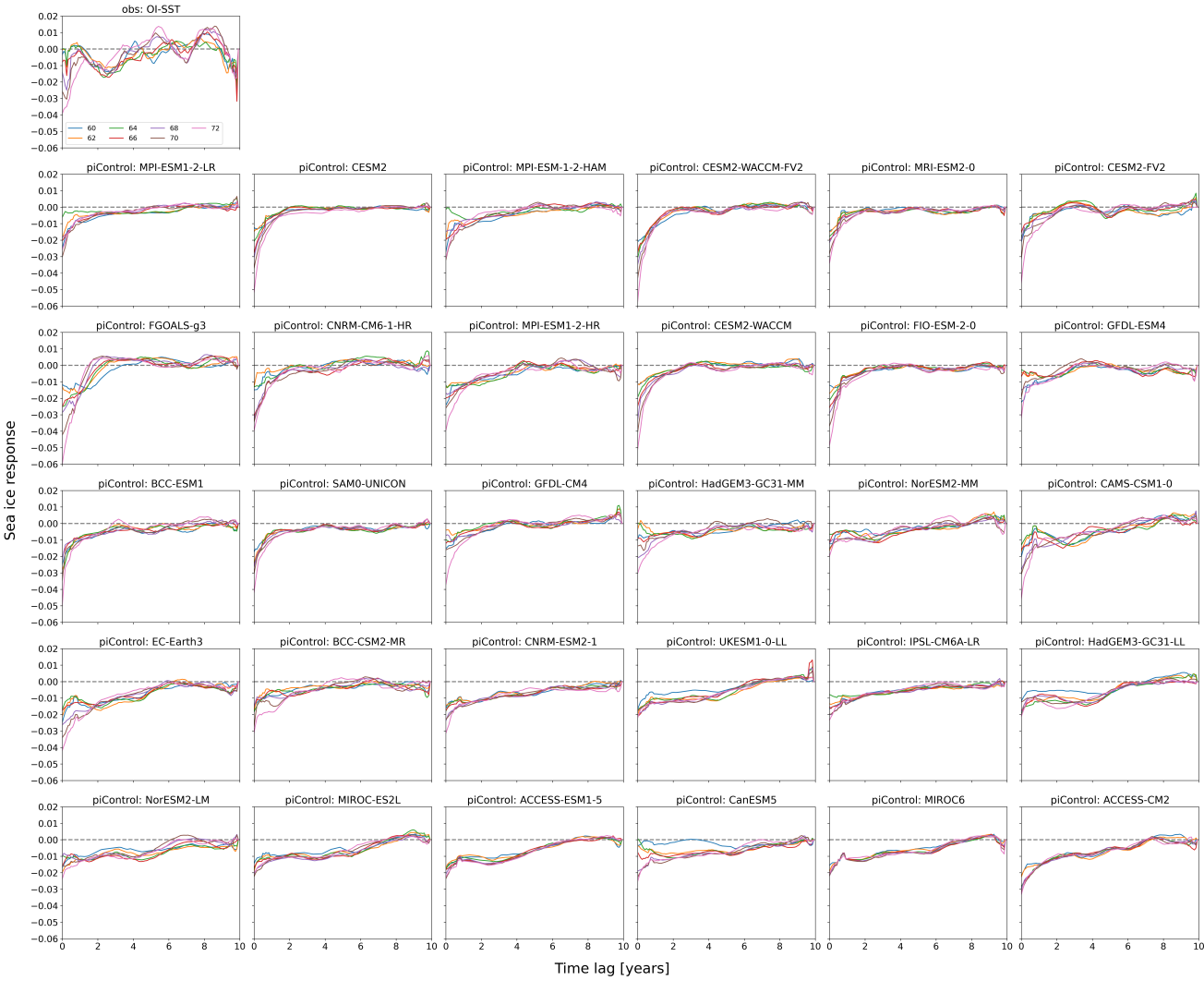


Figure S1. SST response functions for observations and for models (different panels) for different sections (different line colors).

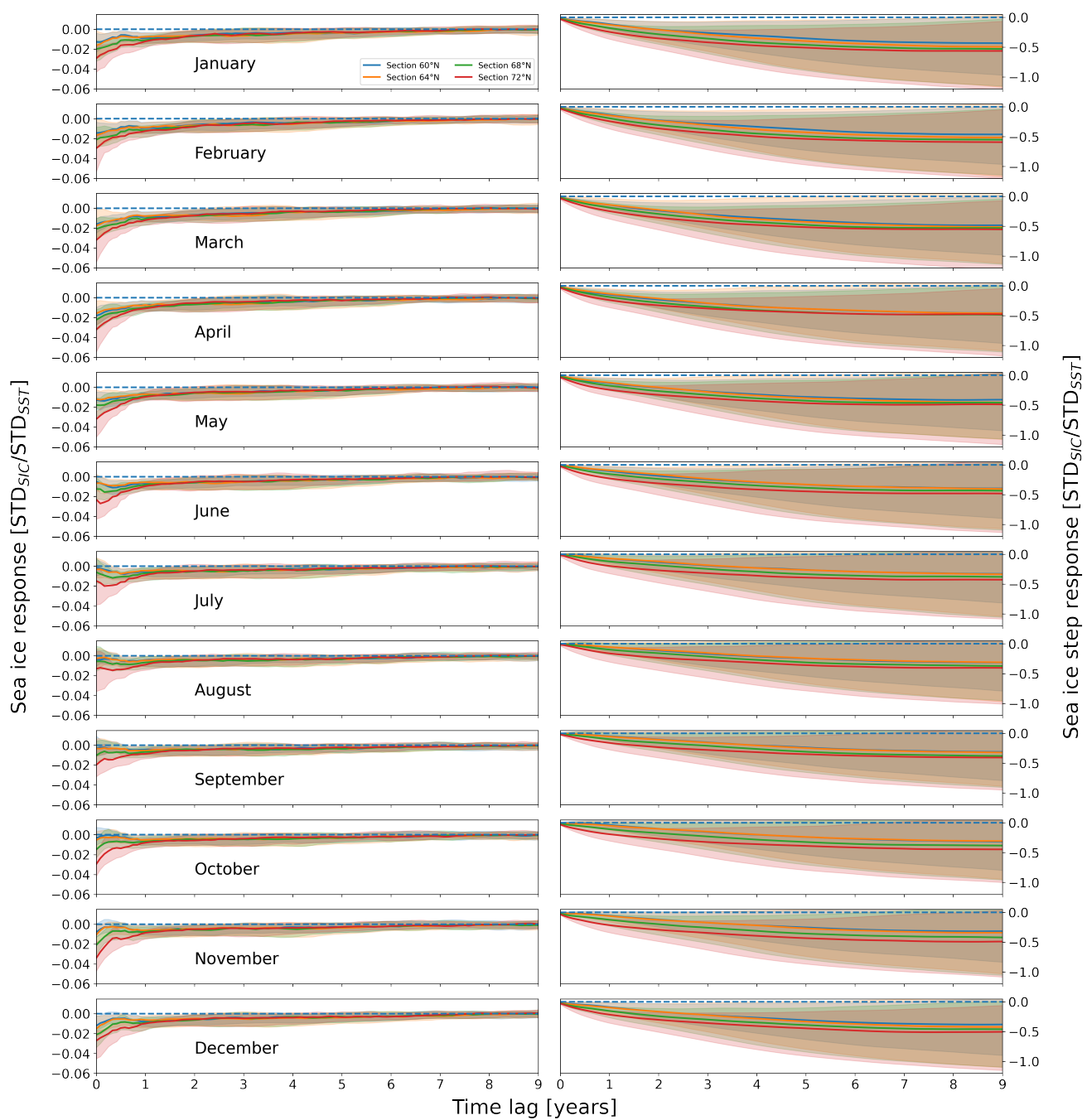


Figure S2. CMIP6 mean sea ice response function in different months, for four SST sections.

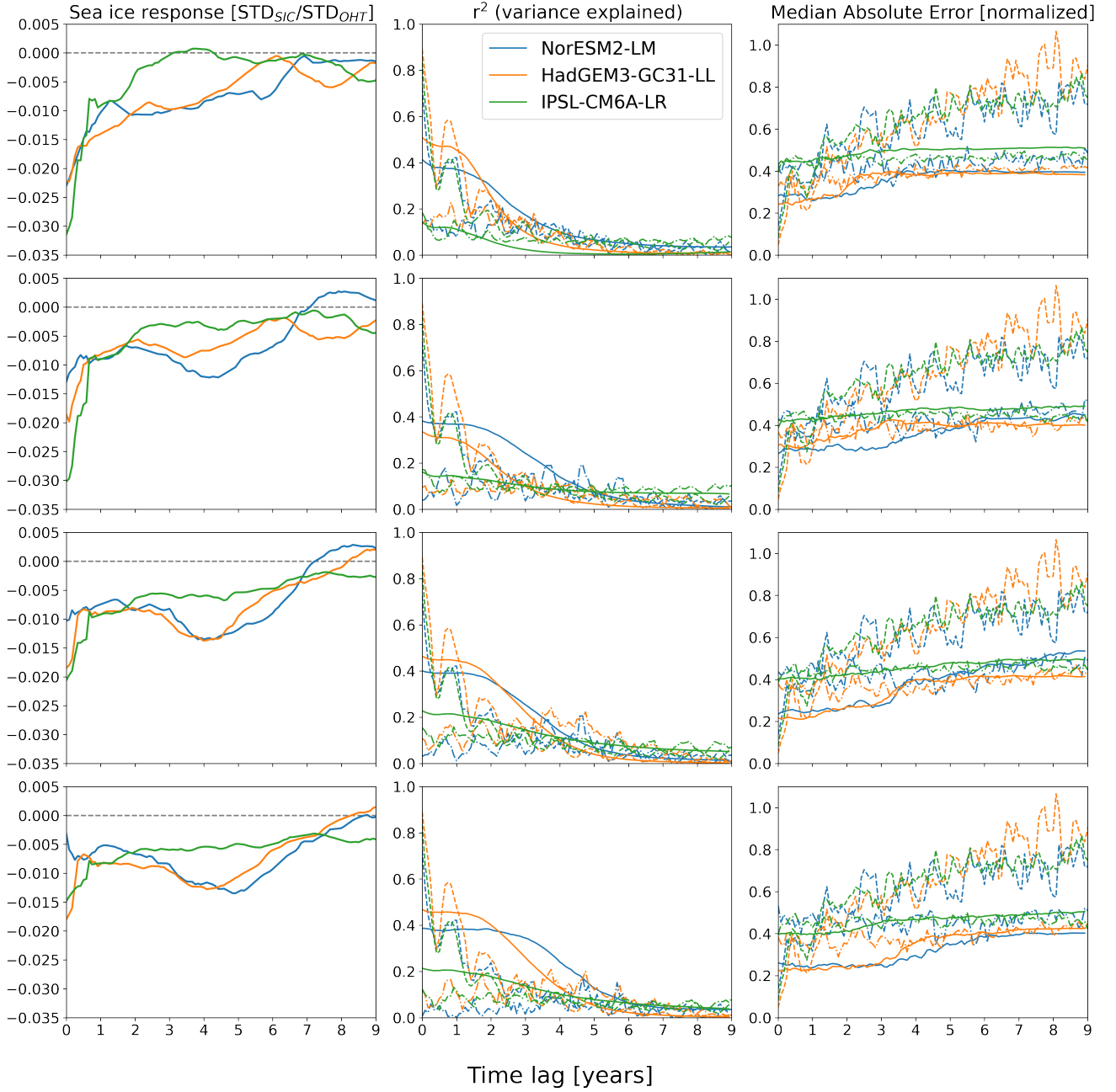


Figure S3. Sea ice response (first column), predictive skill in measured in correlation (second column), predictive skill in measured as mean error (third column). The rows are (from the top) as follows 72N, 68N, 64N, and 60N. The different colors mark the different models, and in the second and third column the different linestyles are as follows: solid line denotes $OHT_{GPR} \cdot G$, dashed-dotted line denotes $OHT_{Persistence} \cdot G$, dashed line denotes sea ice persistence.