

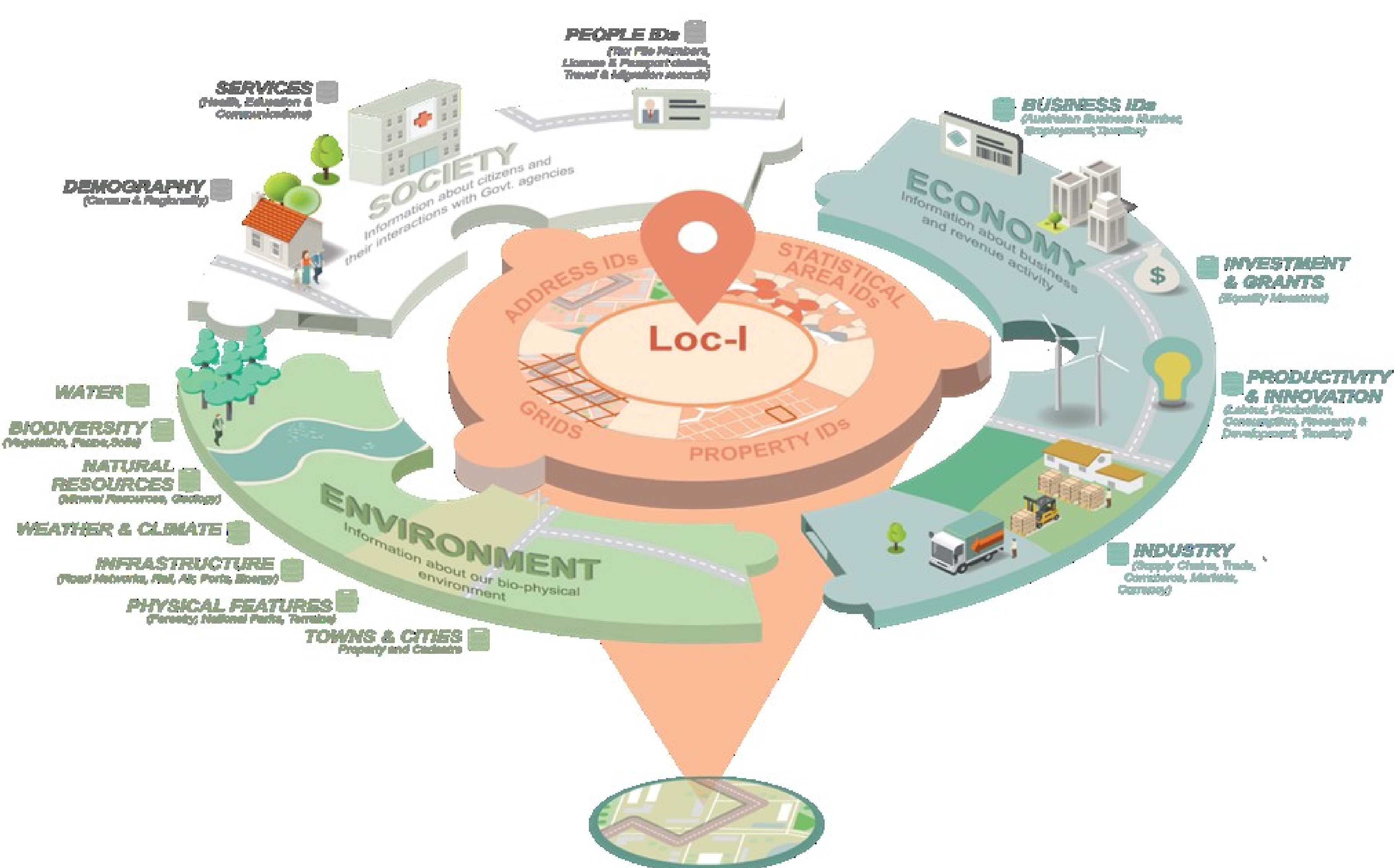
Building New Capabilities for Integrating Data on Earth, Space and Environment – Location Index Project



Everything happens at a place or location

In 2018, the Location Index (LOC-I) project was initiated as part of the Data Integration Partnership for Australia (DIPA) program aiming to build a framework that:

- supports critical government decision making;
- contributes significantly to economic, social and environmental sustainability
- integrates data on people, business, and the environment

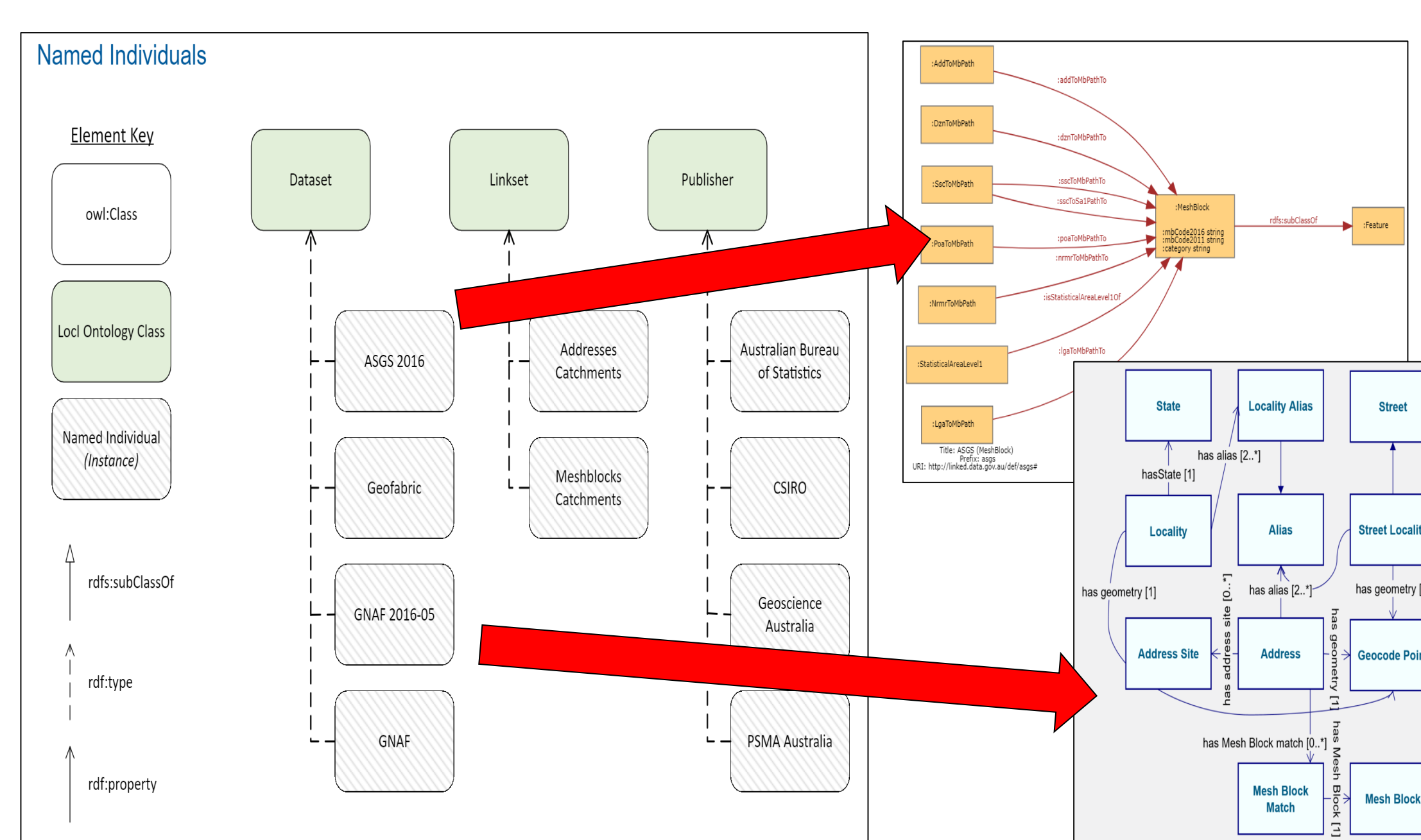


Building GIS without GIS

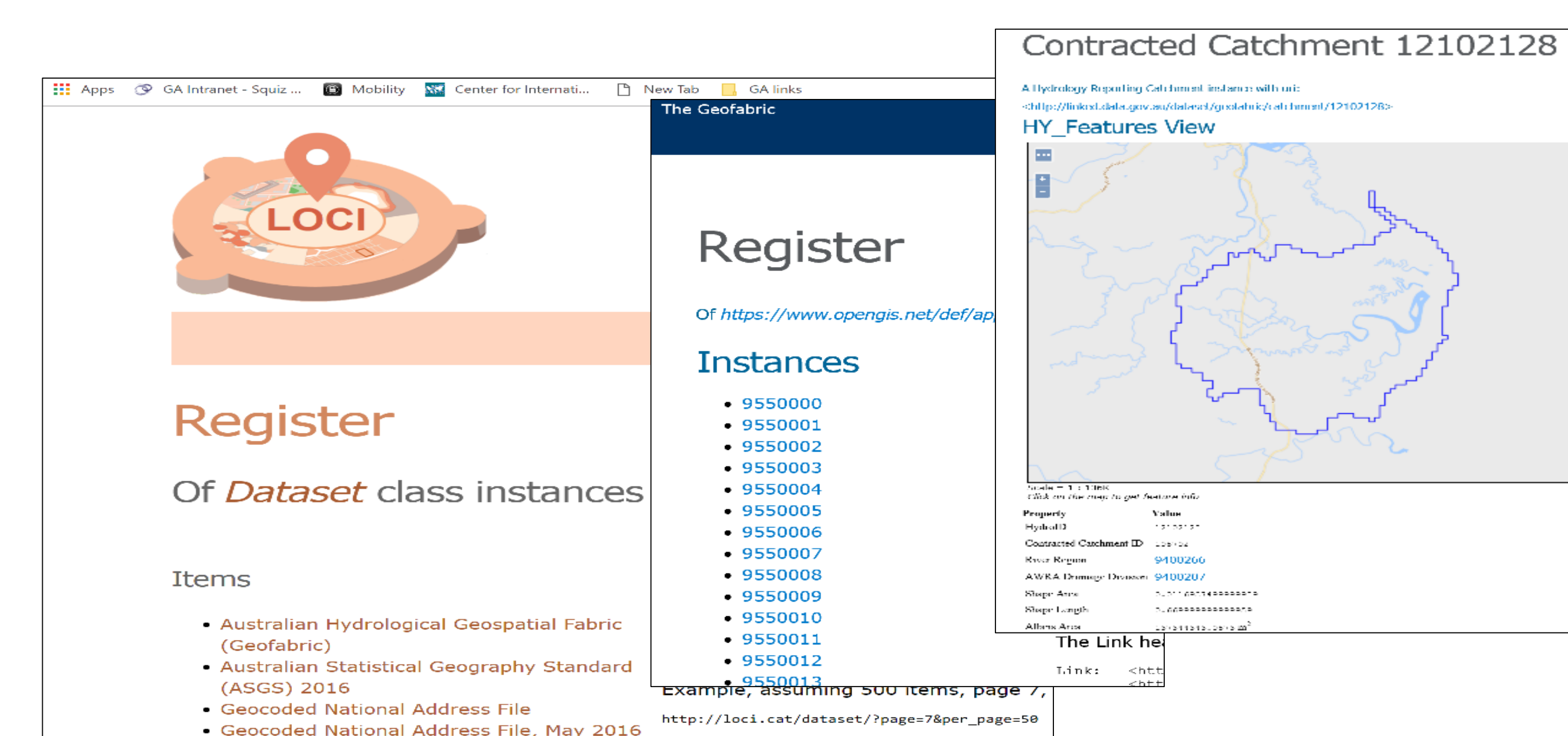
Semantic Integration of Linked Data

This GIS without GIS framework brings together modern technological approaches of Linked Data and Discrete Global Grid Systems (DGGS). The project also addresses important aspects of Social Architecture to ensure relevance, transparency, openness and accessibility of multidisciplinary data for the Australian Government and non-government users.

Relationships: ontologies & cross-walks



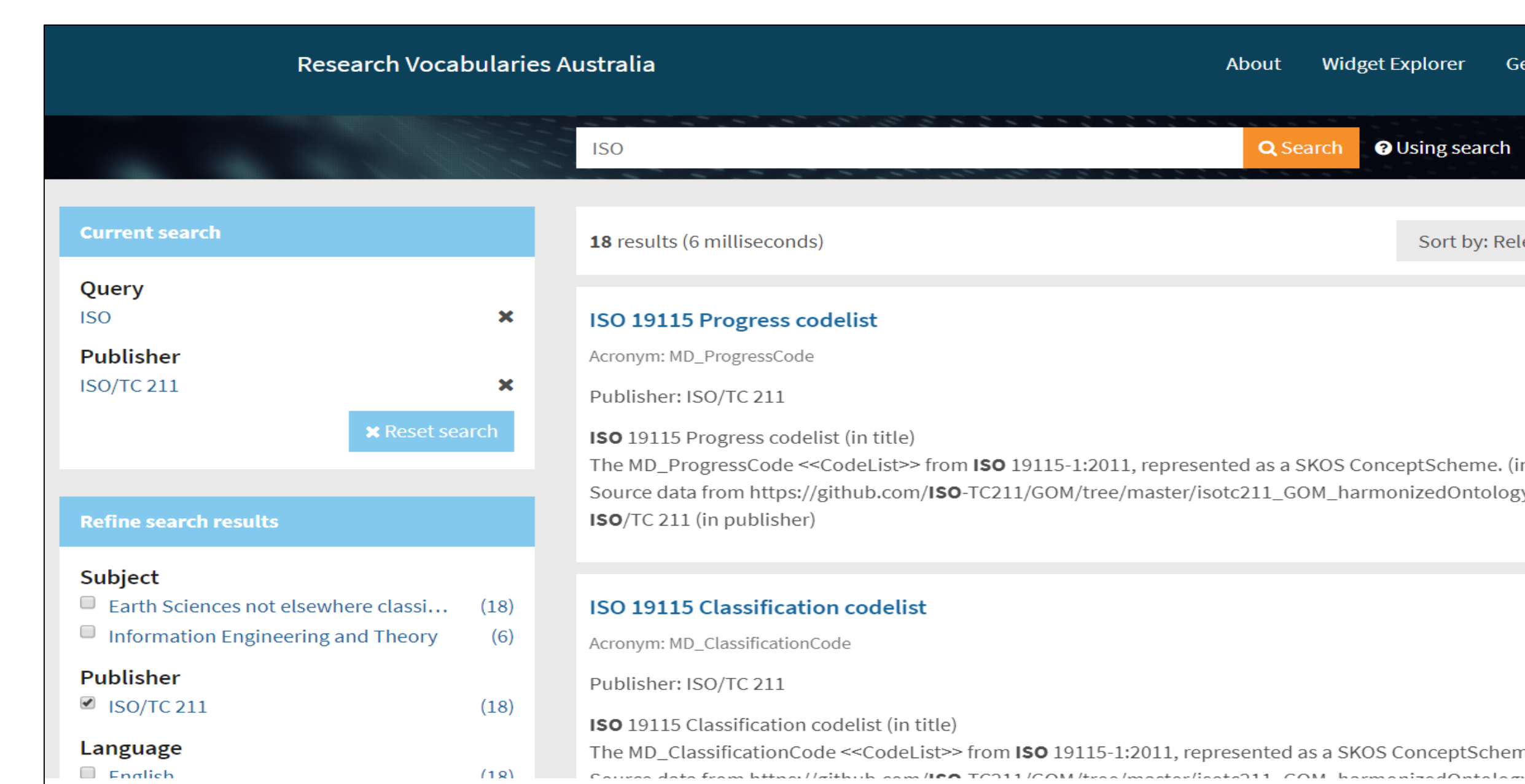
Access points: metadata based registries & landing pages



Pre-calculated indexes

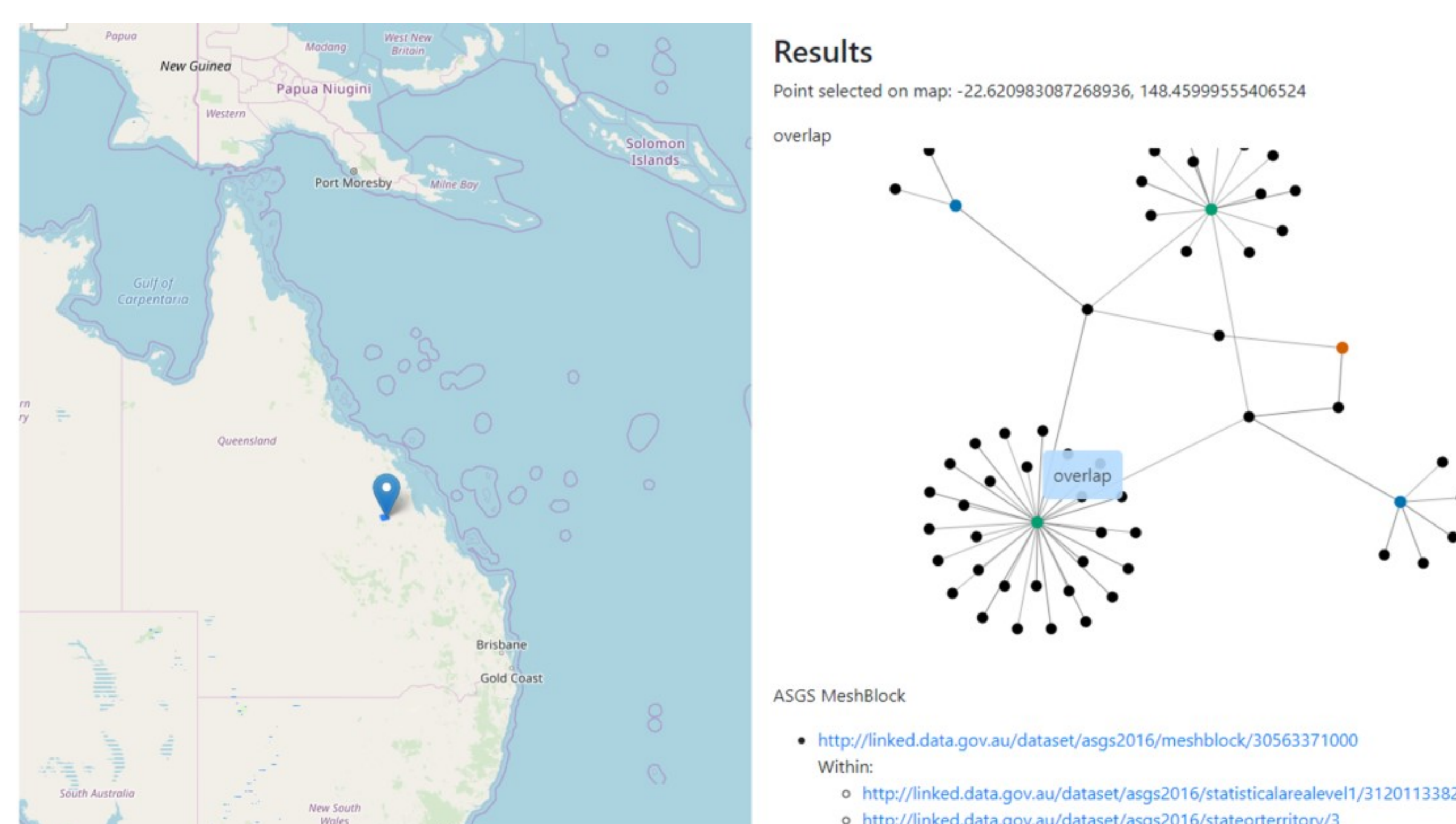
SA1 Identifier	Class	State	Within SA2
60203110013	asgs#StatisticalAreaLevel1	TAS	602031100
10805116808	asgs#StatisticalAreaLevel1	NSW	108051168
80108109107	asgs#StatisticalAreaLevel1	ACT	801081091
21205132729	asgs#StatisticalAreaLevel1	VIC	212051327
21203130129	asgs#StatisticalAreaLevel1	VIC	212031301
20803118838	asgs#StatisticalAreaLevel1	VIC	208031188

Integration: common classification & tags

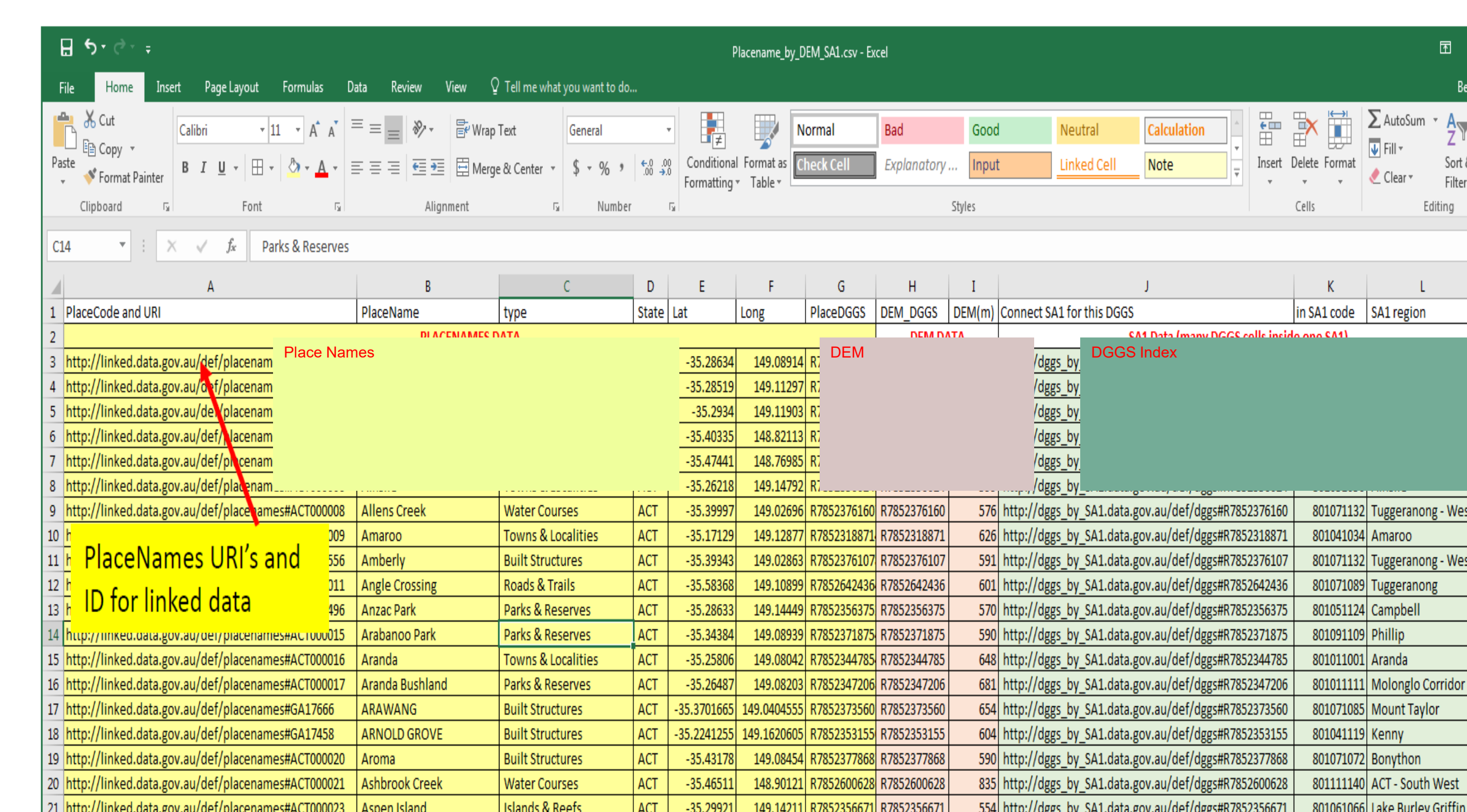


Capability to query across datasets – implementation examples

Linking through machine readable formats



Joining through Spatial Indexing



The Loc-I Objectives:

- stable, persistent and repeatable access to data
- standardised governance and transparency in data management
- increased interoperability
- enhanced information sharing
- reduced complexity and improve efficiency
- governed and managed federated supply chains

