



AGU 2018 PA23F-1035: Earth and Environment Science Information Partners: ESIP & E2SIP parallel pathways on opposite sides of the globe

Erin Robinson¹, Simon Cox², Adrian Burton³, Ben Evans⁴, Lesley Wyborn⁴, Tim Rawling⁵

¹Earth Science Information Partners (ESIP); ²CSIRO Land and Water; ³Australian Research Data Commons (ARDC); ⁴National Computational Infrastructure (NCI); ⁵AuScope Ltd

ABSTRACT

Over the last 20 years, the Earth Science Information Partners (ESIP) has built a community of practice in USA, supported by NASA, NOAA & USGS, through regular meetings and online forums to examine and develop emerging technologies.

ESIP has become a brain trust and professional home for the Earth science data and informatics community where both peer-led education & training and the co-development of conventions, practices and guidelines have helped make Earth science data more interoperable. Through connections in the ESIP network and these boundary objects, ESIP has influenced the international community.

The Australian Earth and Environment Science Information Partners (E2SIP) was recently established through liaison with ESIP to support similar functions in Australia. E2SIP is working with the National Earth and Environmental Sciences Facilities Forum which provides a common voice to government on behalf of long term science infrastructure. In addition, E2SIP, supported by programs from the National Research Infrastructure Strategy (NCRIS) such as the newly formed Australian Research Data Commons (ARDC), will convene workshops, courses, hackathons, and develop guidance and best practices tailored for the Australian community. This talk will explore how ESIP and E2SIP will work together, utilizing the collective impact framework orienting around a common shared agenda and leveraging a shared backbone structure in the U.S. and Australia. We will highlight our current understanding through a few case studies.

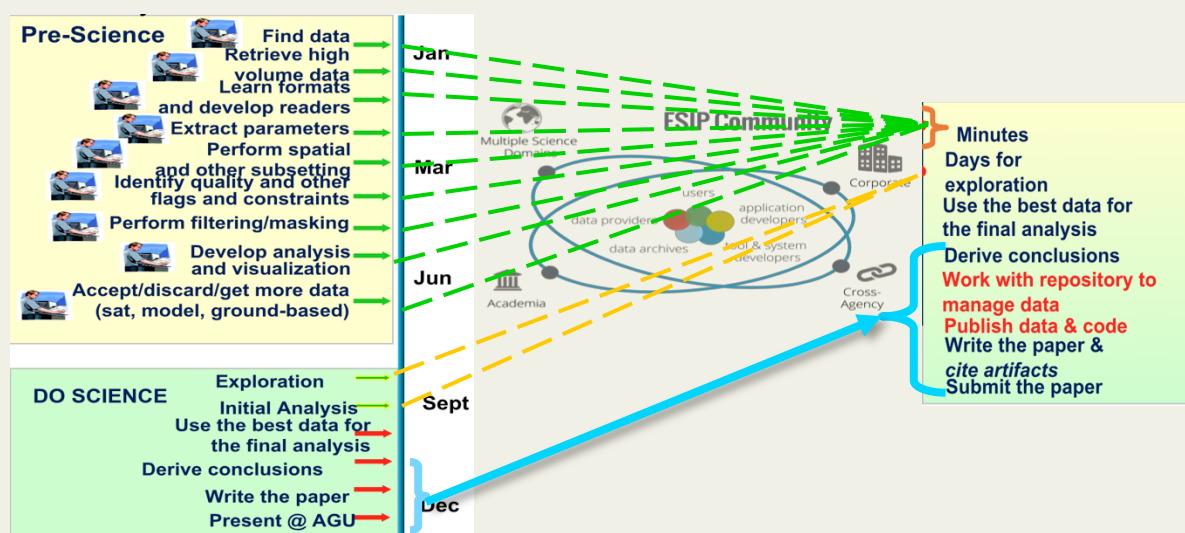
CONTACT

Erin Robinson
Earth Science Information Partners - ESIP
Email: erinrobinson@esipfed.org
Phone: 314-369-9954
Website: esipfed.org

INTRODUCTION

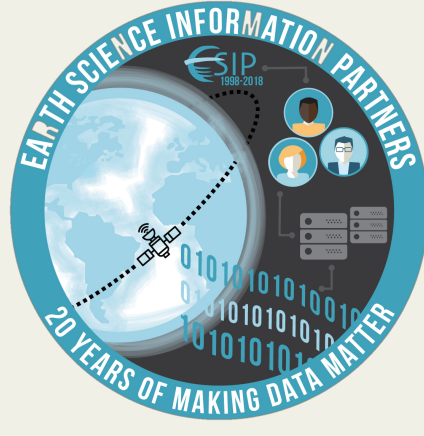
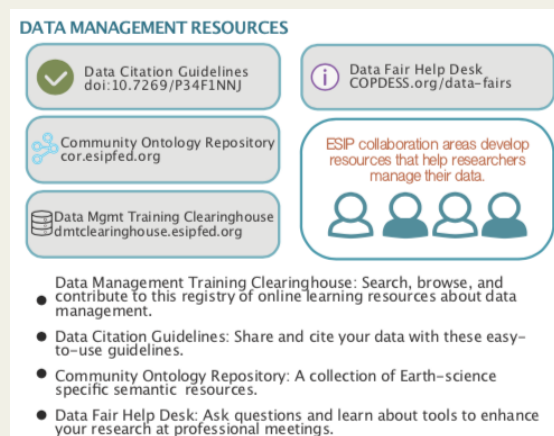
Addressing research problems in Earth and environmental science usually requires combining data from multiple sources. Often these challenges related to finding, accessing, interoperating and reusing data are common.

Over the last 20 years, communities of practice like the Earth Science Information Partners (ESIP) have accelerated through the use of common practices, vocabularies, interfaces and standards and recently it has been accelerated through connected communities of practice.



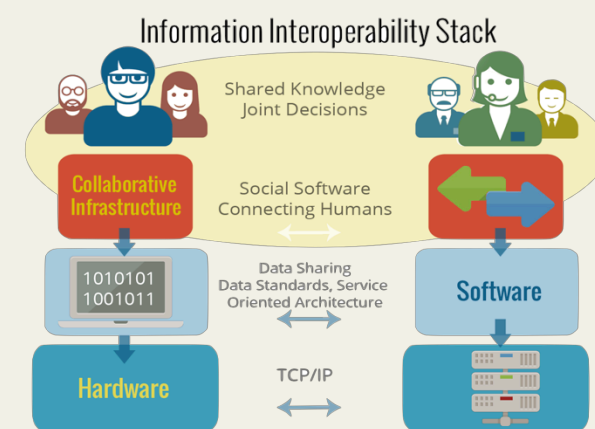
To be a leader in promoting the **collection, stewardship and (re)use** Of Earth science data, information and knowledge that is responsive to societal needs.

- Originally founded by NASA in 1998 (20 year history)
- Ongoing support from NASA, NOAA, USGS, Foundations
- Now 110+ organizational members
- Community management backbone organization
- Annual meetings - 2x a year at ESIP, AGU, AMS, ...
- Some federal grants to researchers tied to ESIP participation



COMMUNITY APPROACH

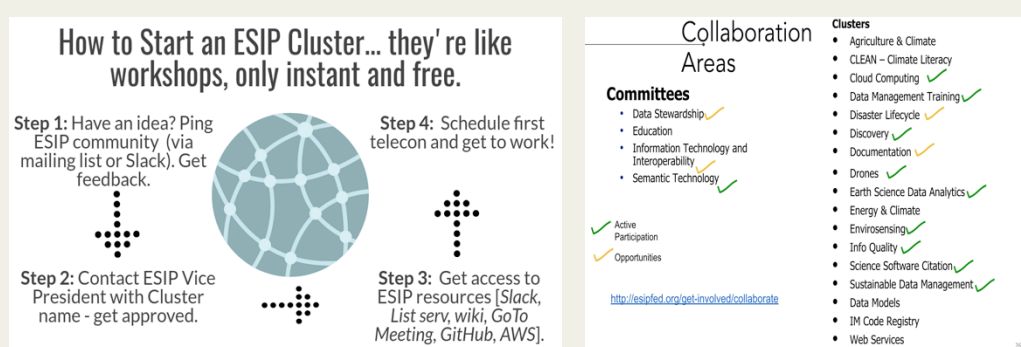
ESIP and E2SIP connect the community at the person and organization level in person and through virtual collaboration spaces. ESIP is in discussion with ARDC to collaborate on extending backbone services.



In-Person Collaboration: The groups hosted a series of in-person meetings from May 2017 through July 2018. The planning and implementation of these events built robust bridges between the two countries distributed data communities.



Virtual Collaboration: ESIP supports collaboration areas with telecon services, wiki space



ARDC and ESIP are hosting joint telecons



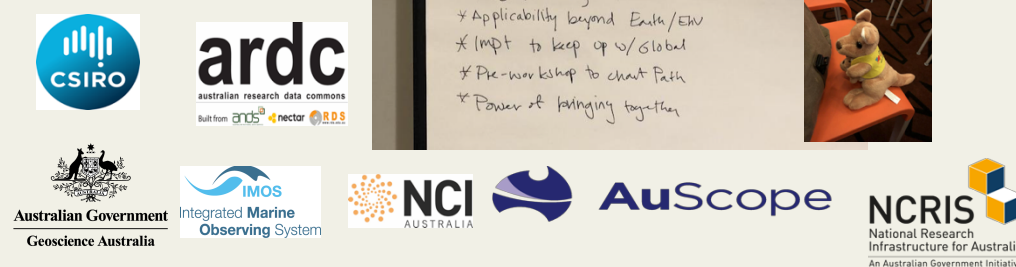
Next Joint Webinar: March 2019 – Information Quality

RESULTS

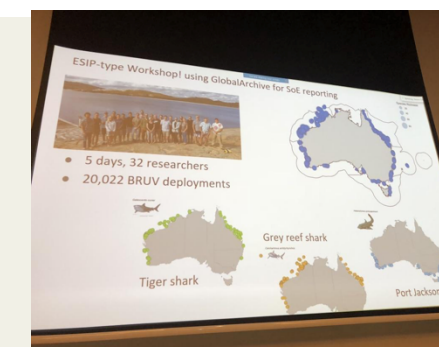


- Founded in 2018 after a pre-workshop meeting w/C3DIS
- NCRIS facilities - ALA, AuScope, IMOS, TERN, NCI, ARDC
- Cross-disciplinary institutions - CSIRO)
- Govt participation, not grants - DoEE, GA, BoM
- Smaller community – Know each other
- ARDC provides backbone organization

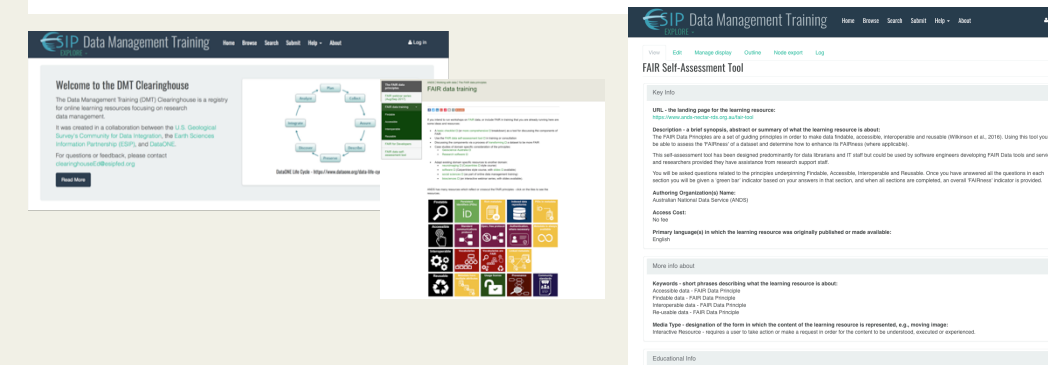
The newly formed E2SIP Community formed at the pre-workshop at C3DIS Meeting. The group was enthusiastic and had ideas for what should be considered for E2SIP several next steps



ESIP member, IMOS, in Australia are having ESIP-like meetings



ESIP and ARDC are working together on Data Management Training & Enabling FAIR Data



CONCLUSIONS

ESIP's backbone infrastructure and combined US/ Australian community interest has led to an exciting collaboration. It is extremely positive that the initiatives have been picked up by additional community members beyond the original core collaborators and we look forward to finding more ways to connect across time-zones and topics in the coming year.

For details on E2SIP and to get involved, checkout: <http://bit.ly/E2SIP>