

Bathymetry and Resolution: Keys to Develop a Channel-to-Ocean Basin-Scale Hydrodynamic Model for the US East and Gulf of Mexico Coasts

Maria Teresa Contreras*, Joannes Westerink

Co-authors: ND Computational Hydraulics Laboratory, NOAA Storm Surge Modeling, USACE Research & Development Center Coastal & Hydraulics Laboratory, Computational Hydraulics Group University of Texas at Austin

*mcontre3@nd.edu

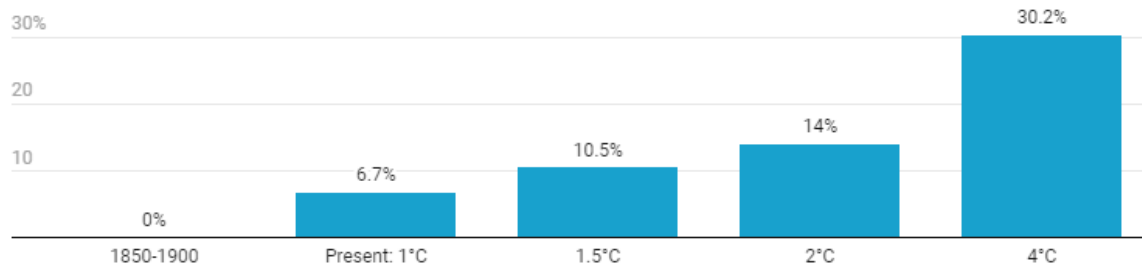
AGU 2021, New Orleans, LA.



Motivation – Global Warming

Clausius-Clapeyron relation: With every 1 degree Celsius (1.8 F) increase in temperature, there can be about 7% more moisture in the air.

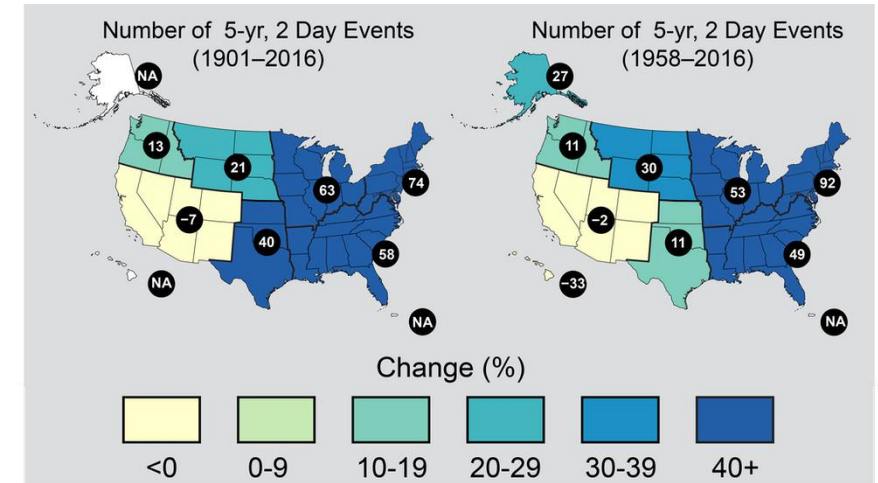
A small bit of added moisture can lead to a lot more rain:



Compared to the 1850-1900 average. 1° Celsius increase = 1.8° Fahrenheit increase.

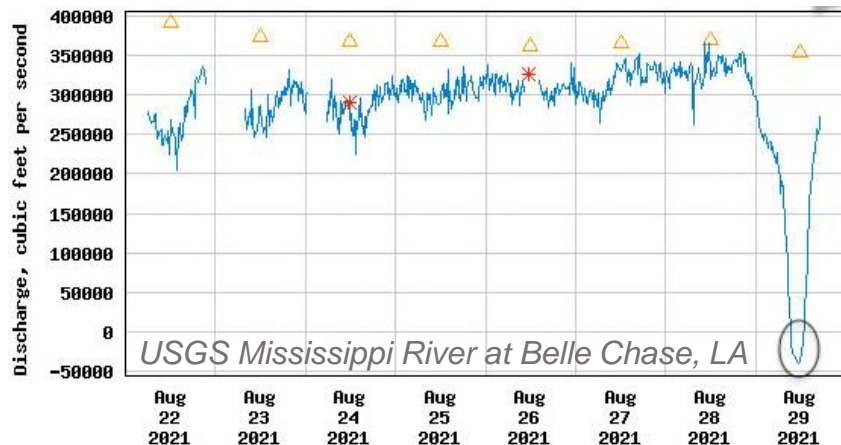
IPCC 6th Assessment Report (2021)

Intensity of rainfall is expected to increase as the climate warms



4th National Climate Change Assessment (2018)

Hurricane Ida 2021



NWS Eastern Region
@NWSEastern

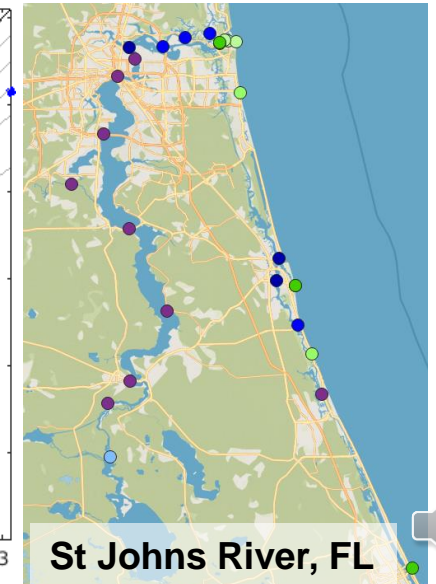
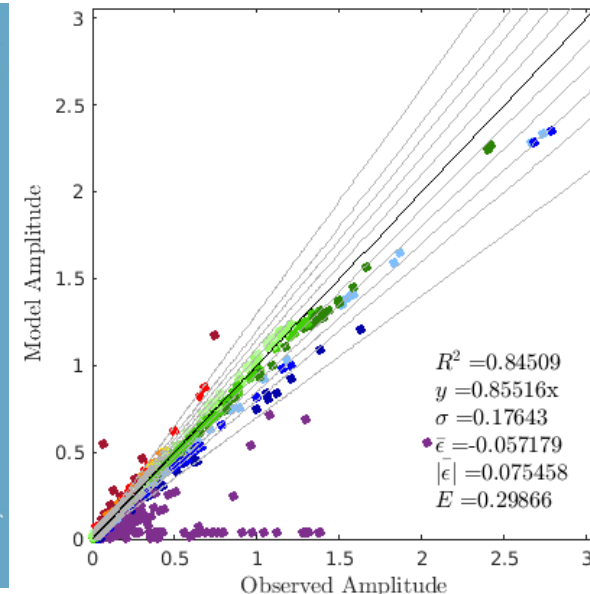
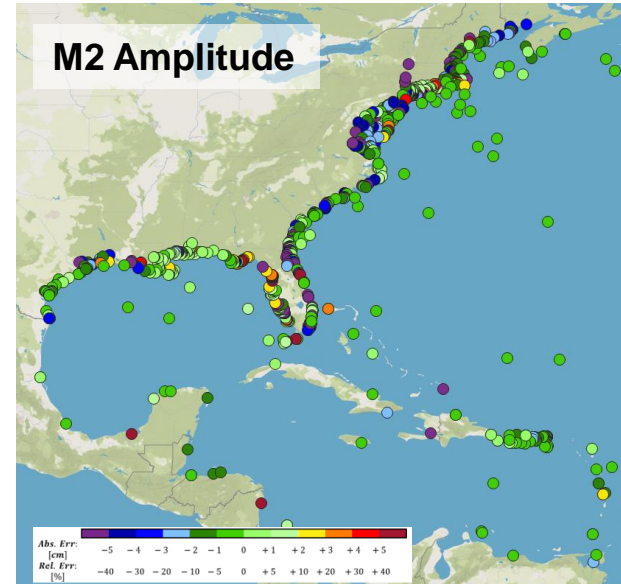
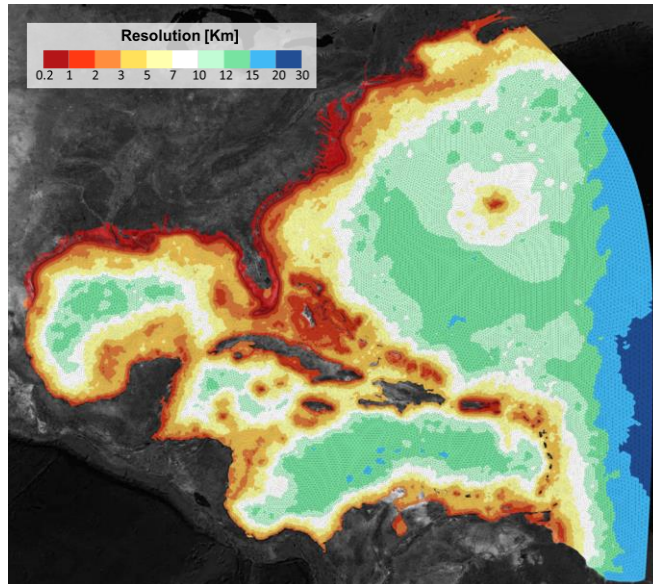
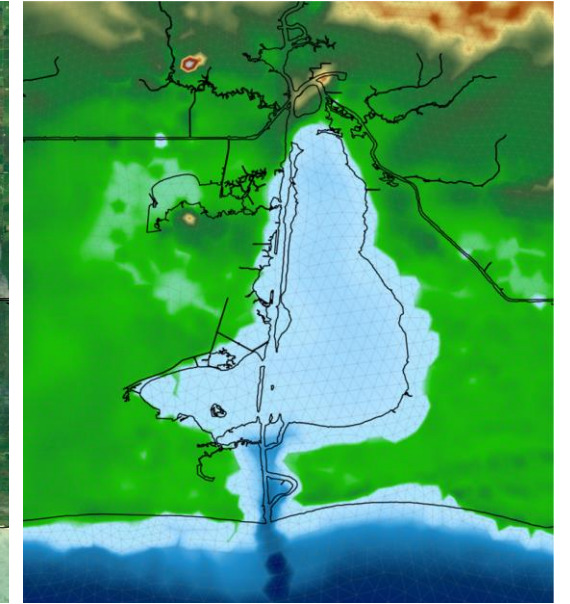
Observed rainfall totals for the last 48 hours ending 9 am Thursday September 2nd. Rainfall rates at some locations were 2.5-3.5 inches per hour. Newark NJ received 3.24" from 8-9 pm & Central Park saw 3.15" from 9-10 pm, both all time records for highest 1-hour rainfall totals

[Traducir Tweet](#)



Motivation – Current ESTOFS

- 250 m resolution ESTOFS model
- Sub-optimal grids: linear variation of resolution
- Highly simplified river network
- Poor definitions of inland waterbodies: source of instabilities and inaccuracy



Objective

Develop methodologies/tools to create models that efficiently and accurately resolve the hydrodynamics of both, ocean basins and riverine systems.



Resolve the complexity of the nearshore region

Increase the heterogeneity of the systems to resolve

Efficient distribution of resolution for operational purposes

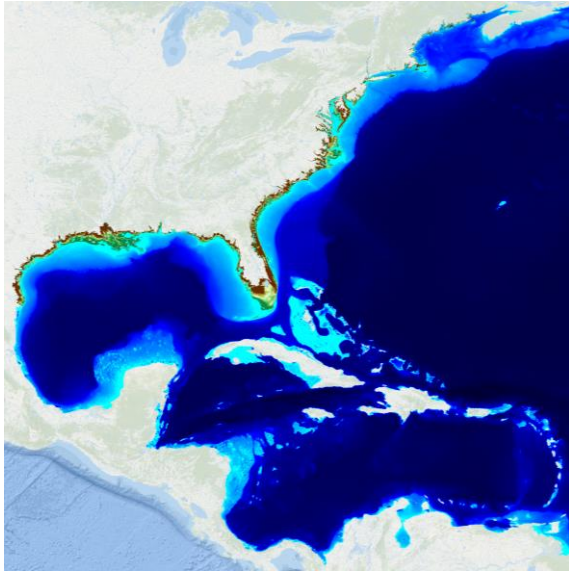
Study case: East and Gulf of Mexico Coast of the US

Key to incorporate additional physical forcing in future research



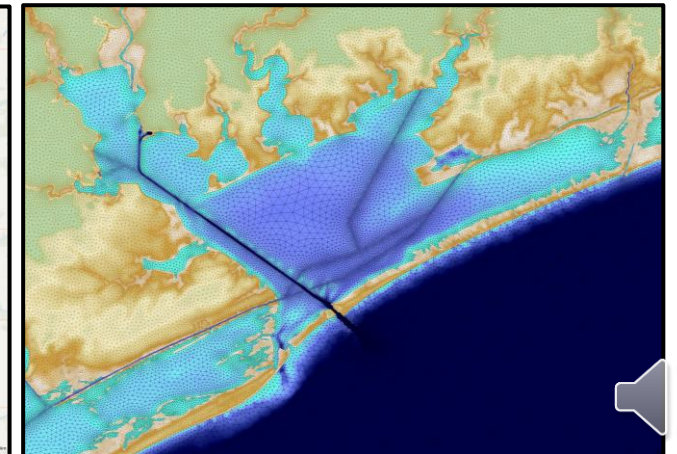
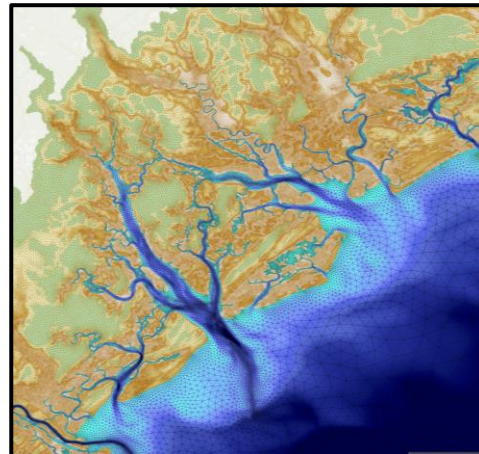
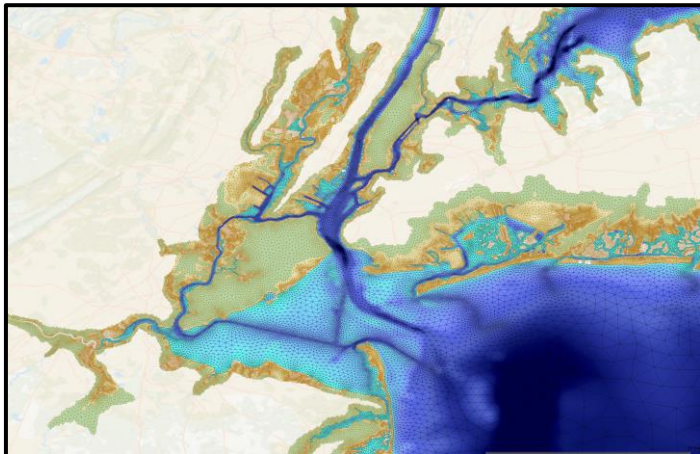
Mesh implementation

Basin-to-channel East and Gulf of Mexico Coasts of the US



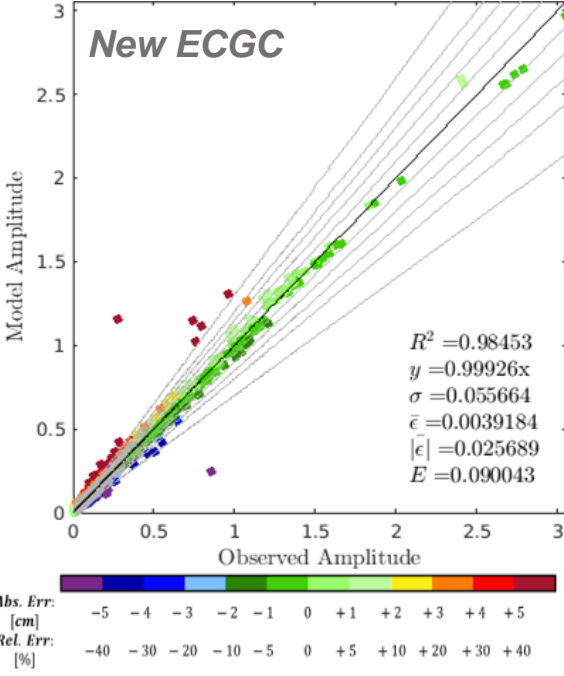
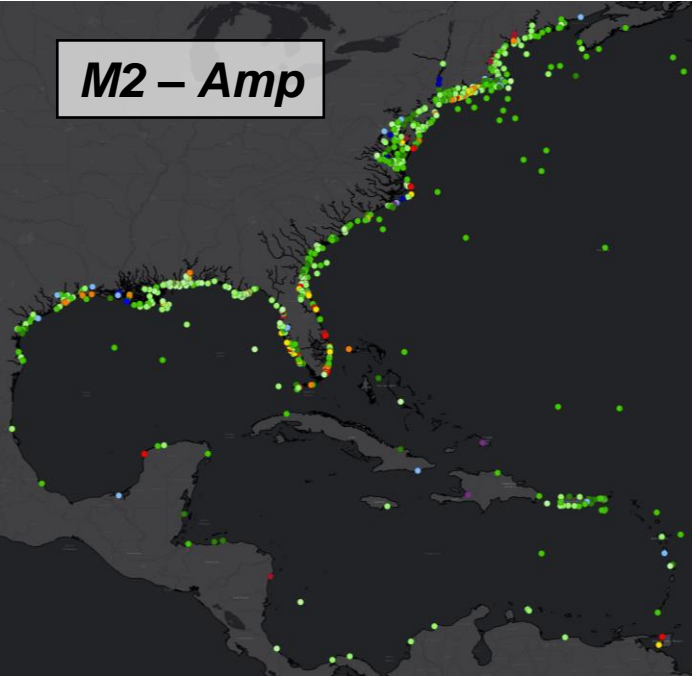
- Two regional models: 30 and 120 m minimum resolution
- Model solve the deep ocean (North Atlantic) and intercoastal complex features, including inland river network
- Model 120 m is a good balance between accuracy and efficiency
- Model 30 m for design studies

	Model 30 m	Model 120 m
<i>Min. Res</i>	30 m	120 m
<i>Max. Res</i>	24 Km	24 Km
<i>Nodes</i>	21.5 M	6.0 M
<i>Elements</i>	43.0 M	11.8 M

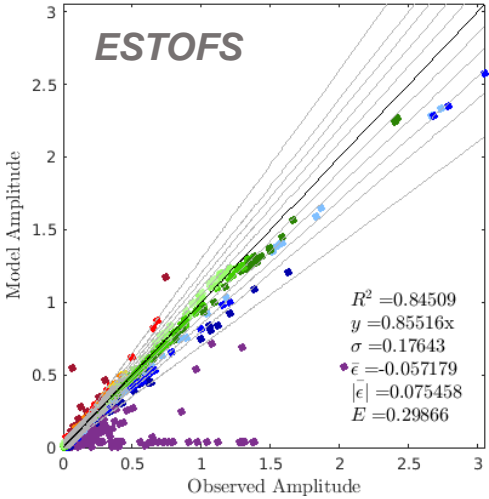
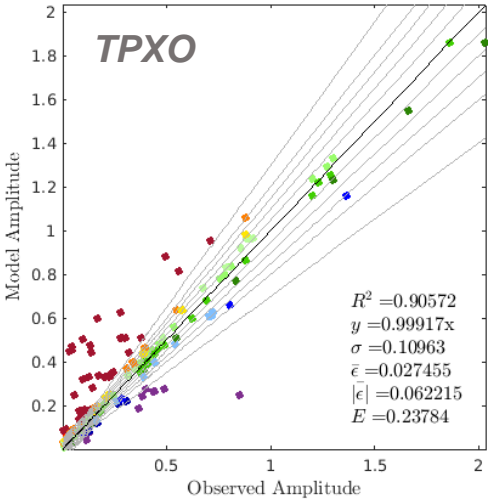


Mesh validation - Tides

Tidal analysis for amplitude and phase of 8 major constituents
Comparison of results against ~800 tidal gauges

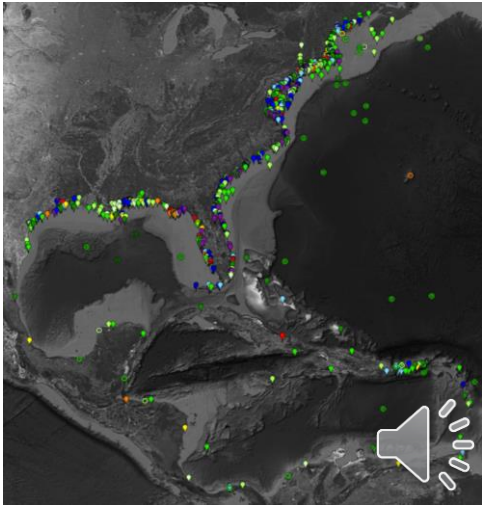
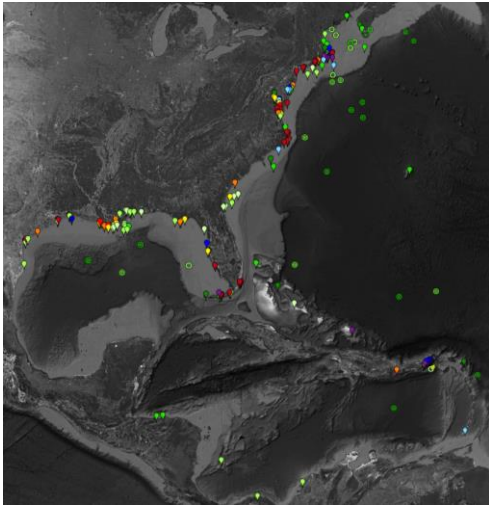


Comparison with TPXO and ESTOFS



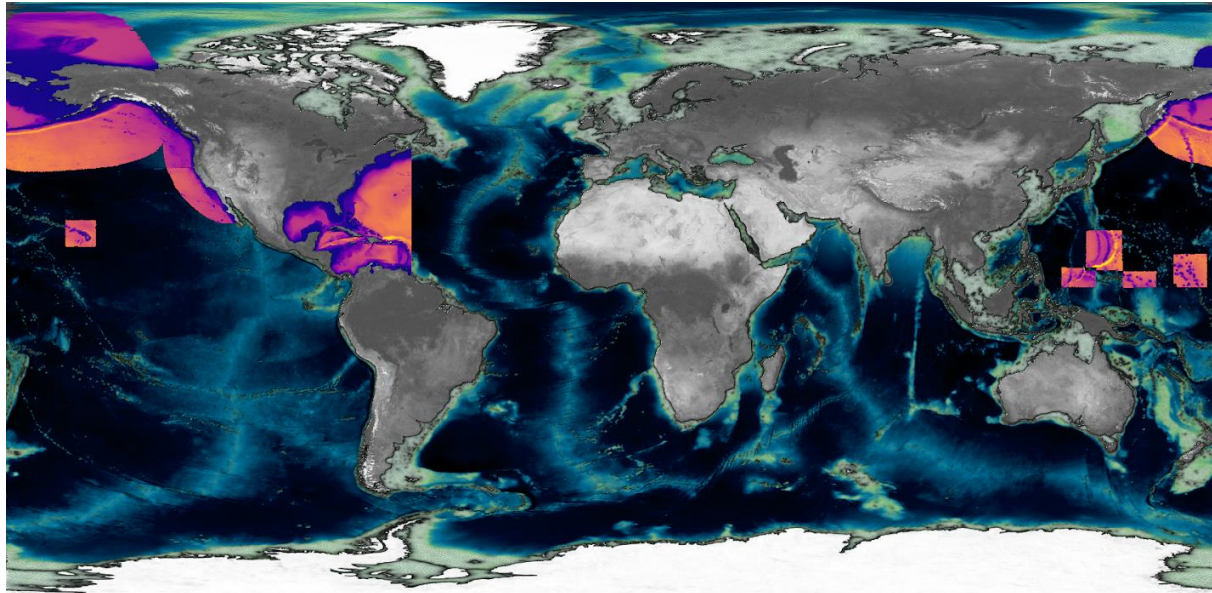
Amplitude				
	M2	S2	K1	O1
$R^2 [-]$	0.994	0.966	0.847	0.933
$\sigma [cm]$	3.332	1.294	1.573	1.029
$\bar{\epsilon} [cm]$	0.191	0.259	0.051	0.053
$ \bar{\epsilon} [cm]$	2.231	0.856	1.157	0.681
$E [-]$	0.054	0.131	0.151	0.116

Phase				
	M2	S2	K1	O1
$R^2 [-]$	0.976	0.943	0.974	0.980
σ	15.903°	21.930°	13.871°	12.863°
$\bar{\epsilon}$	-7.005°	-7.281°	-2.075°	-4.338°
$ \bar{\epsilon} $	10.177°	13.185°	7.892°	8.840°
$E [-]$	0.106	0.1450	0.074	0.071



Bonus: NOAA Operational Global Model

Global shell + HR inserts:

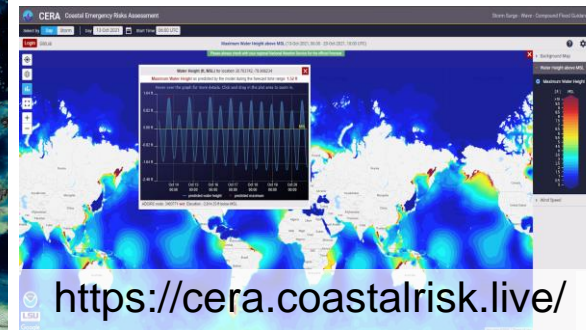


8 M nodes mesh, 6 sec timestep

Forecast 4 times a day for 7 days

Parallel system at ND for a prototype of v3.0

Collecting global statistics

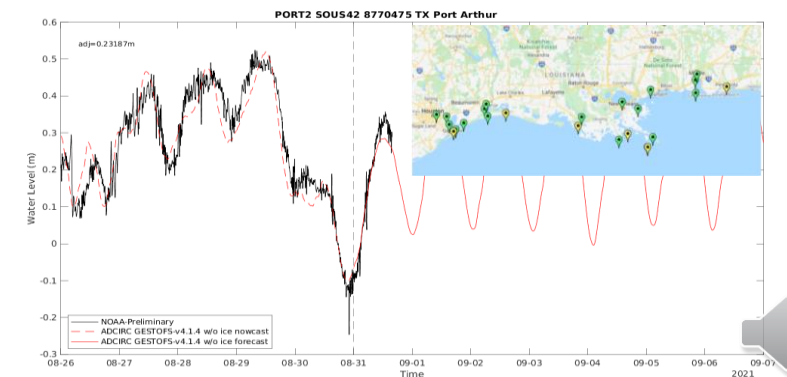
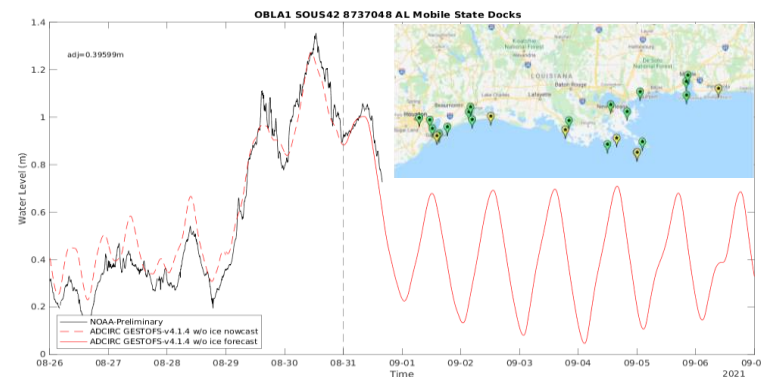
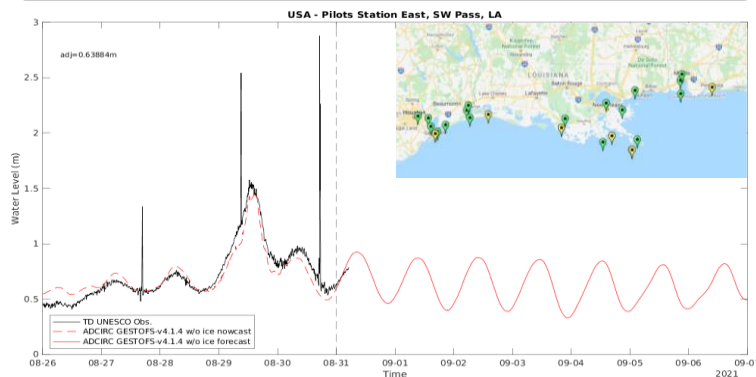


<https://cera.coastalrisk.live/>



<https://gm-ling.github.io/GESTOFS-develop/>

Hurricane Ida 2021



Key N°1: Wet/dry separation

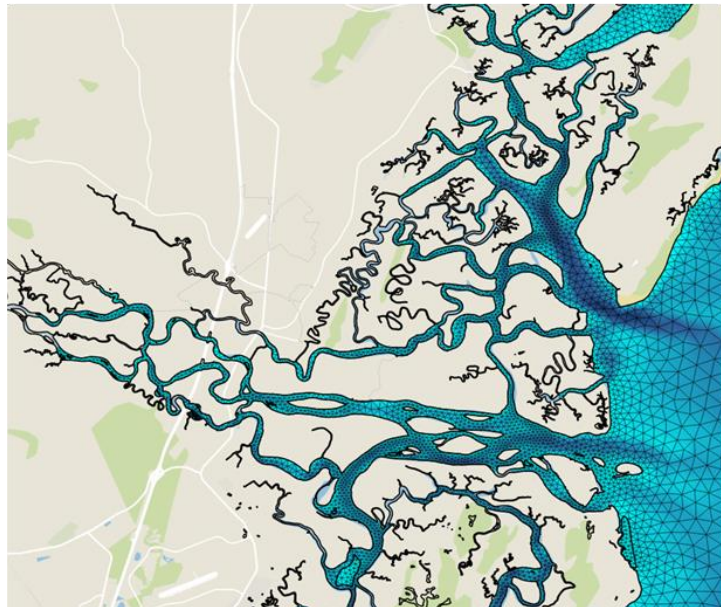
Aligning nodes along the ocean/floodplain interface allows for representing the smallest scale features in the model.

Clear hydraulic connectivity of small channels

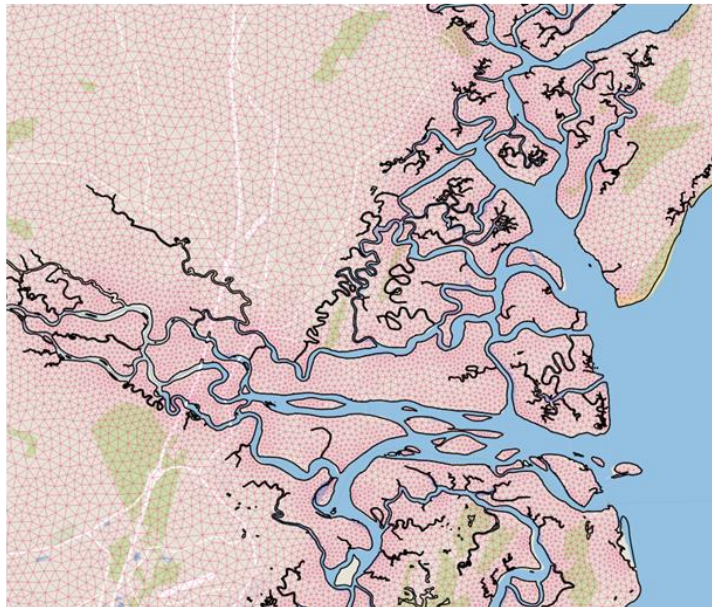
Incorporation of barrier islands and small islands

Provides more stability

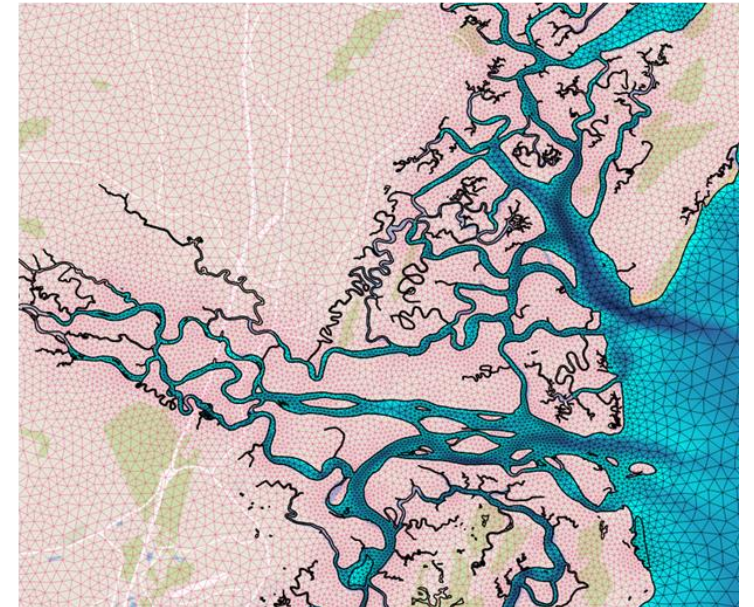
Ocean



Floodplain



Combined



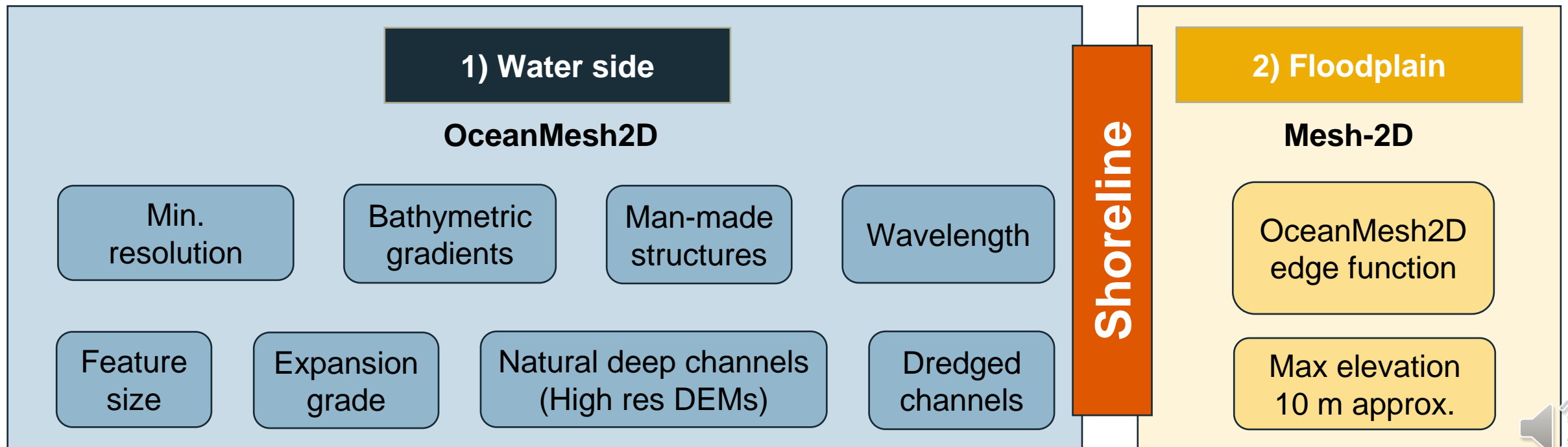
Key N°2: Resolution distribution

Parametrization of nodal distribution based on topo-bathymetric features and their geometry

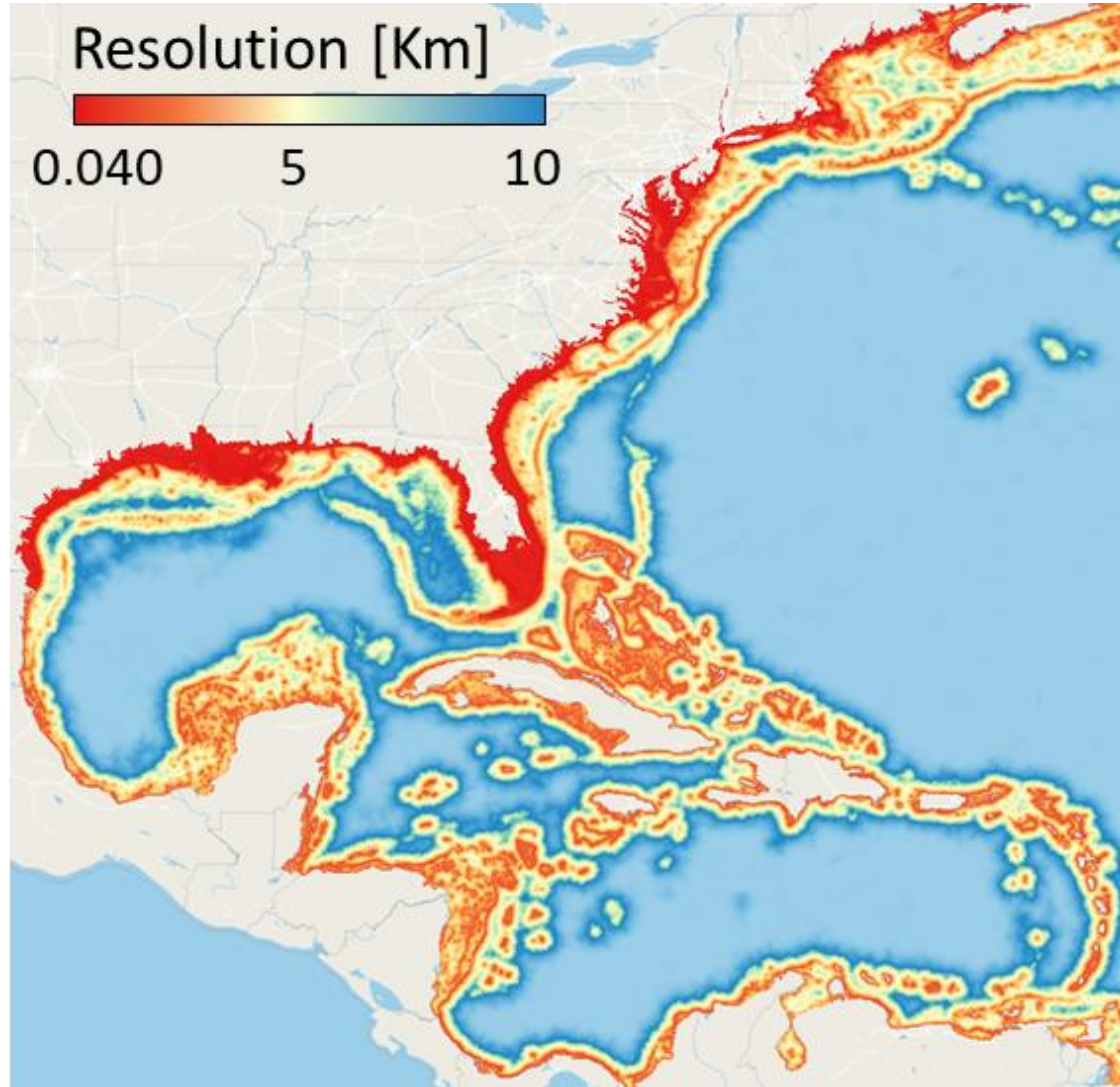
Balance between accuracy and efficiency

Prioritization of the complex nearshore region

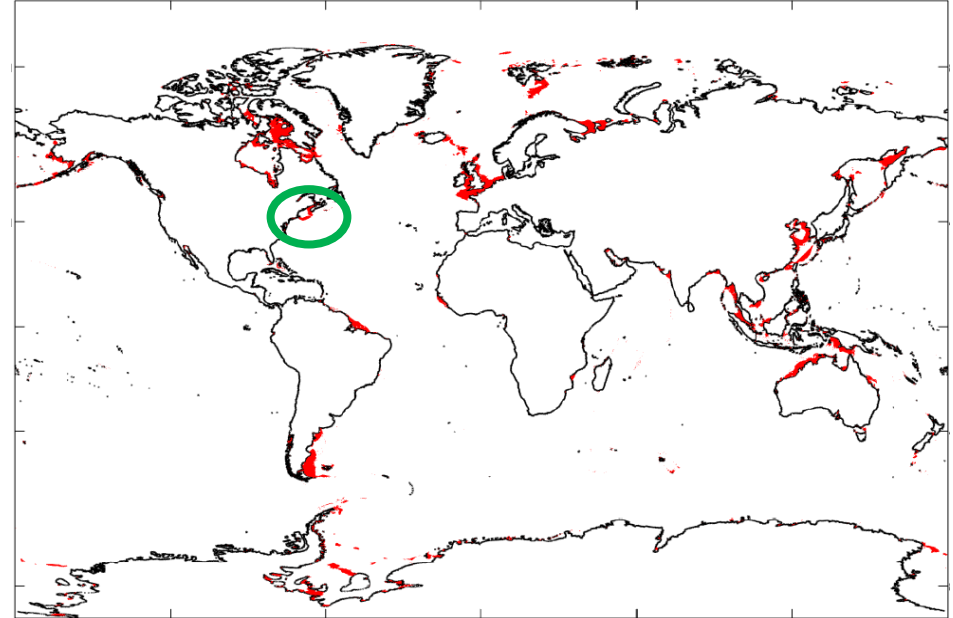
Meet computational cost constraint for operational systems



Key N°2: Resolution distribution



High-dissipation areas – Gulf of Maine



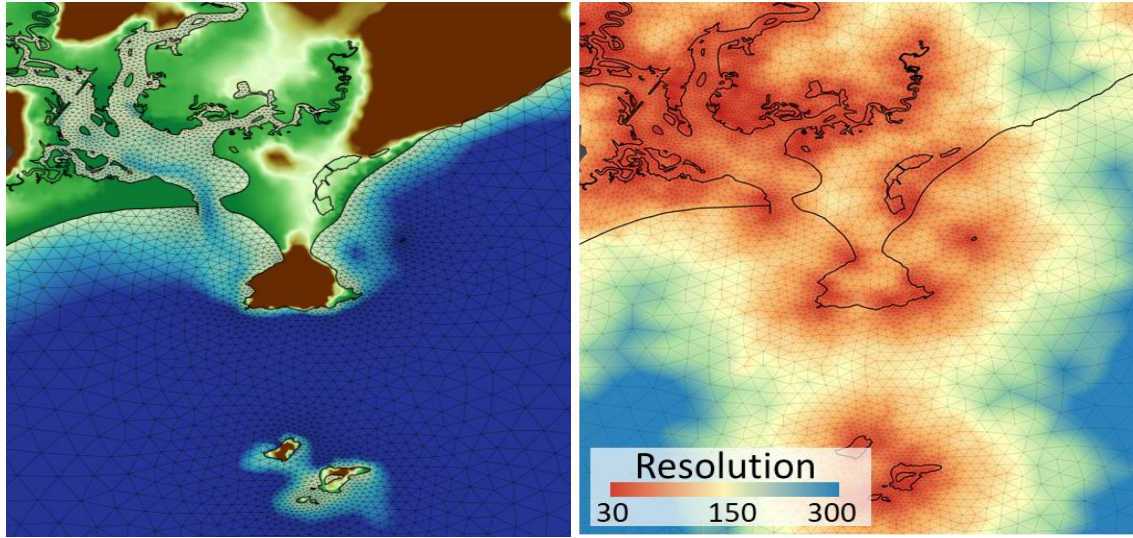
Bathymetric gradients

- Continental shelf break, submarine ridges, and rough bathymetry
- Change on wave celerity due to quick change of water depth
- Mechanism of internal tides generation



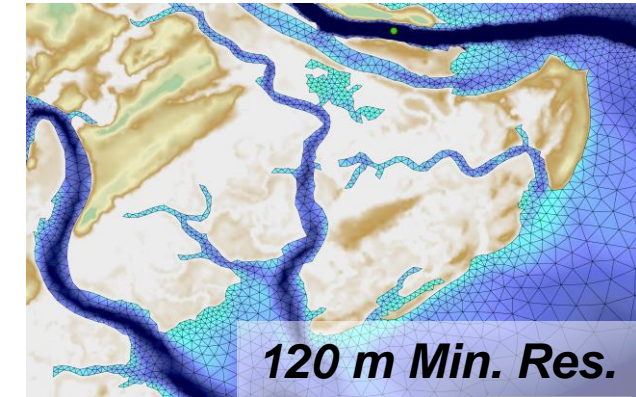
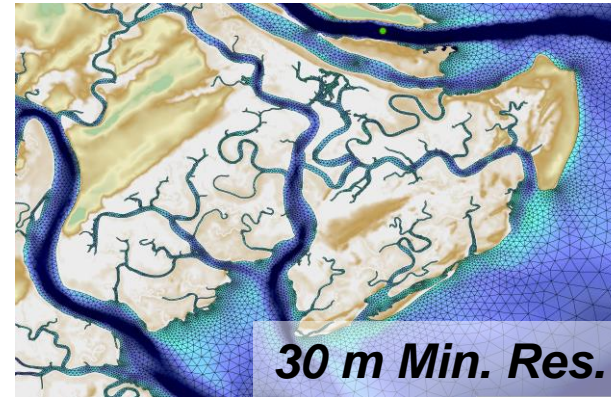
Key N°2: Resolution distribution

Feature Size – Expansion grade

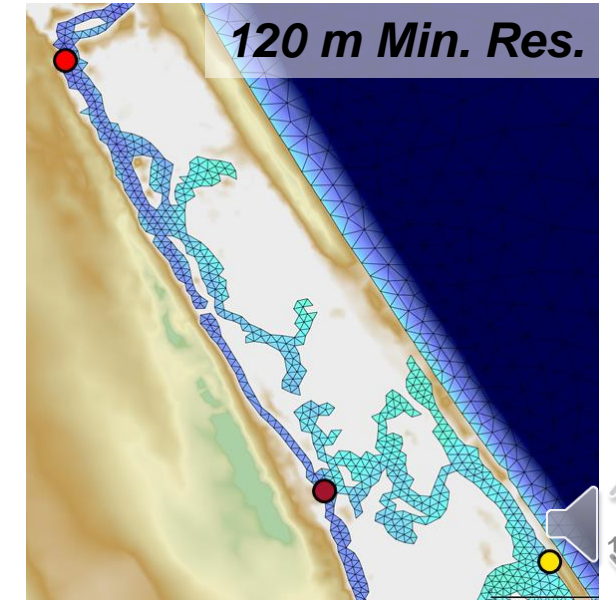
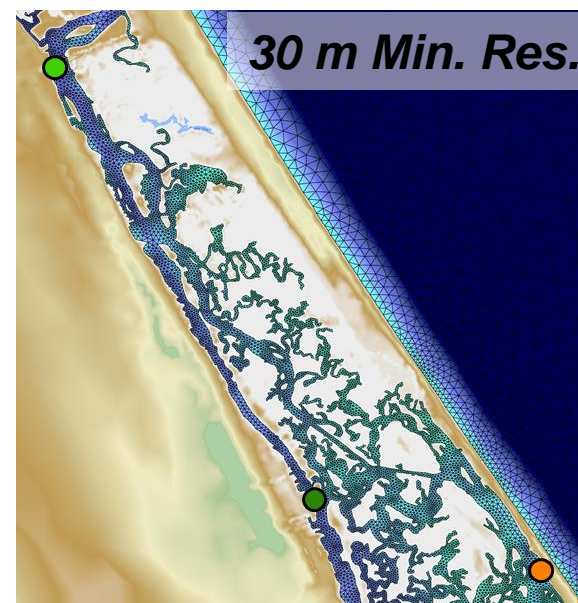


- Estimation of medial axis and feature width
- Nodal distribution based on shoreline complexity
- Prioritization of channels, islands, and shoreline geometry
- Increment of element size offshore
- Crucial for efficiency on distribution of resolution

Complex channel network



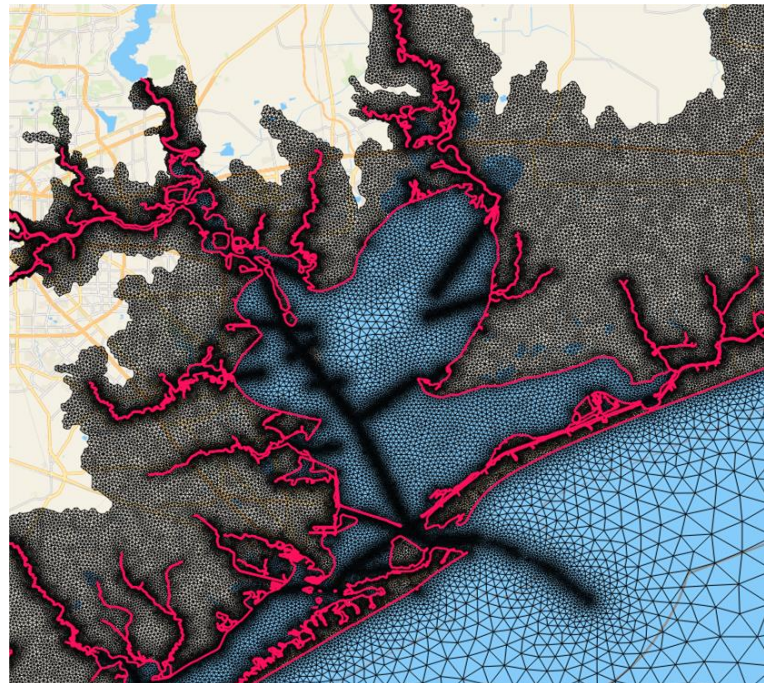
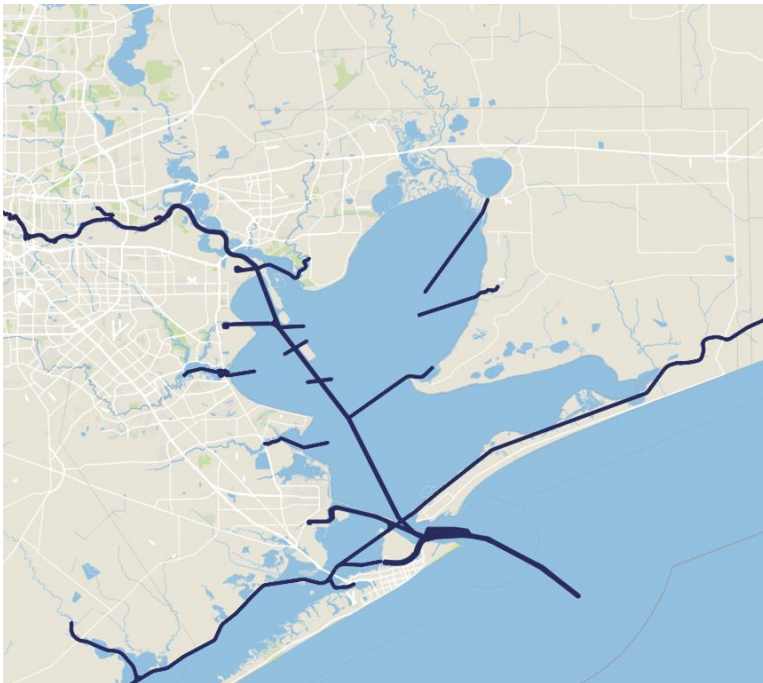
Complexity of intertidal zone



Key N°2: Resolution distribution

Natural deep and dredged channels

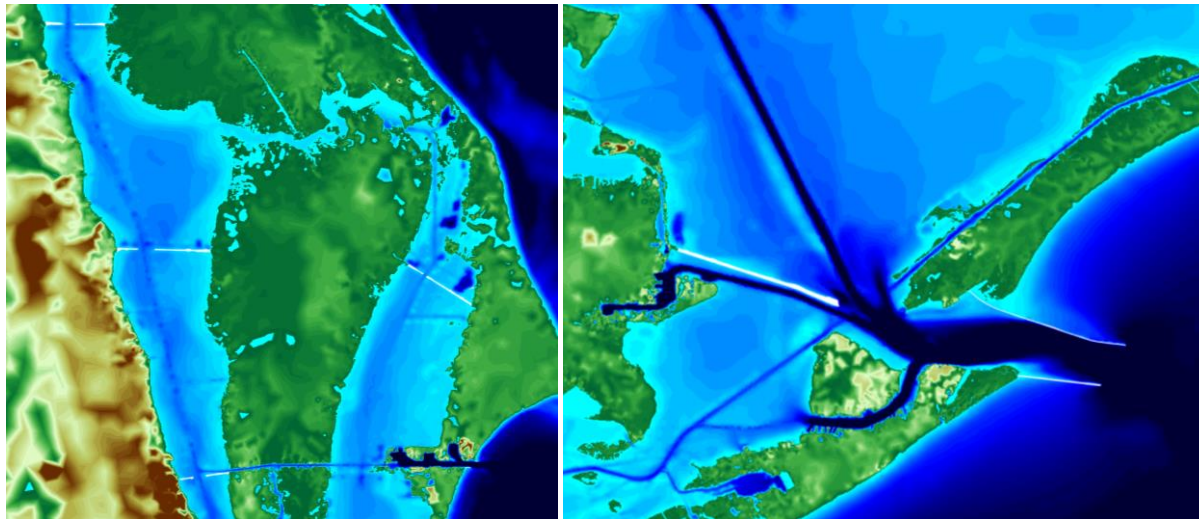
- Deep narrow channels that require higher definition to properly capture the water depth
- Crucial to preserve the conveyance
- Dredged channels based on USACE database, and natural channels derived from DEMs
- Adjustment of resolution and bathymetry



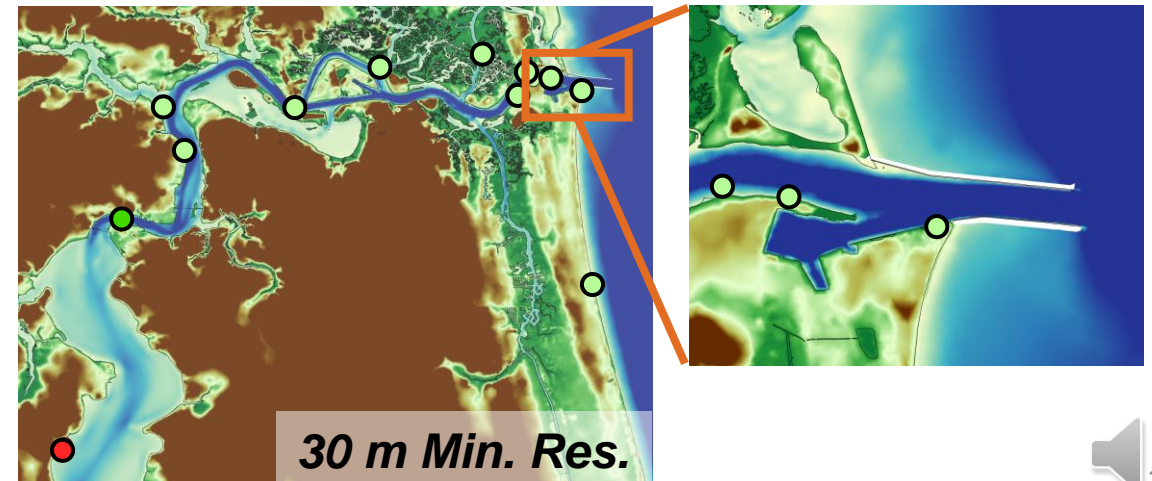
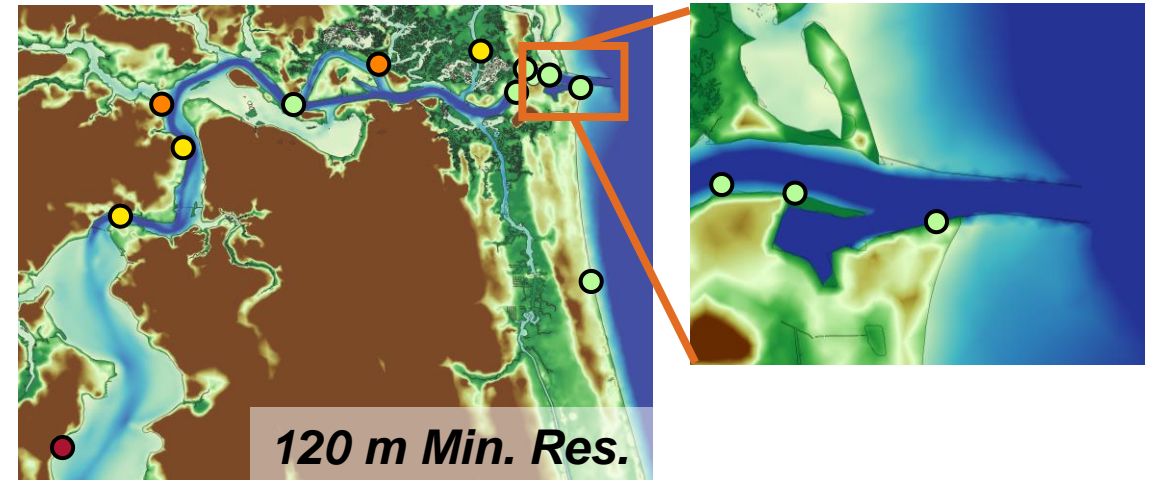
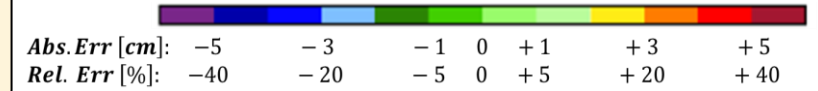
Key N°2B: Man-made structures

Jetty systems

- Creation of a dataset with 116 jetties
- Adjust shoreline and local element size function so they can be included in the minimum resolution of the model
- Only implemented for resolutions ~tens of meters.
- Open land boundary conditions



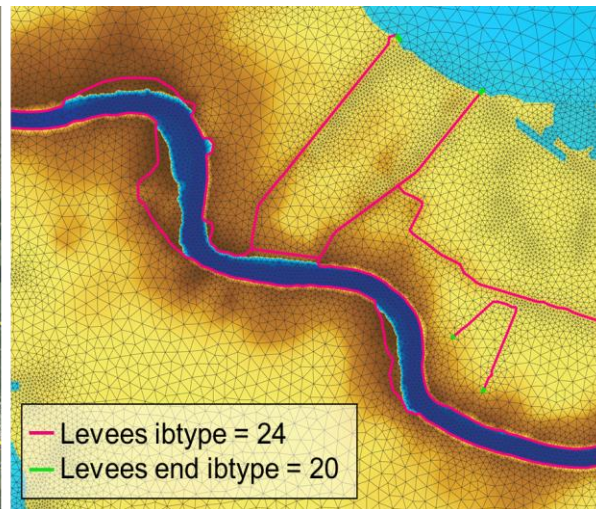
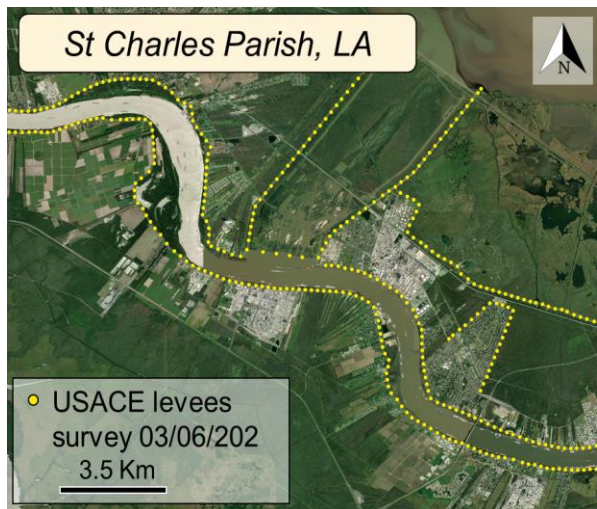
M_2 tidal constituent



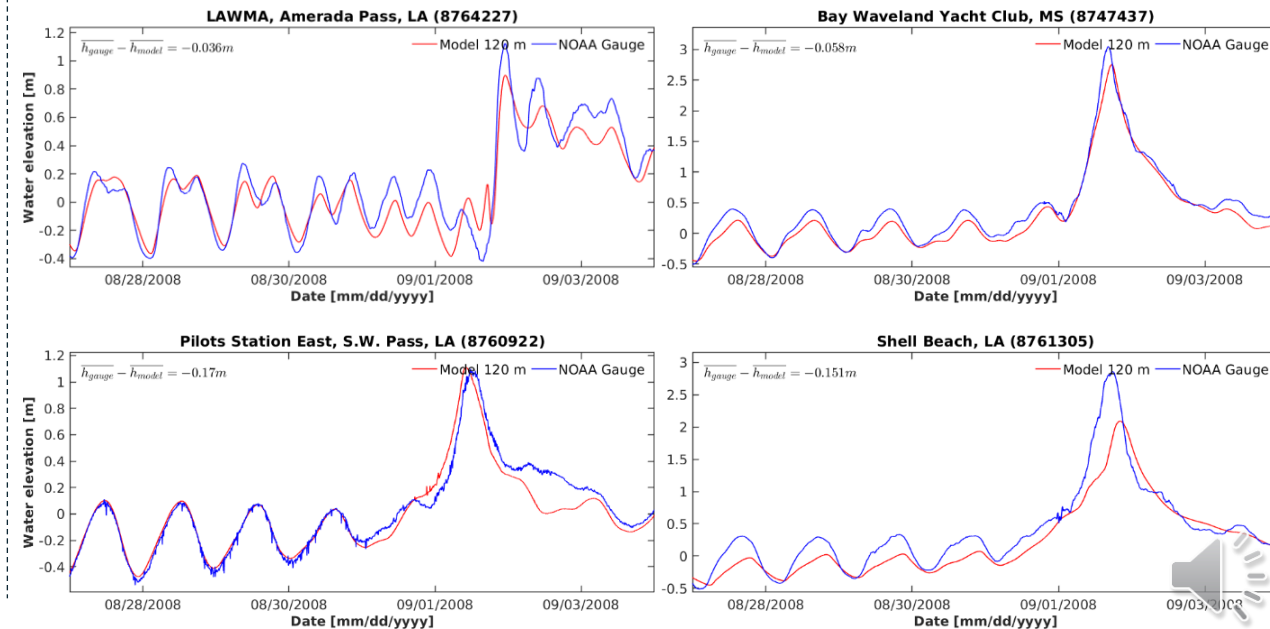
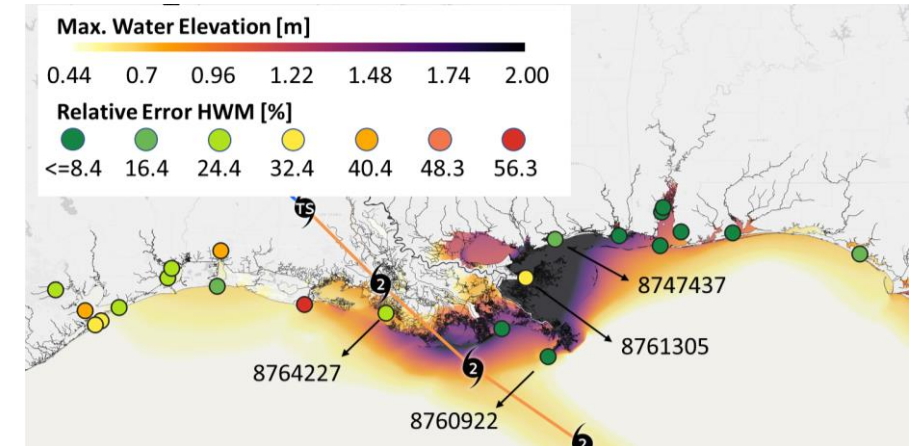
Key N°2B: Man-made structures

Levees

- USACE dataset for federal levees
- Snap the centerlines to the wet/dry interface based on the minimum resolution of the model
- Constraint levees nodes during the floodplain generation
- Weir boundary condition
- Adjustment of bathymetry to ensure clean wet/dry interface

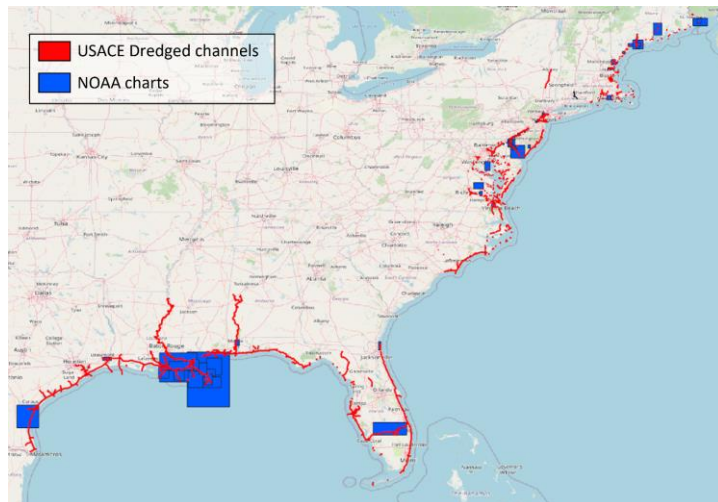
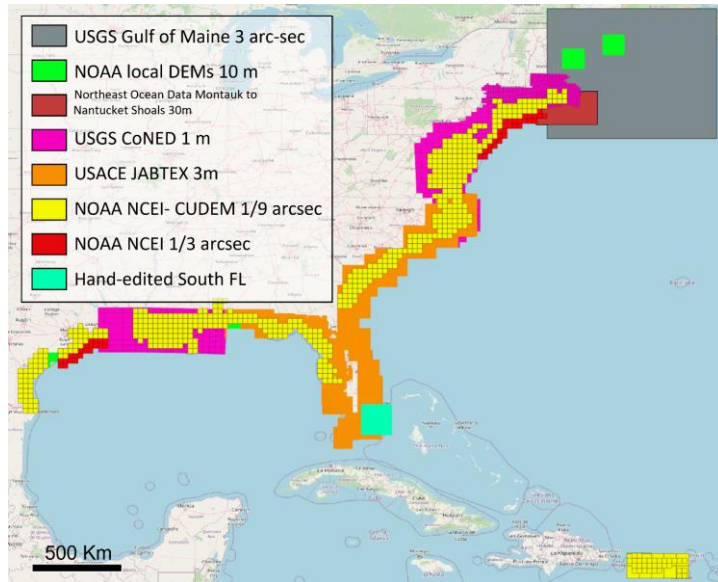


Historical storms - Gustav 2008

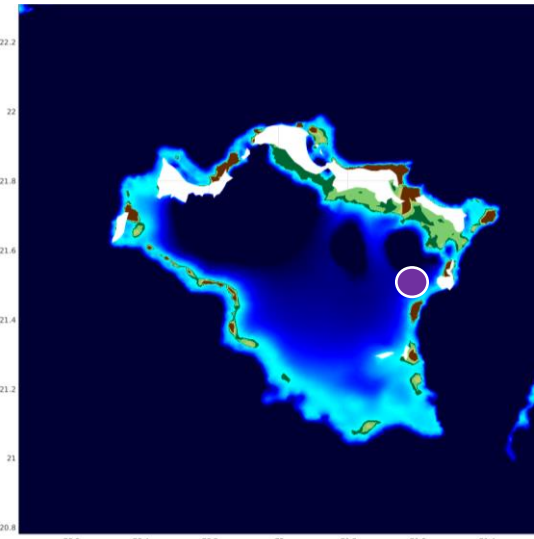
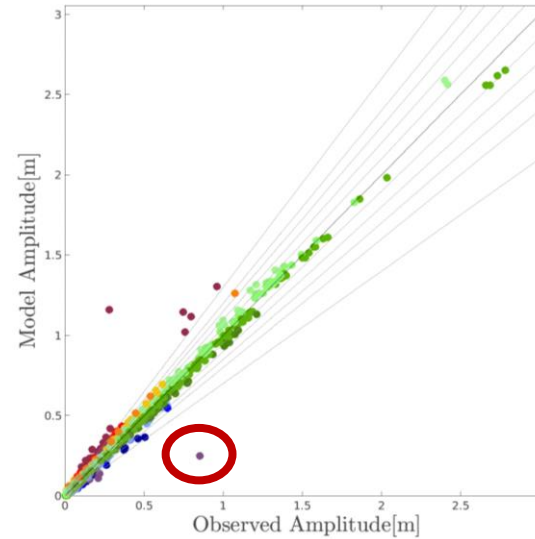


Key N°3: Correct bathymetry

Topo-bathymetric databases

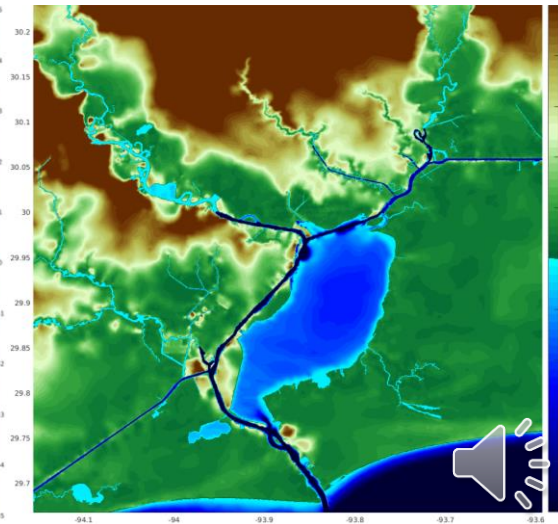
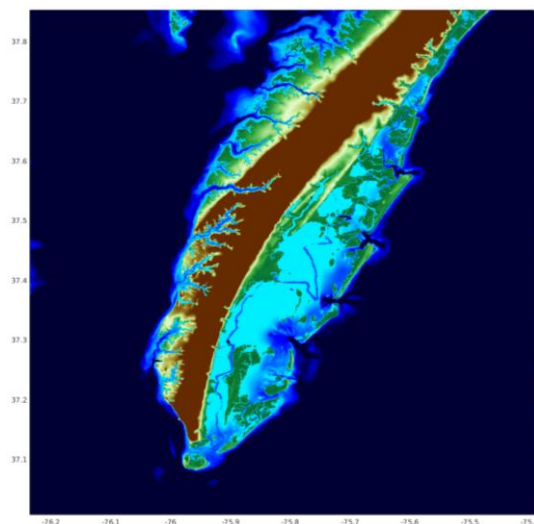


Bathymetric errors



Lack of data

Particularly in upper sections of rivers



Conclusions – future work

- Key for developing efficient channel-to-basin scale hydrodynamics models:
 - Clear wet/dry interface
 - High-resolution only where it is needed
 - Clear conveyance of river network
 - Addition of hydrodynamically relevant man-made structures
- Future work:
 - Incorporate riverine flow inputs from NWM





Thanks for your attention!

Maria Teresa Contreras*, Joannes Westerink

Co-authors: *ND Computational Hydraulics
Laboratory, NOAA Storm Surge Modeling, USACE
Research & Development Center Coastal &
Hydraulics Laboratory, Computational Hydraulics
Group University of Texas at Austin*

*mcontre3@nd.edu

AGU 2021, New Orleans, LA.

