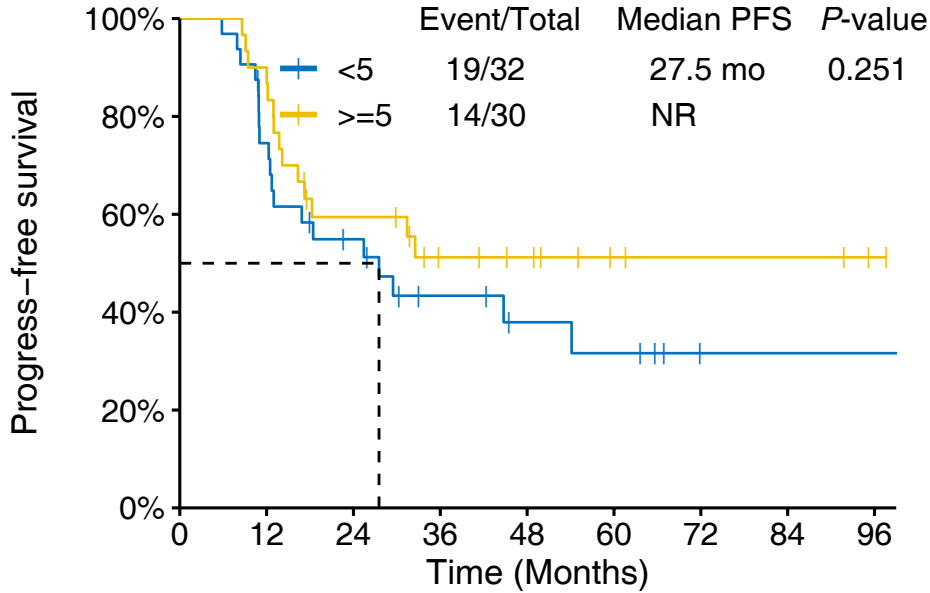


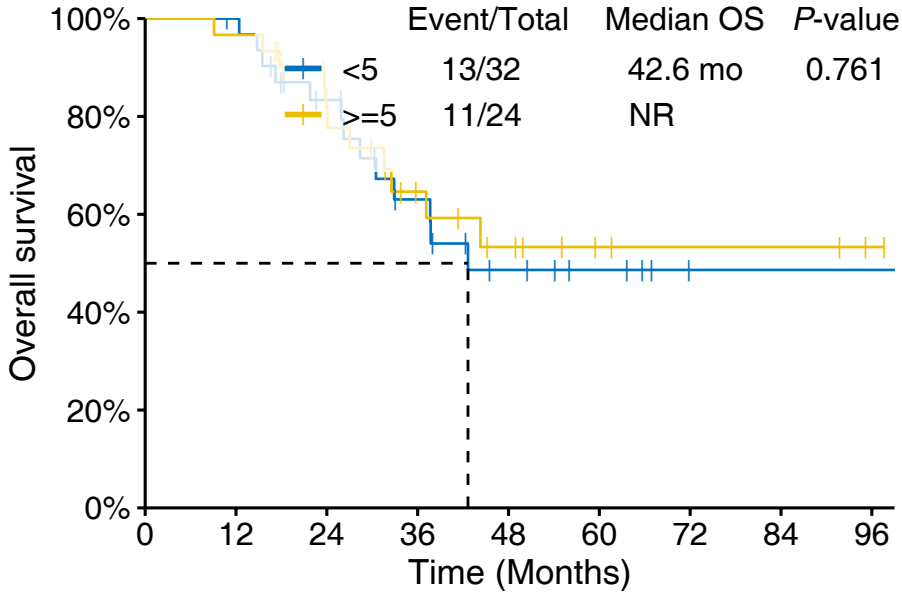
A: I-IIA PFS



No. at risk

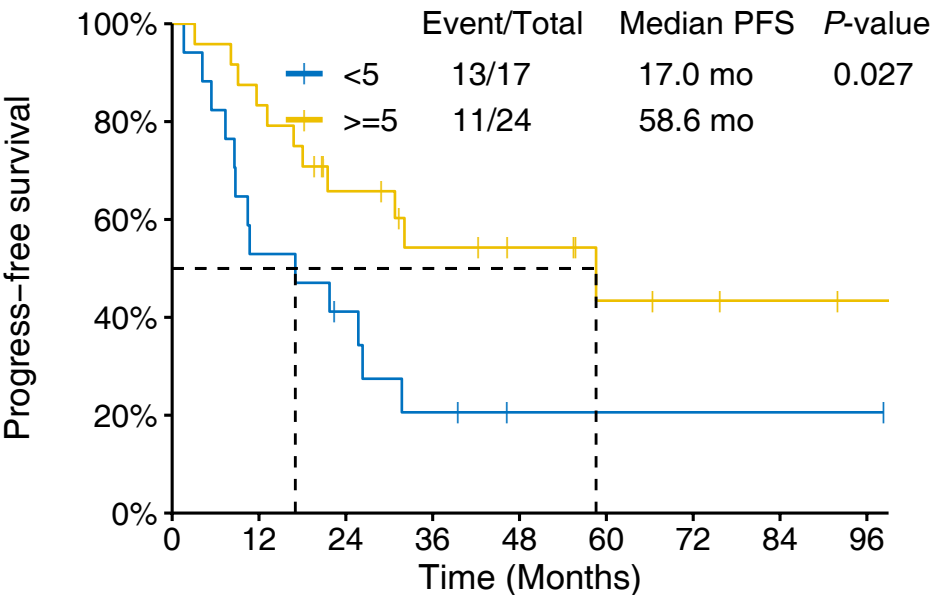
<5 courses	32	23	15	9	6	5	1	1	1
>=5 courses	30	27	16	10	8	4	3	3	1

B: I-IIA OS



	32	31	22	14	8	5	1	1	1
	30	29	20	12	8	4	3	3	1

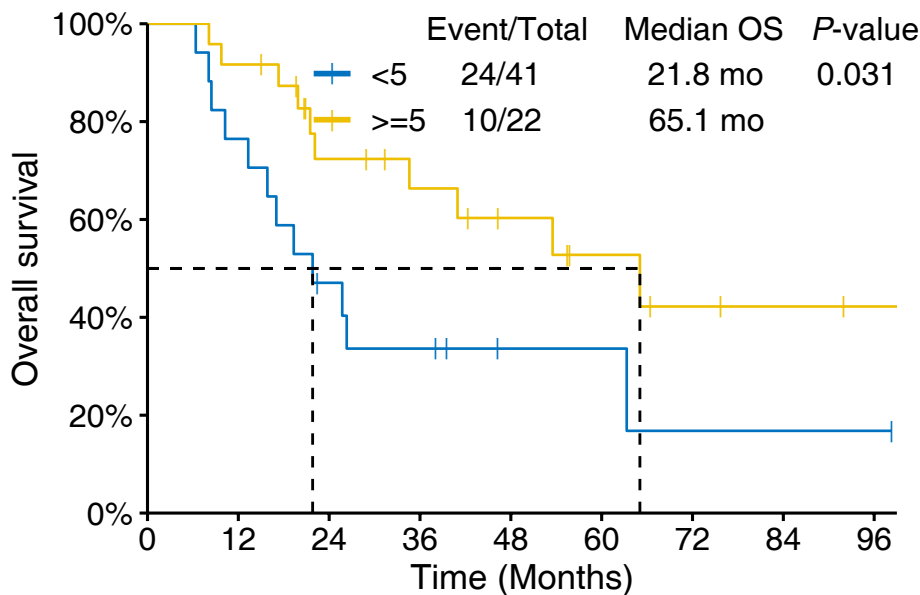
C: IIB-IIIC PFS



No. at risk

<5 courses	17	9	6	3	1	1	1	1	1
>=5 courses	24	20	13	9	7	4	3	2	1

D: IIB-IIIC OS



	17	13	7	5	2	2	1	1	1
	24	22	14	11	8	5	3	2	1