

Fortuitous detection of extensive gutta-percha extruded into the maxillary sinus during root canal treatment on the 2nd upper left molar

Georges Aoun

Correspondence: Professor Georges Aoun, Department of Oral Medicine and Maxillofacial Radiology, Faculty of Dental Medicine, Lebanese University, Beirut, Lebanon. E-mail: dr.georgesoun@gmail.com. ORCID ID: <http://orcid.org/0000-0001-5073-6882>

Abstract

Close proximity between the maxillary teeth roots and the maxillary sinus can lead to an unintentional deposition of endodontic obturation materials into the latter. Among these materials the injectable thermoplasticized gutta-percha as a consequence of overfilling. In this report, a case of extensive gutta-percha extruded into the maxillary sinus during root canal treatment on the 2nd upper left molar is presented.

Case presentation

A healthy 40-year-old woman presented for dental check up. On panoramic radiograph we noticed extreme overextension of gutta-percha within the maxillary sinus after endodontic treatment on tooth #27 (Figure 1).

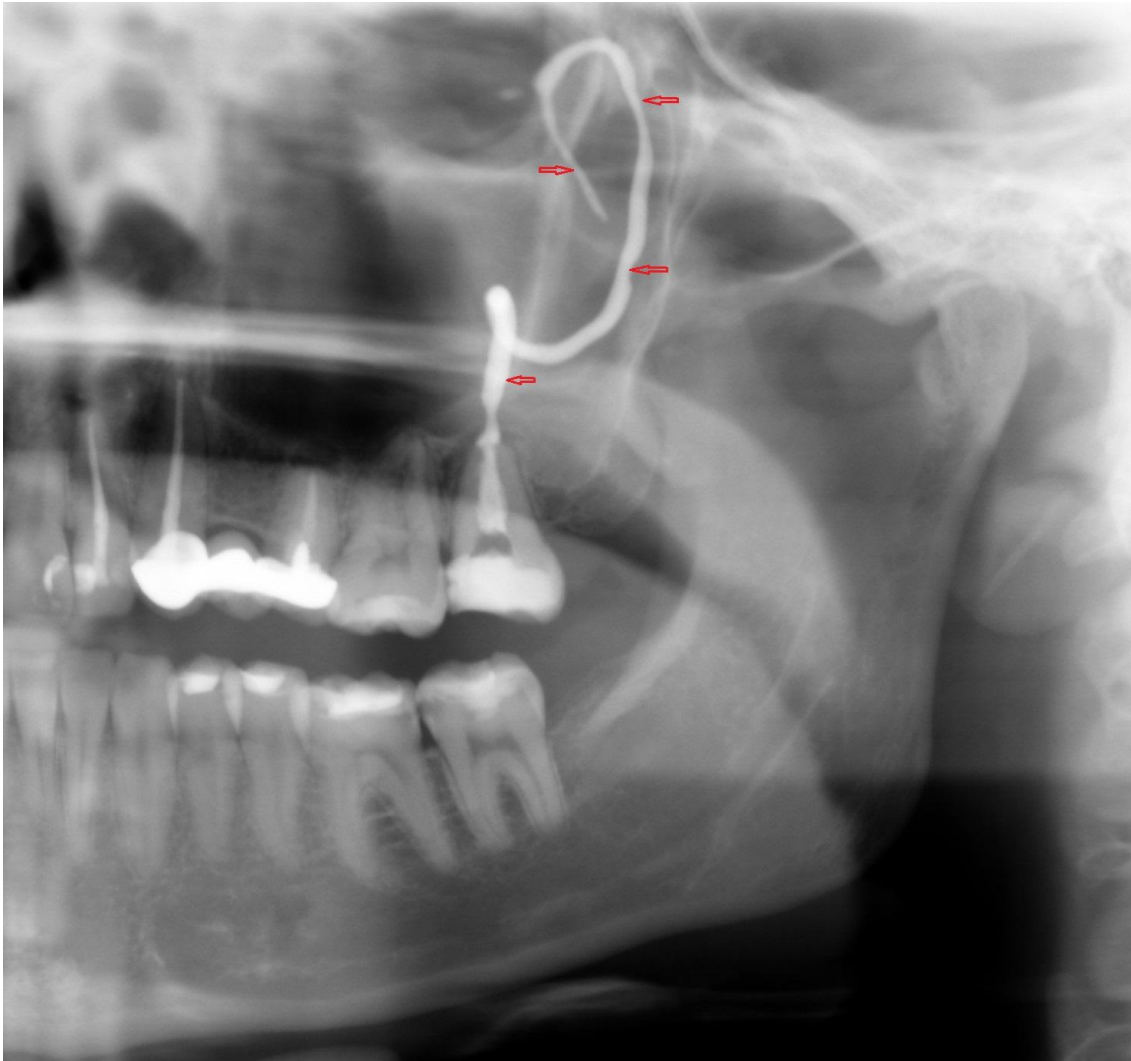


Figure 1: Radiograph showing extensive gutta-percha extruded into the maxillary sinus (arrows) during root canal treatment on the 2nd upper left molar

The patient revealed having undergone root canal treatment two months before and being completely symptoms free.

Further radiological investigations (three-dimensional imaging / CBCT) are scheduled in order to elaborate the adequate treatment plan.

References:

1. Brooks JK, Kleinman JW. Retrieval of extensive gutta-percha extruded into the maxillary sinus: use of 3-dimensional cone-beam computed tomography. J Endod. 2013;39(9):1189-93. doi: 10.1016/j.joen.2013.04.006.
2. Yamaguchi K, Matsunaga T, Hayashi Y. Gross extrusion of endodontic obturation materials into the maxillary sinus: a case report. Oral Surg Oral Med Oral Pathol Oral Radiol Endod. 2007;104(1):131-4. doi: 10.1016/j.tripleo.2006.11.021.