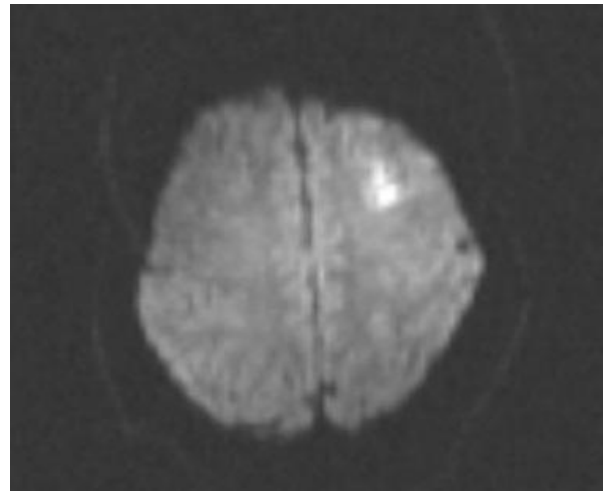
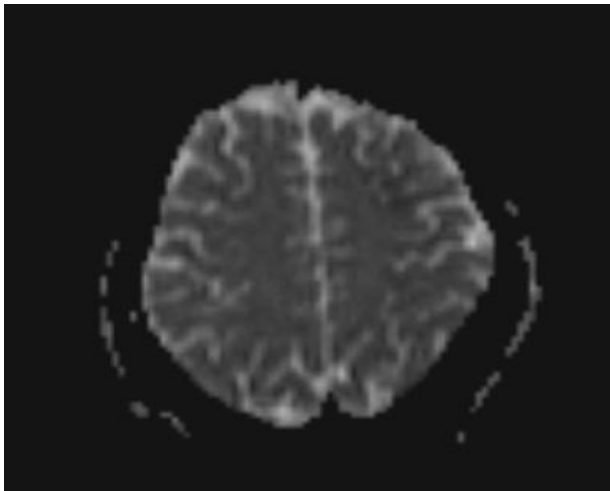


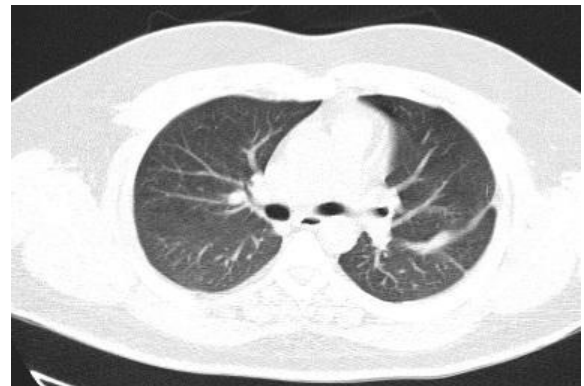
## Figures



**Picture 1:** Brain MRI revealed abnormal signal intensity in the left frontal region in T2/FLAIR, which shows restriction in DWI image in favor of acute infarction in left MCA territory.



**Picture 2:** chest CT scan in the ER on the second day of the presentation.



**Picture 3:** chest CT scan after complete treatment.