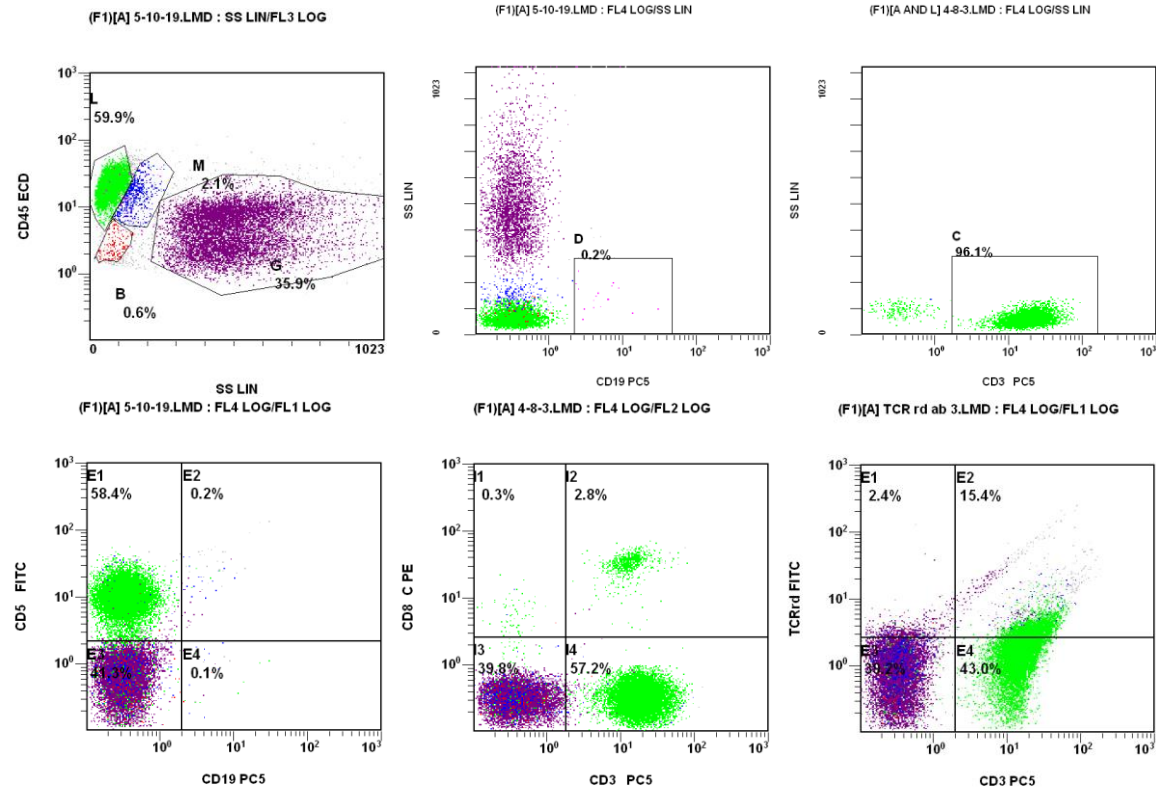


**Figure 1. The immunostaining of right inguinal lymph node for cytokines**

A. HE 40× B. HE 100× C. (BCL-6 100×), negative D. (CD3 100×), positive E. (CD20 100×), positive F. (CD21 100×), negative G. (CXCL13 100×), negative H. (ki-67 100×), positive I. (MUM-1 100×), positive J. (PAX-5 100×), positive K. (PD-1 100×), positive L. EBER (Molecular diagnosis), positive

Based on the picture A and B the structure of the lymph node is partially destroyed, with atypical large cells scattered in it, with rich cytoplasm, large nuclei, and some with double nuclei and larger nucleoli. There are T-cell lymphomas in multiple lymph nodes, and some lymph nodes also have focal classic Hodgkin's lymphoma



**Figure 2. Flow cytometry of bone marrow**

We also labeled CD2, CD4, CD7, CD10, CD11c, CD16, CD20, CD22, CD23, CD56, CD57, CD103, CD200, TCRab, FMC7, IgM; skappa, sLambda, these antigens are negative