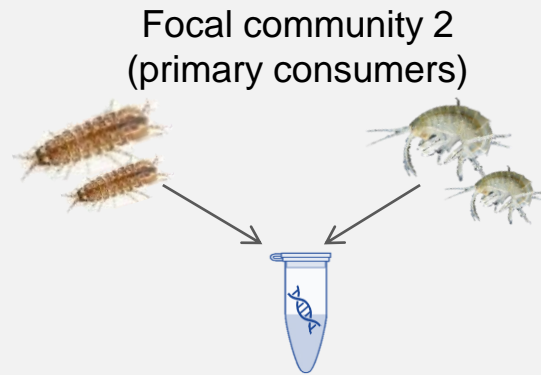
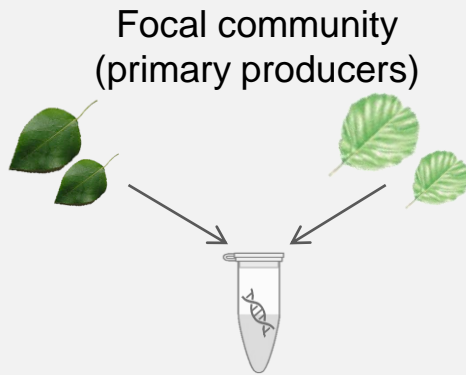


(a) Biological samples (from individuals to DNA)



(b) Bioinformatics and sequencing

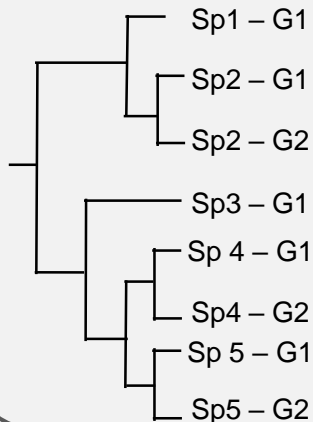


Identifying phylogenetically-candidate genes (PCCGs) specific to each guilds

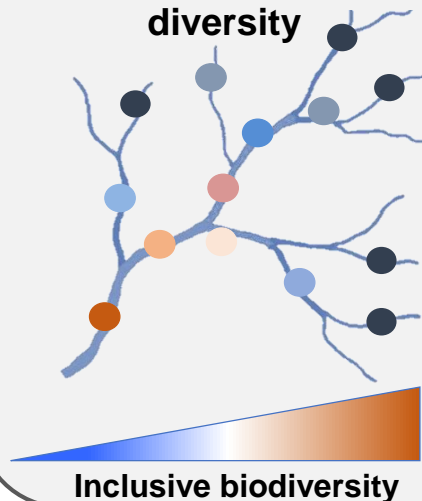
Sequencing PCCGs, revealing intra- and interspecific diversity of each guild



(c) Revealing PCCGs diversity within guilds



(d) Mapping PCCGs diversity



(e) Linking PCCGs to ecological processes (and *vice versa*)

