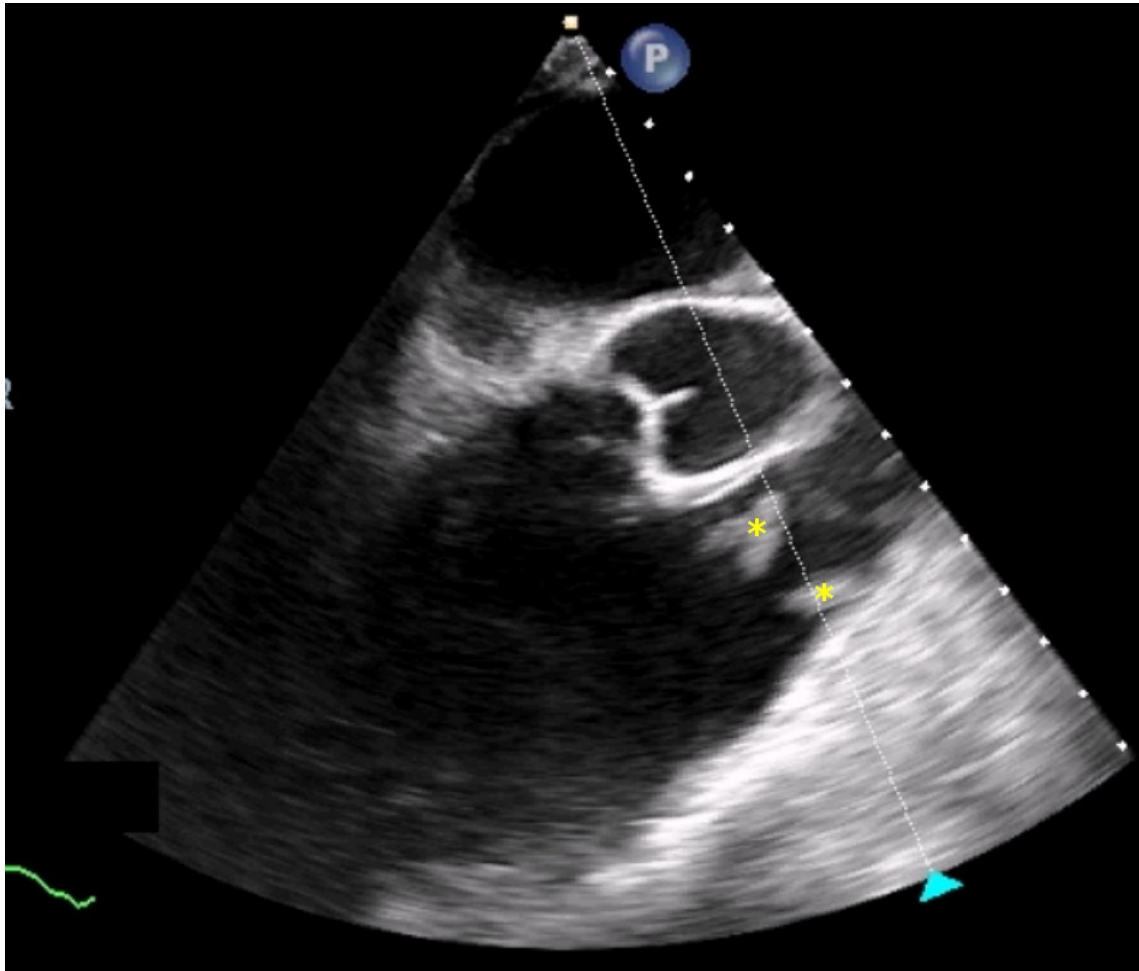
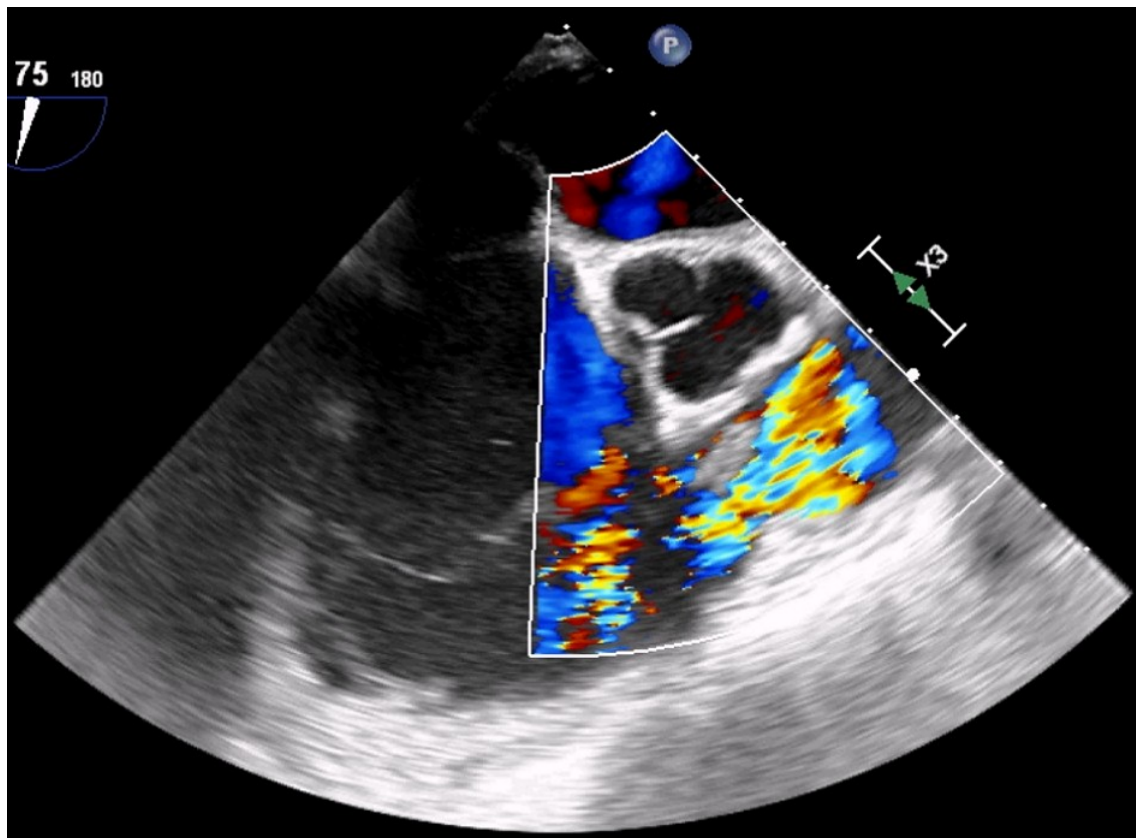


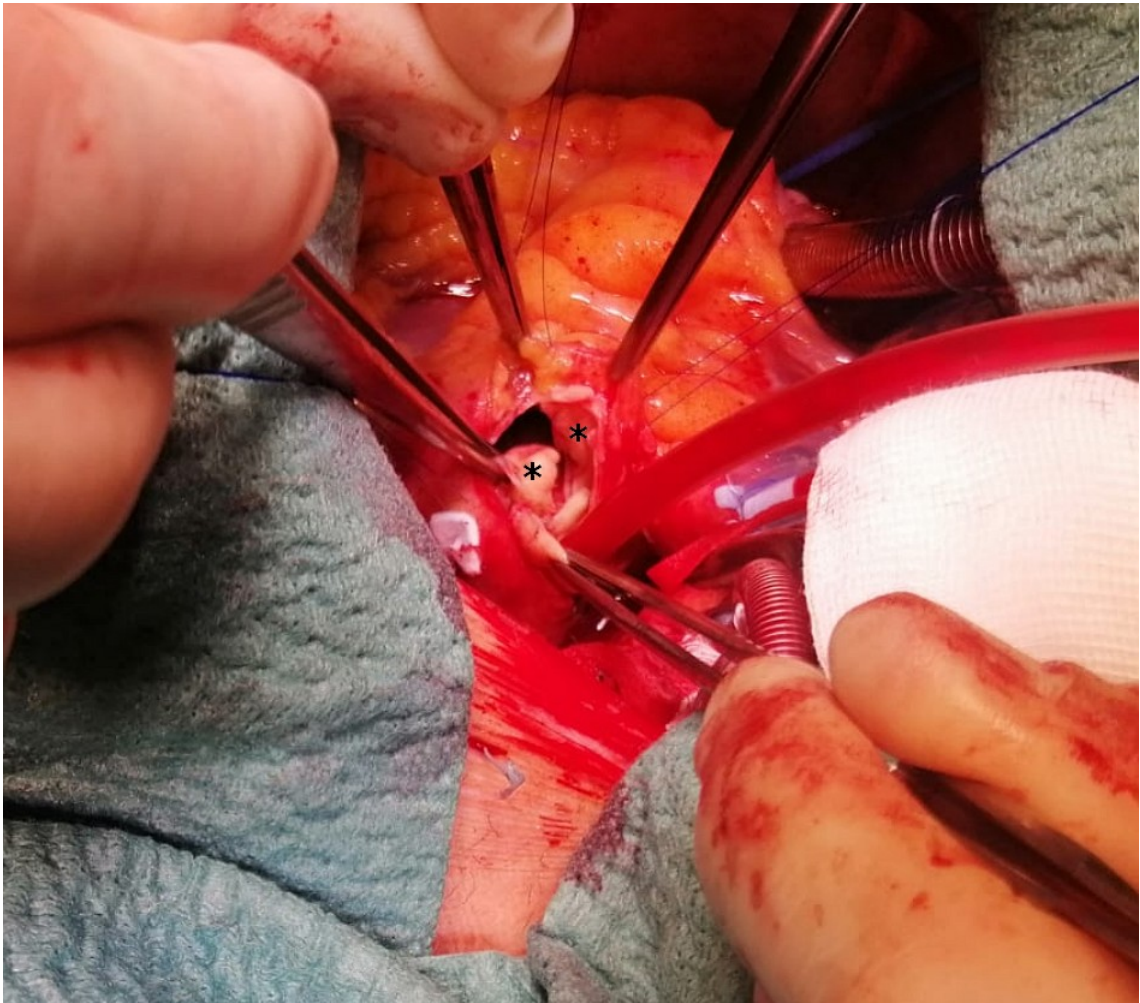
**Figure\_1.** Chest X-ray showing images suggestive of pulmonary septic embolisms (\*).



**Figure\_2.** TEE showing pulmonary valve large vegetations (\*).

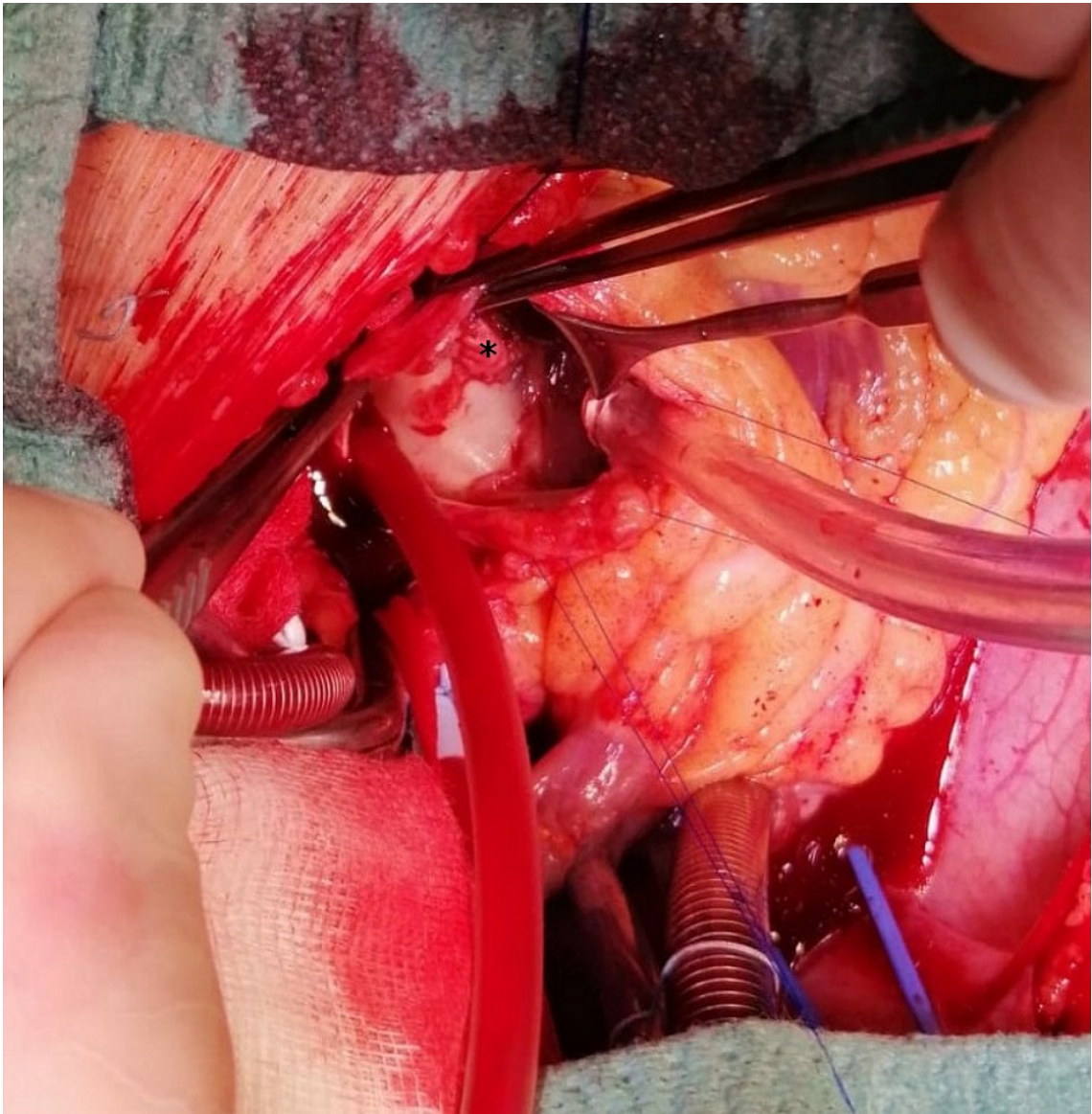


**Figure\_3.** TEE showing severe pulmonary valve regurgitation.

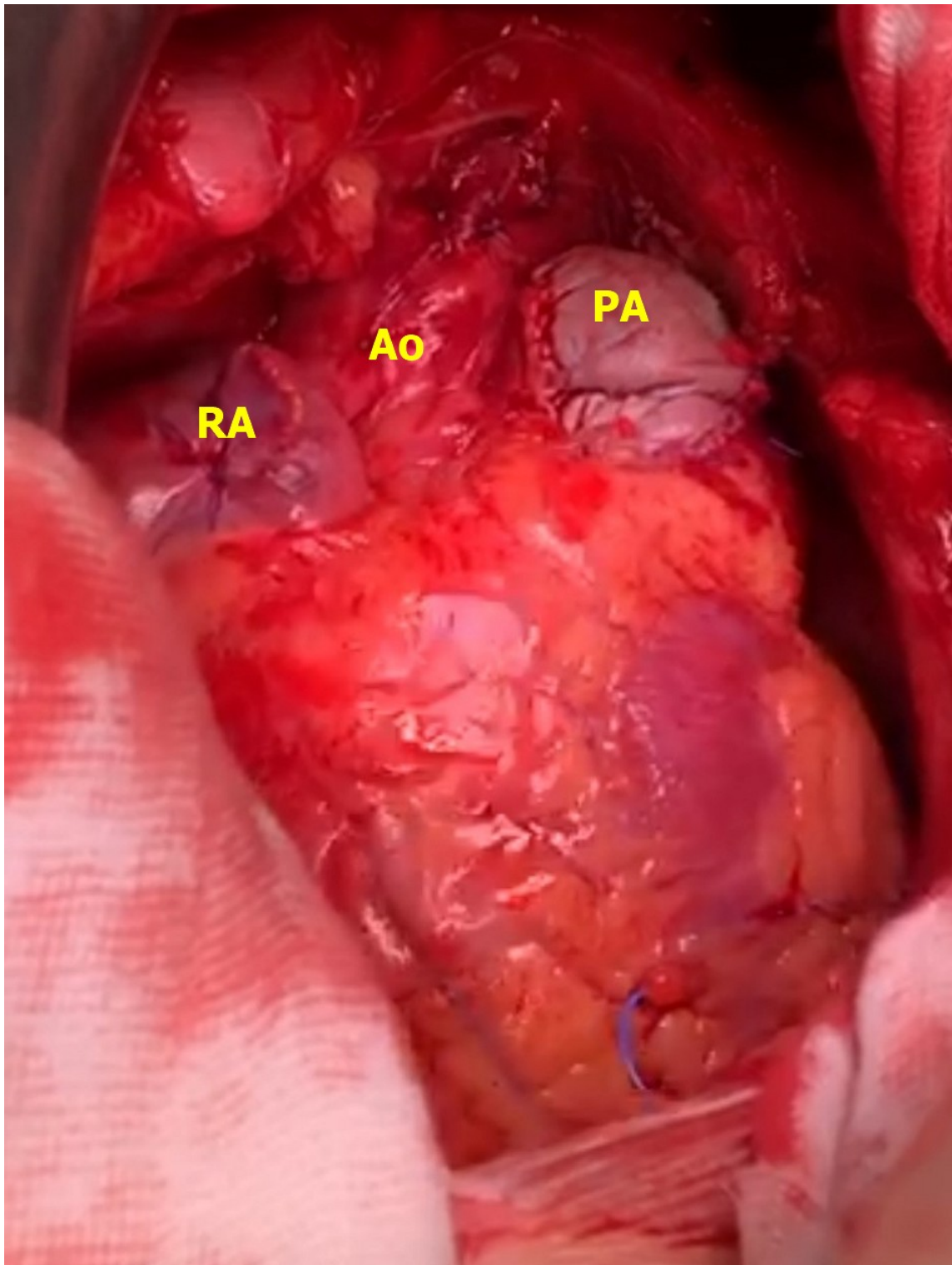


**Figure\_4.** Pulmonary valve affected by endocarditis (\*: vegetations).





**Figure\_5.** Pericardial patch closing the abscess (\*).



**Figure\_6.** Final result of the pulmonary artery pericardial patch. Ao, aorta; RA, right atrium; PA, reconstructed pulmonary artery.



**Figure\_7.** Chest CT showing pulmonary embolisms (\*).