



Figure (1):- (A) Endoscopic vein harvesting. The greater saphenous vein is identified through a 2-3 cm incision near the knee and isolated with a vessel loop.



Figure (1):- (B) Dissection of the vein from the surrounding subcutaneous tissue by dissector and CO2 insufflation.



Figure (1):- (C) All side branches of GSV are identified coagulated using diathermy and transected.



Figure (2):- The finally, 30 cm of vein harvested through a 2-3 cm incision near the knee and a 3-mm counter incision in the groin.

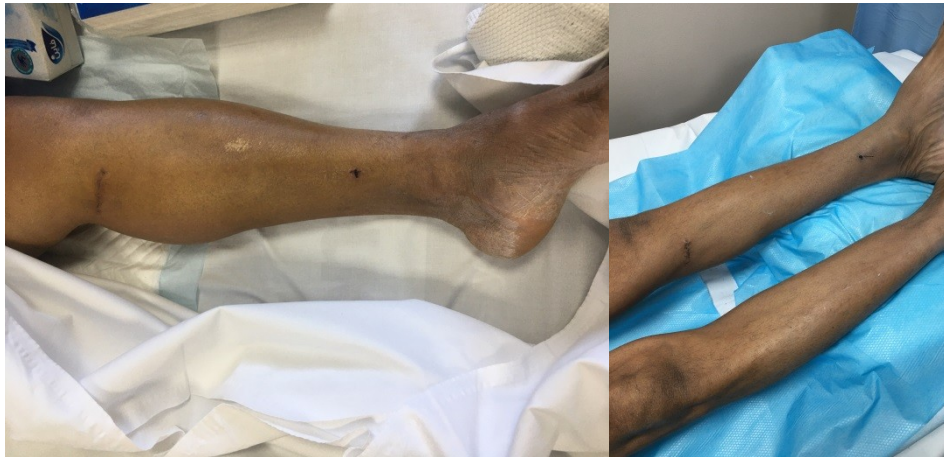


Figure (3):- Postoperative leg wound in EVH group



Figure (4):- Open Vein Harvesting technique with long incision.