

Bone marrow aspirate shows few tiny particles with hypocellular smear and markedly decreased trilineage hematopoiesis, many scattered lymphocytes and relatively increased plasma cells (28%) with no increase in blasts. Bone marrow biopsy shows pronounced hypocellularity (5%-15%) with a remarkably decreased trilineage hematopoiesis and a relative increase in plasma cells (scattered and in clusters comprising a mix of kappa and lambda light chain expressing cells).

Flow cytometry on bone marrow aspirate shows approximately 50% T-cells, 3% B-cells, and increased plasma cells (15%) with no immunophenotypic evidence of monoclonal B-cell or plasma cell populations.

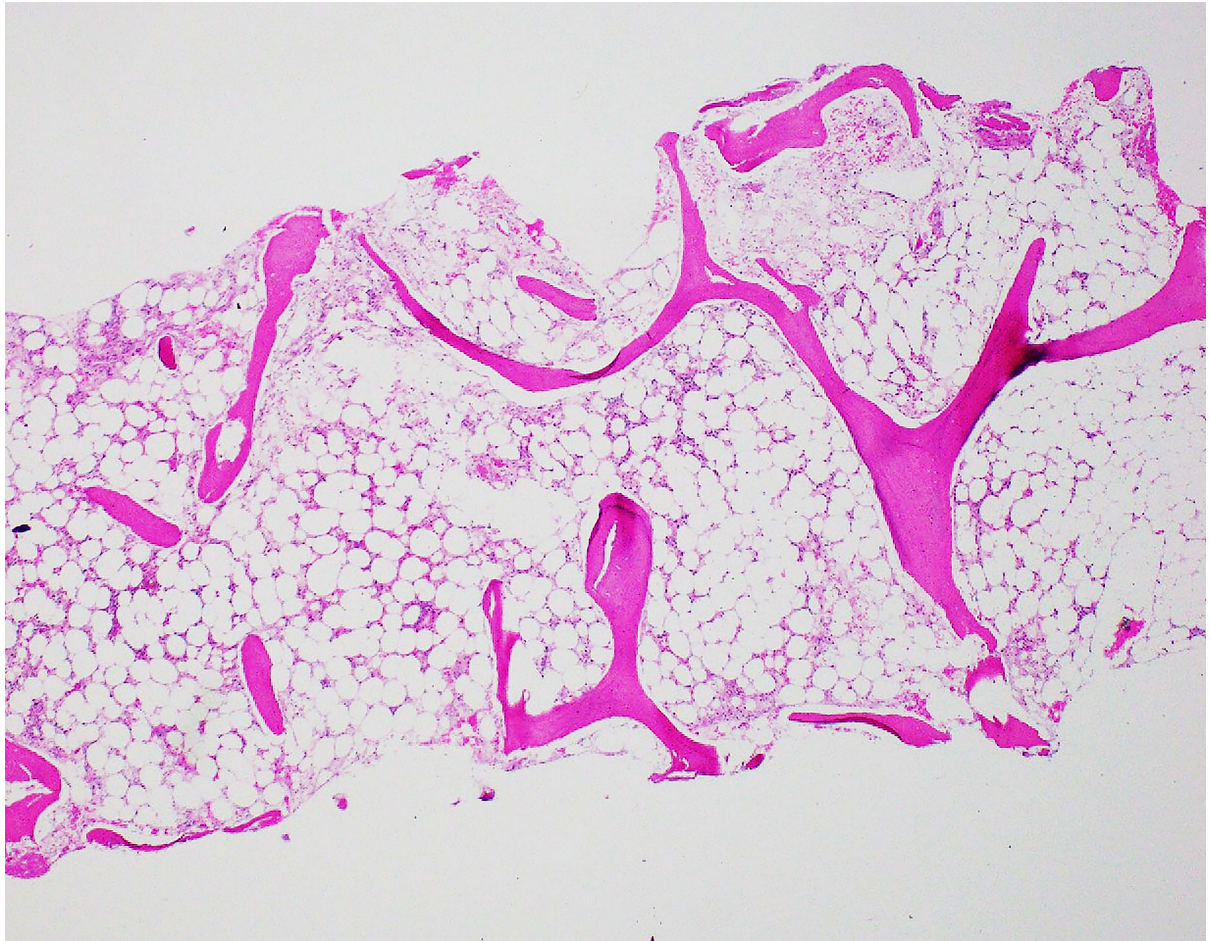


Fig 2. Section of bone marrow trephine biopsy showing marked hypocellularity. Many of the remaining cells are plasma cells. H & E, 4x