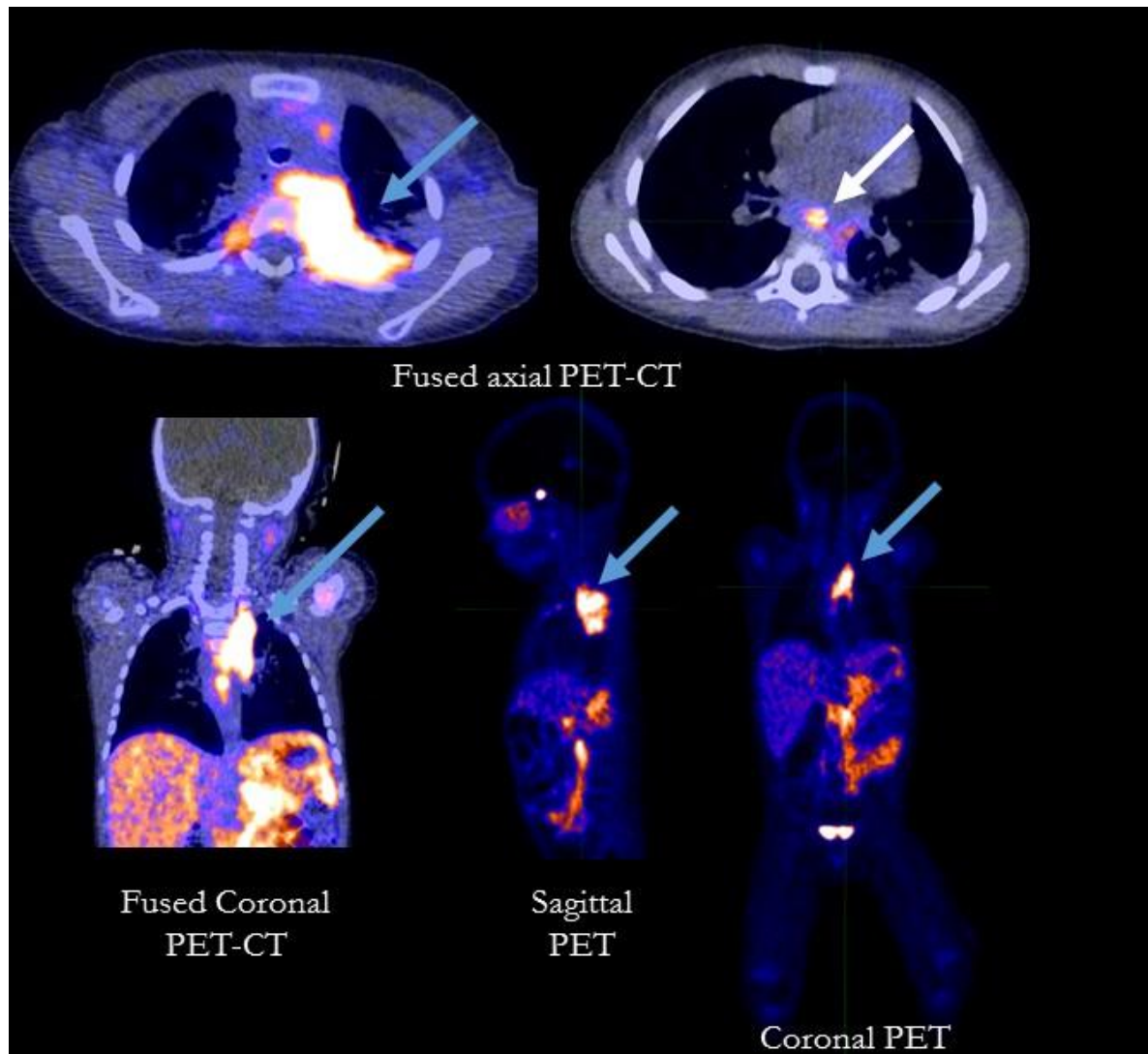


Figure 1. Selected representative images of  $^{68}\text{Ga}$ -DOTATATE PET/CT for Patient 1



Increased uptake in a left sided paravertebral mass and invading the spinal canal and adjacent vertebral body of T3 (blue arrow). Additional lesions are clearly identified in the right paravertebral space of T3 and in the posterior mediastinum (white arrow).