

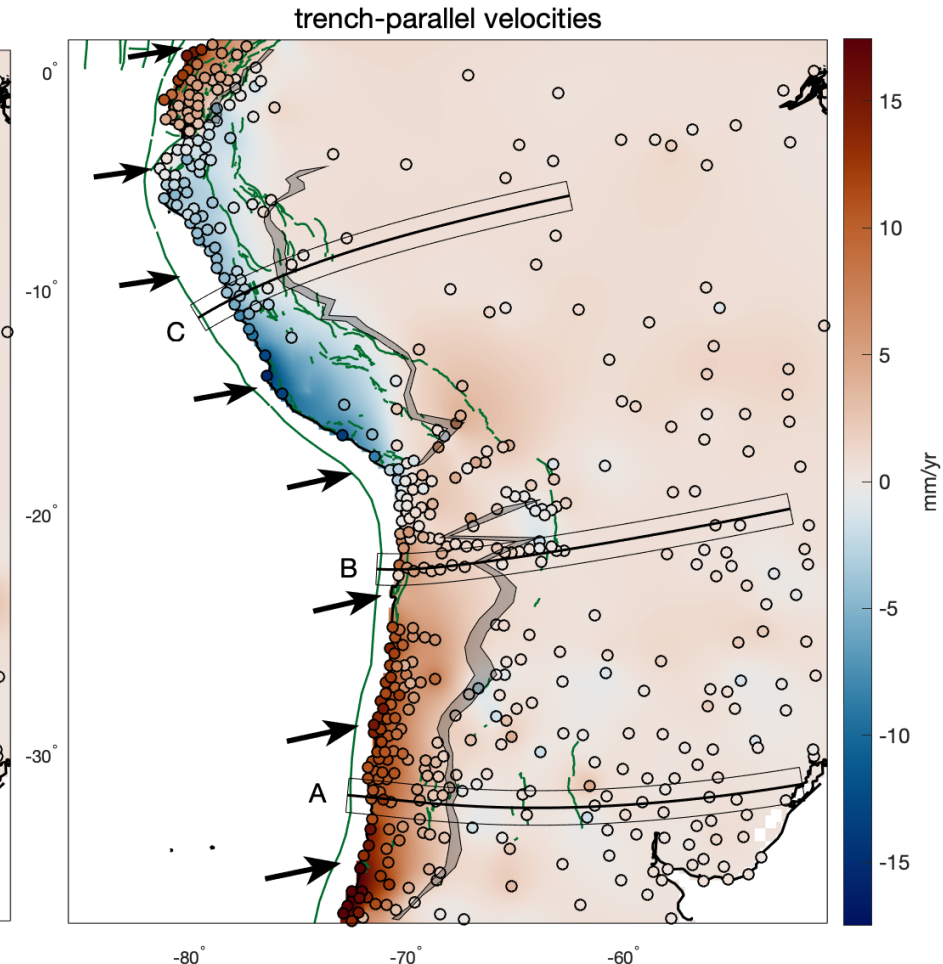
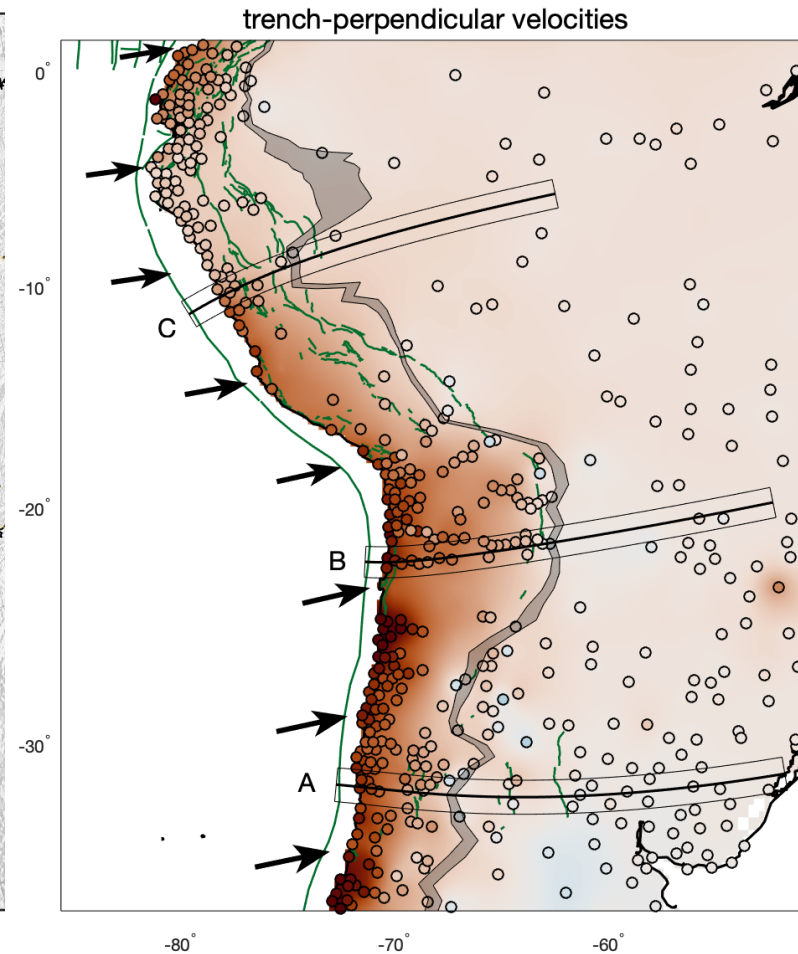
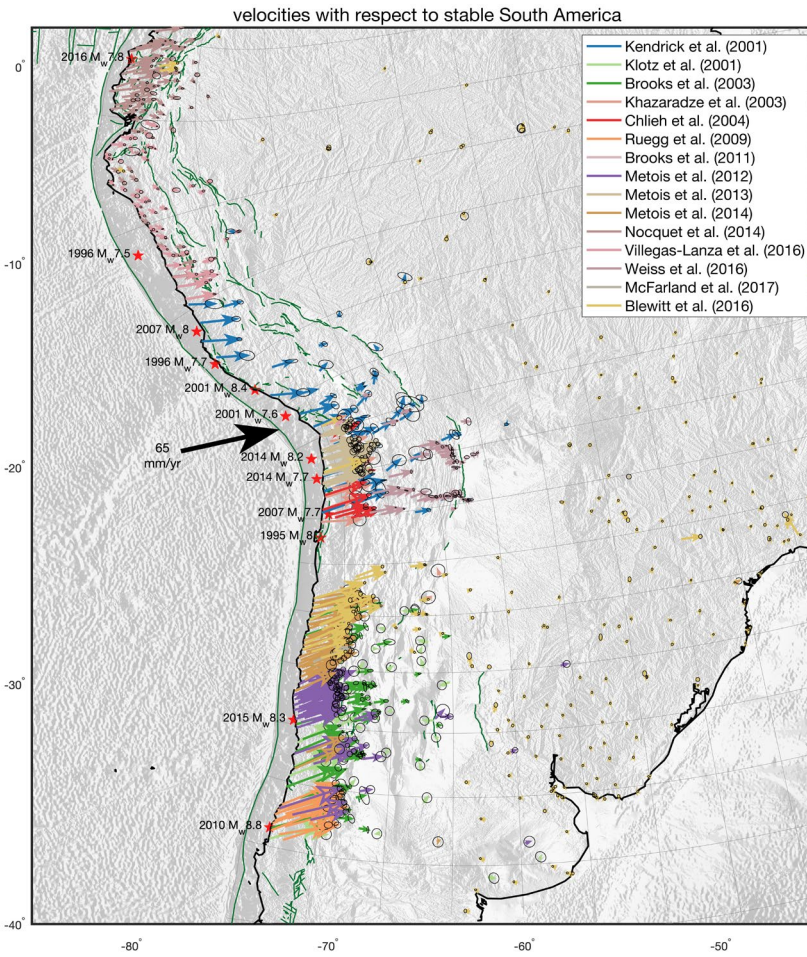
Why is interseismic shortening of the overriding plate largely restricted to the near-trench region?

Mario D'Acquisto*, Taco Broerse, Celine Marsman, Rob Govers

*m.dacquisto@uu.nl

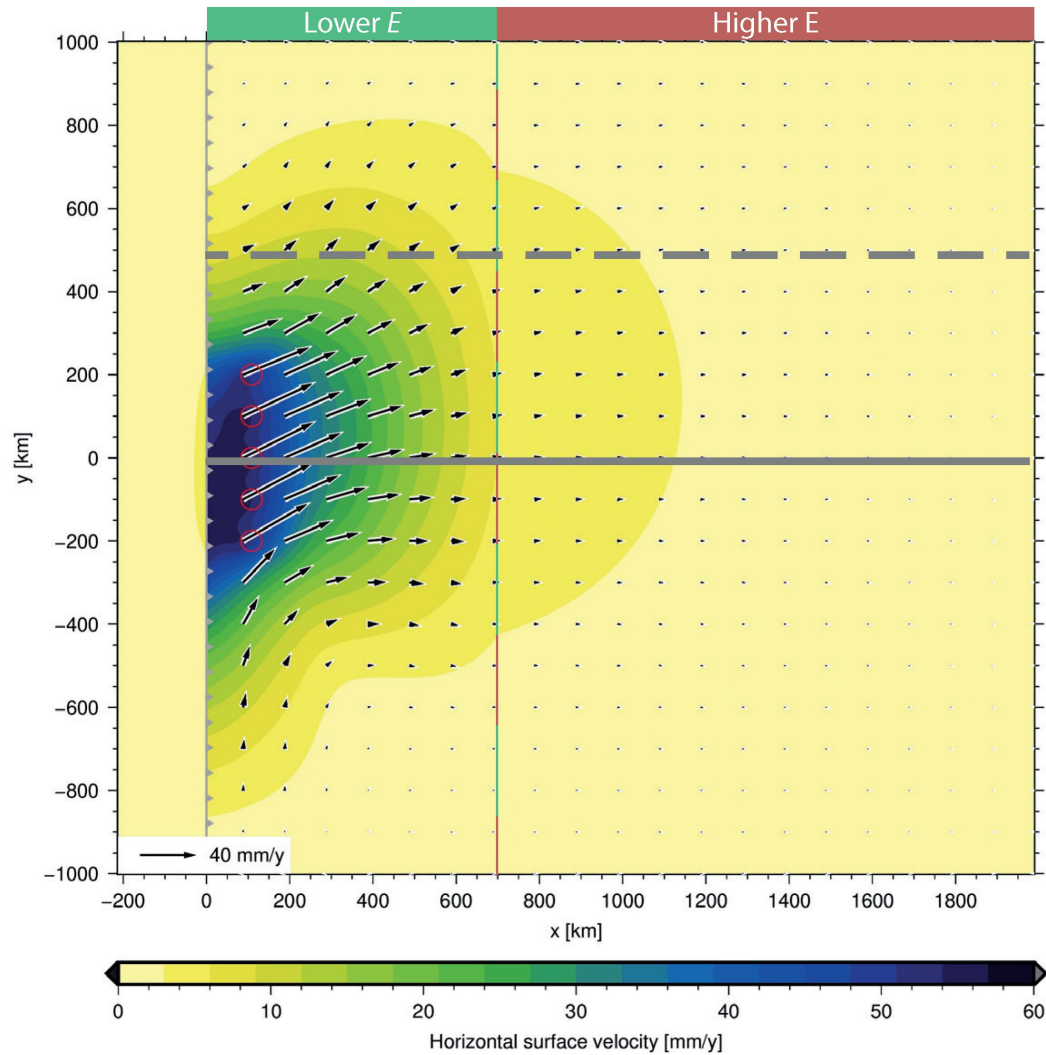


Observations: interseismic velocities in the overriding plate focus between trench and *hurdle* (beyond which coseismic displacement is observed).

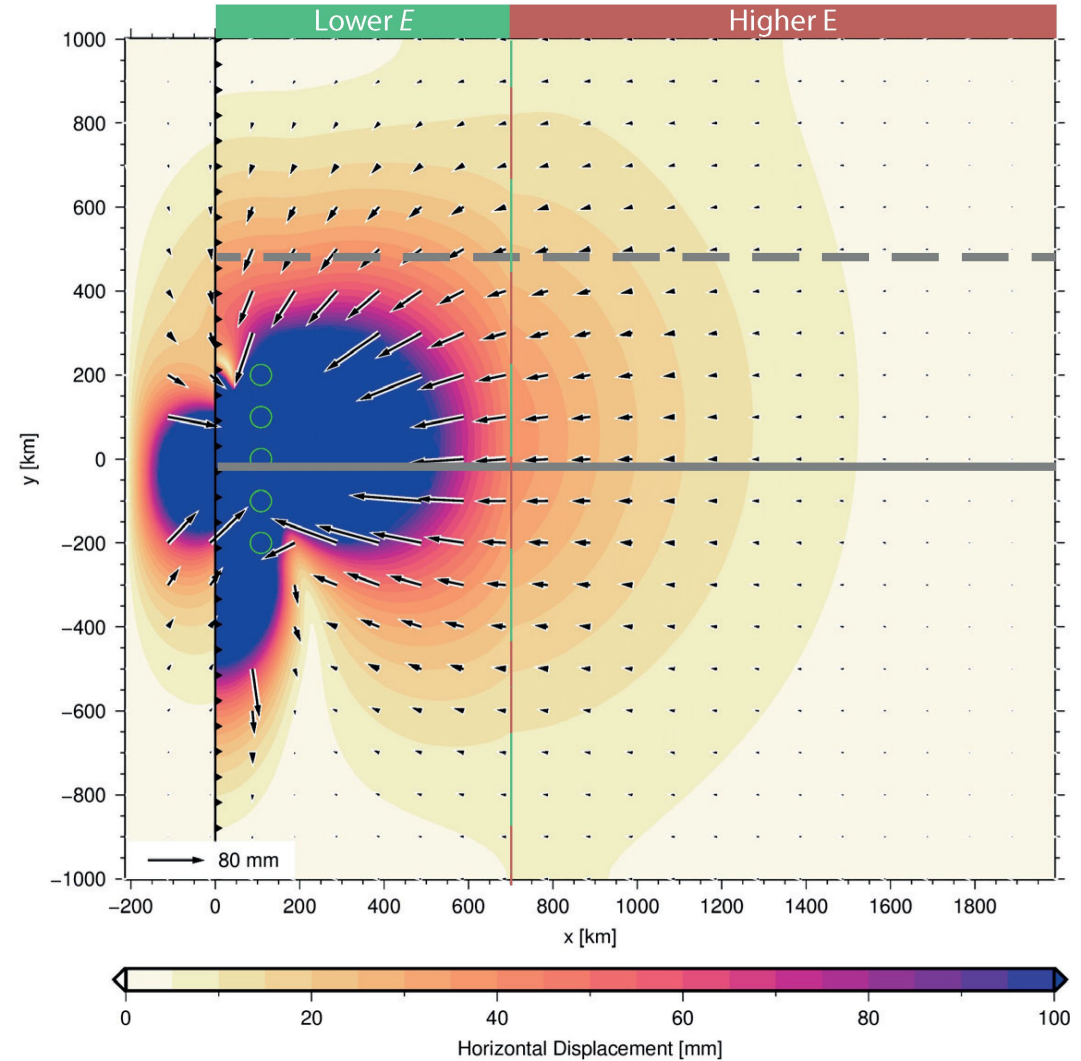


Reference model results

Interseismic surface velocity

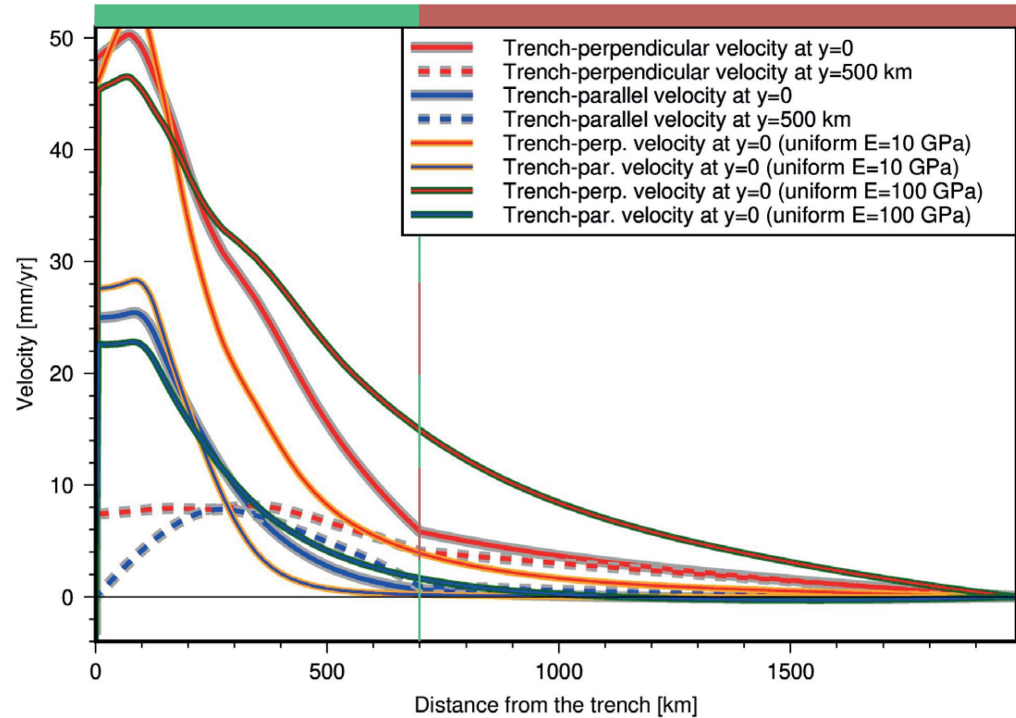


Coseismic surface displacement

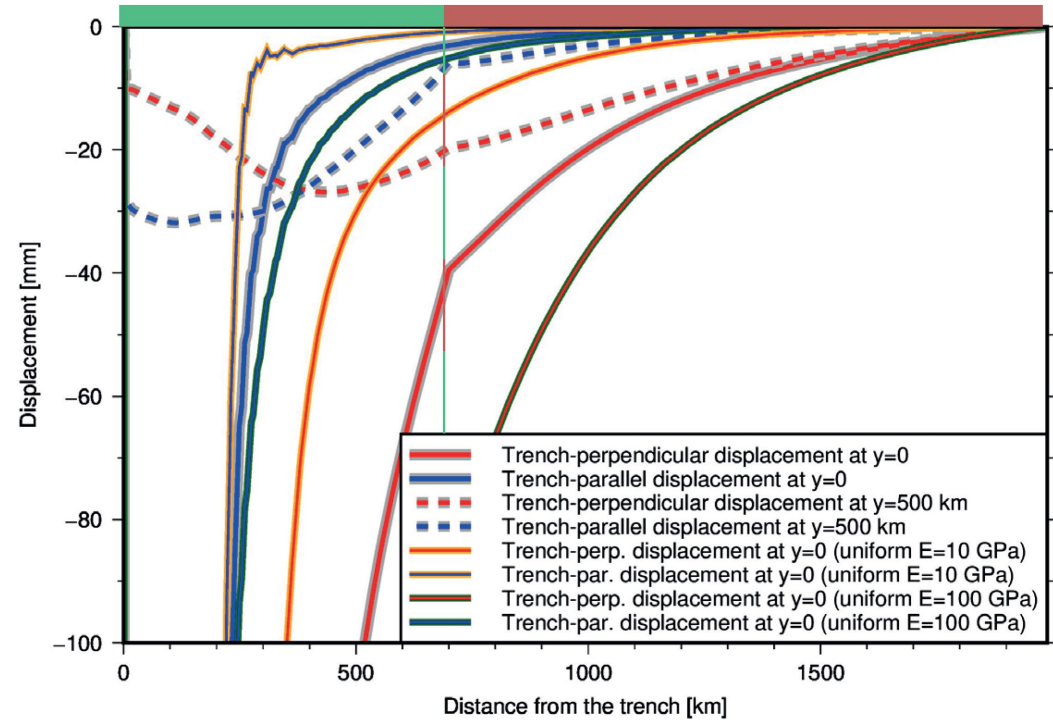


Reference model results and comparison with uniform overriding plates

Interseismic surface velocity profiles



Coseismic surface displacement profiles





**Utrecht
University**

Sharing science,
shaping tomorrow

View our presentation
and talk to me for sensitivity study,
discussion and implications
Thank you