

Figures

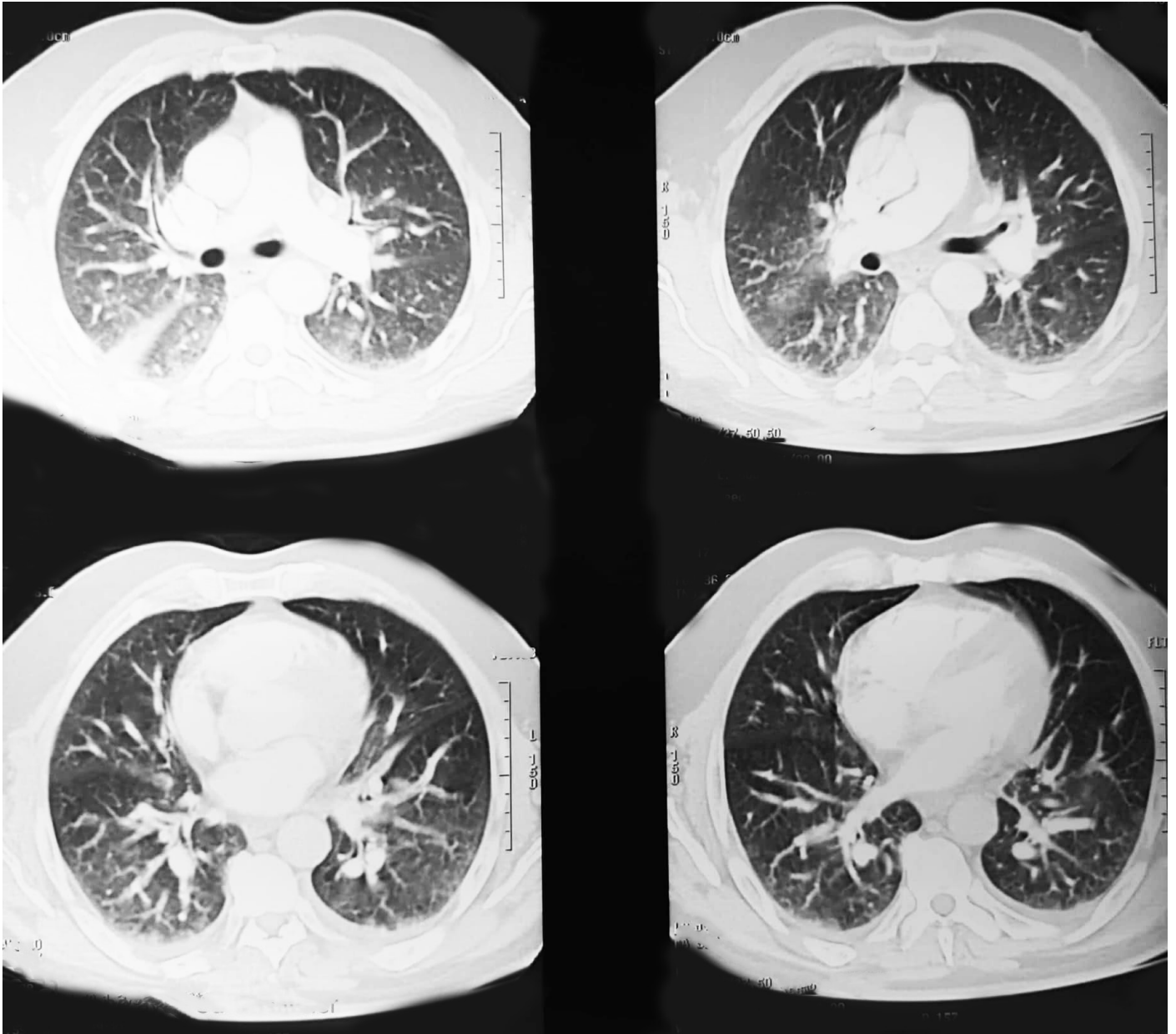


Figure 1. CT chest angiography (showing bilateral condensation with pleural effusion, without any sign of acute pulmonary embolism)

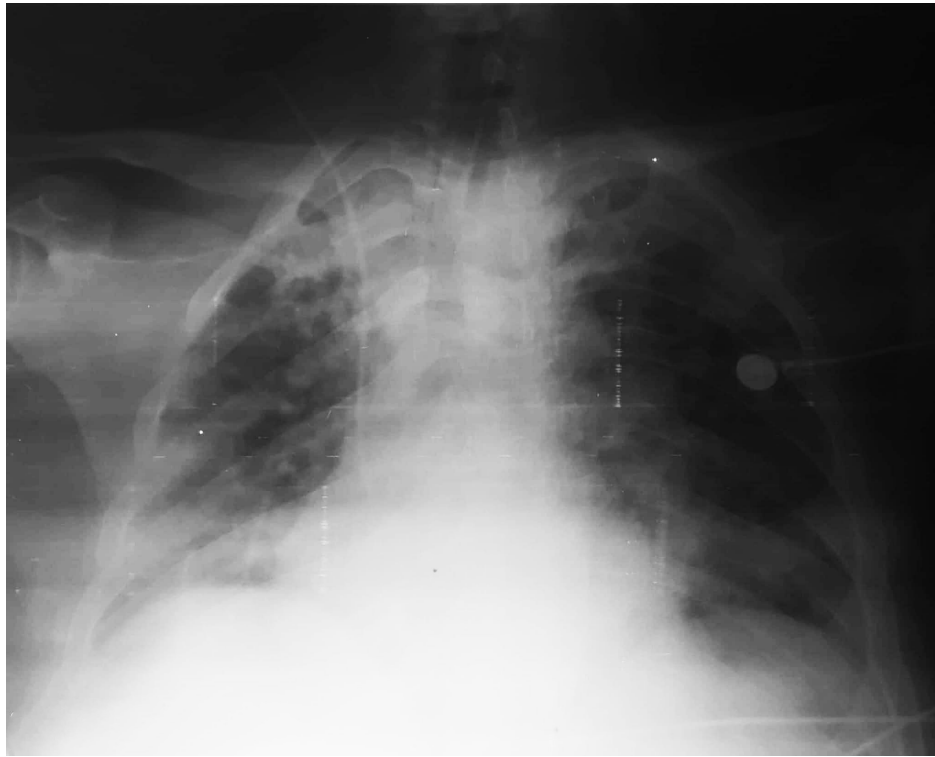


Figure 2: Chest radiography (showing bilateral infiltrates)



Figure 3. Mi esophageal 4-chamber view (revealing a dilated right ventricle, bowing of the intraventricular septum, a dilated right atrium, bowing of the intra-atrial septum)

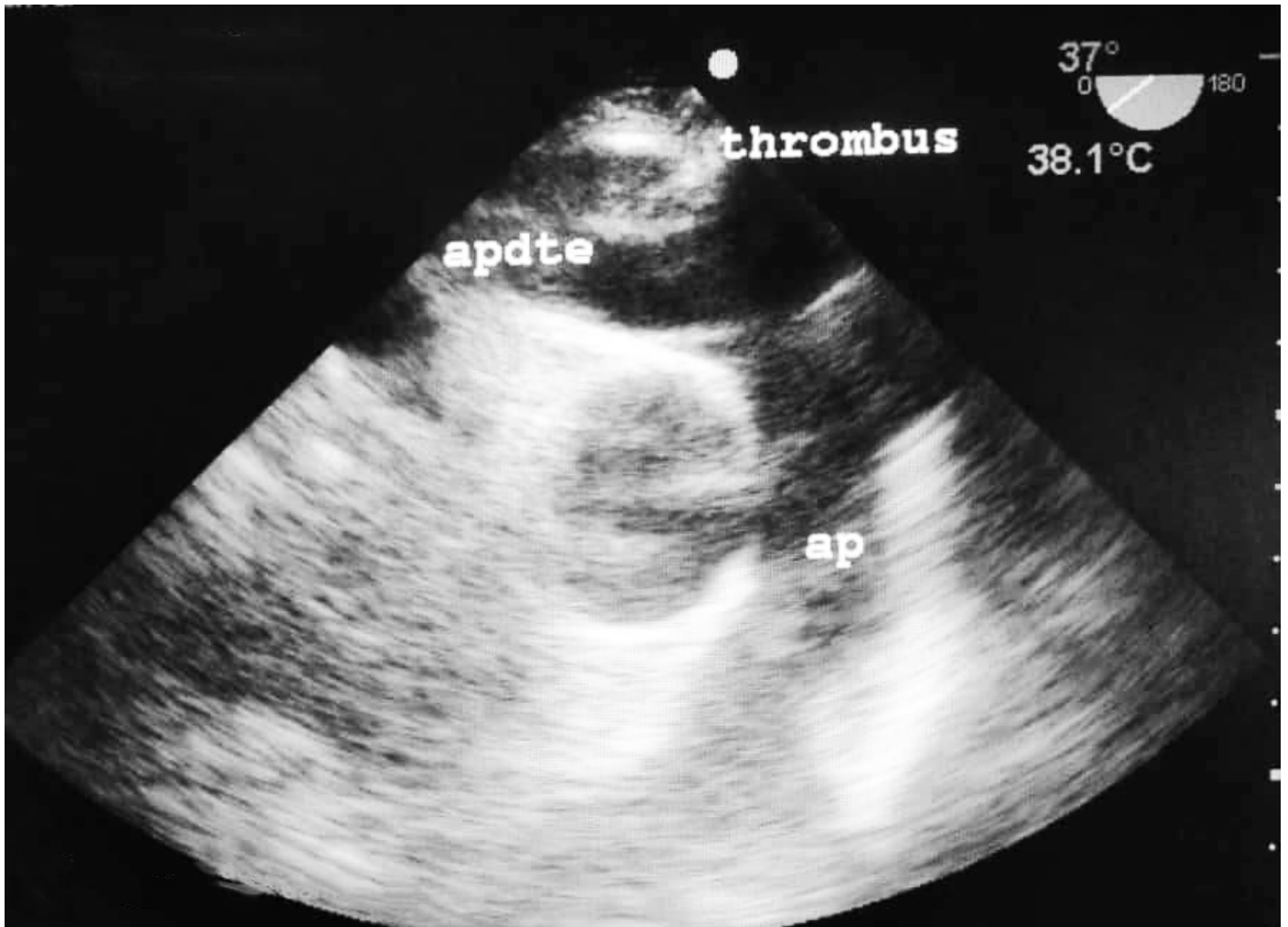


Figure 4. High esophageal view (showing thrombus in a dilated right pulmonary artery, apdte: right proximal pulmonary artery, ap: pulmonary artery)