

The prognostic significance of preoperative CA-125 levels in uterine papillary serous carcinomas

ilker cakir¹, Volkan Karataşlı², Varol Gülseren³, Duygu Ayaz⁴, Behzat Can², Zübeyde Emiralioglu Çakır⁴, goksen gorgulu², oguzhan kuru², Muzaffer Sancı⁴, and mehmet gokcu²

¹Buca Seyfi Demirsoy Education and Research Hospital

²Affiliation not available

³Erciyes Universitesi

⁴Izmir Tepecik Training and Research Hospital

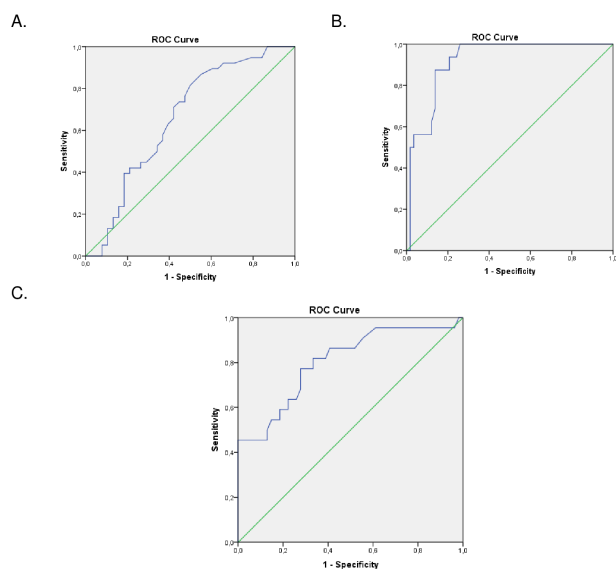
March 07, 2024

Abstract

Aim: This study aimed to determine the relationship between preoperative cancer antigen(CA) 125 levels and clinicopathologic prognostic factors as well as appropriate cut-off levels for pure uterine papillary serous carcinoma (UPSC). **Methods:** Study data were collected from the documents and electronic medical records of patients who were diagnosed with pure UPSC between 2005 and 2020 in our institution. The association between clinicopathological variables and CA-125 were analyzed. The accuracy of the preoperative serum CA125 value in predicting metastasis sites was evaluated by the receiving operating characteristic (ROC) curve analysis and the most appropriate cut-off values available were selected. **Results:** Seventy-eight patients met the study criteria. Median value of preoperative serum CA-125 level was higher in patients with omental($p < 0.001$), ovarian($p < 0.001$), cervical involvement ($p = 0.017$) and deep myometrial invasion($[?]50\%$) ($p = 0.001$). According to the ROC curve, the optimal cut-off value of preoperative CA125 level for predicting omental involvement was 35.5 U/mL (sensitivity: 93.8%, specificity: 79.3%), cervical involvement was 15.0 U/mL (sensitivity: 86.8%, specificity: 44.7%) and ovarian involvement was 32.5 U/mL (sensitivity: 77.3%, specificity: 72.2%). **Conclusion:** An elevated level of preoperative serum CA-125 is a marker for omental, ovarian, cervical involvement and deep myometrial invasion. There is a need for future studies to evaluate the role of CA-125 in predicting recurrence and survival in UPSC. **Key Words:** Cervical involvement, Cutoff value, Preoperative CA-125, Uterine papillary serous carcinoma

Hosted file

uterine papillary serous carcinomas.docx available at <https://authorea.com/users/411298/articles/710888-the-prognostic-significance-of-preoperative-ca-125-levels-in-uterine-papillary-serous-carcinomas>



Hosted file

Tables.docx available at <https://authorea.com/users/411298/articles/710888-the-prognostic-significance-of-preoperative-ca-125-levels-in-uterine-papillary-serous-carcinomas>