

# Estimation of Vs30 at the EarthScope Transportable Array Stations by Inversion of Low-Frequency Seismic Noise

Jiong Wang<sup>1</sup> and Toshiro Tanimoto<sup>2</sup>

<sup>1</sup>University of Chicago

<sup>2</sup>University of California, Santa Barbara

November 23, 2022

## Abstract

One of the main sources of seismic noise below 0.05 Hz is the atmospheric pressure variation, especially when surface pressure variations are large. The amount of ground deformation under surface pressure variations reflects the characteristics of shallow elastic structure. When a surface broadband seismic stations is equipped with a pressure sensor, we can estimate near-surface shear-modulus structure using an inversion method. In the inversion method, we have the surface observable  $\eta(f) = S_z/S_p$ , where  $f$  is a frequency between 0.01 and 0.05 Hz, and  $S_z$  and  $S_p$  are the power spectral densities of vertical seismic data and of surface pressure data. We derive depth sensitivity kernels for  $\eta(f)$  with which we invert for elastic moduli of the shallow structure. Between 0.01 and 0.05 Hz, sensitivity kernels typically have peaks at depths within the uppermost 100 meters. Based on vertically heterogeneous 1-D structures, we estimate Vs30 at 744 USArray Transportable Array stations. Vs30 is the time-averaged shear-wave velocity from the surface to the 30-meters depth. We compare our results with various surficial geology maps. Although Vs30 has high horizontal variability over a short distance on the scale of hundreds of meters, we find correlations between Vs30 and large-scale geological structures, such as mapped units and surficial materials. We find good agreement between estimated Vs30 and mapped Quaternary sediment depths, where stations with thicker underlying sediment tend to have slower Vs30.



*Journal of Geophysical Research: Solid Earth*

Supporting Information for

**Estimation of Vs30 at the EarthScope Transportable Array Stations by Inversion of Low-Frequency Seismic Noise**

J. Wang<sup>1+</sup> and T. Tanimoto<sup>1</sup>

<sup>1</sup>Department of Earth Science and Earth Research Institute, University of California, Santa Barbara, CA, 93106.

Corresponding author: Jiong Wang (jiongwang@ucsb.edu)

**Contents of this file**

Tables S1

## Introduction

This supporting information document includes one table. The table includes estimated Vs30 values at 744 Transportable Array stations, which are reported in the manuscript. The table is included as a separate file due to its length.

## Table S1. Estimated Vs30 at 744 TA stations.

### Hosted file

essoar.10508496.1.docx available at <https://authorea.com/users/546322/articles/602348-estimation-of-vs30-at-the-earthscope-transportable-array-stations-by-inversion-of-low-frequency-seismic-noise>

# Estimation of Vs30 at the EarthScope Transportable Array Stations by Inversion of Low-Frequency Seismic Noise

J. Wang<sup>1†</sup> and T. Tanimoto<sup>1</sup>

<sup>1</sup>Department of Earth Science and Earth Research Institute, University of California, Santa Barbara, CA, 93106.

Corresponding author: Jiong Wang (jiongwang@ucsb.edu)

Key Points:

- Inversion of low-frequency seismic noise generated by pressure variations provides estimates of Vs30.
- Our results provide Vs30 estimates at 744 TA stations for near-surface structure.
- The inversion procedure can be widely applied to seismic stations with collocated pressure data.
- 

Abstract

One of the main sources of seismic noise below 0.05 Hz is the atmospheric pressure variation, especially when surface pressure variations are large. The amount of ground deformation under surface pressure variations reflects the characteristics of shallow elastic structure. When a surface broadband seismic stations is equipped with a pressure sensor, we can estimate near-surface shear-modulus structure using an inversion method.

In the inversion method, we have the surface observable  $f = S_z/S_p$ , where  $f$  is a frequency between 0.01 and 0.05 Hz, and  $S_z$  and  $S_p$  are the power spectral densities of vertical seismic data and of surface pressure data. We derive depth sensitivity kernels for  $f$  with which we invert for elastic moduli of the shallow structure. Between 0.01 and 0.05 Hz, sensitivity kernels typically have peaks at depths within the uppermost 100 meters. Based on vertically heterogeneous 1-D structures, we estimate Vs30 at 744 USArray Transportable Array stations. Vs30 is the time-averaged shear-wave velocity from the surface to the 30-meters depth. We compare our results with various surficial geology maps. Although Vs30 has high horizontal variability over a short distance on the scale of hundreds of meters, we find correlations between Vs30 and large-scale geological structures, such as mapped units and surficial materials. We find good agreement between estimated Vs30 and mapped Quaternary sediment depths, where stations with thicker underlying sediment tend to have slower Vs30.

Plain Language Summary

Elastic structure in the uppermost tens of meters can play a crucial role for estimating seismic hazards; however, such structure information is not easy to obtain. We developed an inversion method utilizing low-frequency seismic noise

generated by pressure changes at the surface and estimated near-surface elastic structures at 744 stations. Our results provide useful information for seismic hazard studies at these areas, and demonstrate a new and straightforward procedure for estimating near-surface structure.

## Introduction

The interaction between the atmosphere and the solid Earth through surface pressure variations can be quantified by analyzing low-frequency seismic data with collocated pressure data, particularly data in the frequency band between 0.01 and 0.05 Hz (e.g., Sorrells, 1971; Tanimoto and Wang, 2018). Sorrells (1971) proposed the theoretical framework where the excitation mechanism is wind-related pressure waves that move along the surface and cause ground deformation recorded by broadband seismic sensors. Similar principles are also applicable in ocean-bottom-seismometers compliance studies (Crawford et al, 1991) and in evaluating near-surface structure on Mars (Kenda et al., 2017). Expanding on the work of Sorrells (1971), we can use the ratios of collocated seismic and pressure data to estimate the subsurface elastic structure at collocated stations. Better understanding of near-surface structure is important for seismic site effects and ground motion prediction studies (e.g., Borchardt, 1994; Sánchez-Sesma and Crouse, 2015; Trifunac, 2016). The procedure for retrieving half-space structure at fixed frequencies has been demonstrated and applied to estimate half-space structure at 784 USArray Transportable Array (hereafter TA) stations (Wang and Tanimoto, 2020).

Although the half-space approach provides estimates of near-surface structure in a straightforward manner, it lacks depth constraints that are essential for site effects parameters, such as Vs30. Vs30 is the time-averaged shear-wave velocity from the surface to 30 meters below, and it is one of the primary quantities for ground motion prediction studies (e.g., Dobry et al, 2000). In order to estimate Vs30 for a layered structure beneath a station, we developed an inversion approach by inverting data between 0.01 and 0.05 Hz (hereafter referred to as “the inversion method”) (Tanimoto and Wang, 2019). Near-surface elastic structures estimated from the inversion method have been corroborated by comparing with measured Vs30 (Yong et al, 2013) at collocated stations within the Piñon Flat Observatory (Tanimoto and Wang, 2020).

There are other approaches to infer the near-surface structure. These include invasive field-methods such as drilling and sonic logging, noninvasive field-methods such as Multichannel Analysis of Surface Waves (MASW, Park et al, 1999) with geophone arrays, analysis of the particle motions of body waves (Park and Ishii, 2018), and unique deployments such as fiber-optic distributed acoustic sensing (e.g., Dou et al., 2017). Due to the scarcity of Vs30 profiles around the world, it is also common to infer Vs30 using large-scale proxies such as geology maps and topographic slopes (e.g., Park and Elrick, 1998; Wald and Allen, 2007). Other shallow-structure techniques such as H/V spectral ratios (HVSR, e.g., Naka-

mura, 1989) and similarly ZH ratios (e.g., Tanimoto and Rivera, 2008) typically resolve structures at depths measured in kilometers, which are not directly applicable for estimating Vs30. The inversion method presented here can be an addition to the field of seismic hazard studies.

We use the inversion method to estimate the layered structure and Vs30 at 744 TA stations. Our Vs30 results show good agreements with various large-scale surficial geology maps such as Quaternary sediment depths. We also find high degree of similarity between Vs30 and our previously estimated half-space Vs at 0.02 Hz (Wang and Tanimoto, 2020) after comparing results between the layered model and the half-space model. Although the inversion method provides depth constraint and an ability to estimate Vs30, the half-space approach (Tanimoto and Wang, 2018) is still useful because it is more straightforward to adopt and much less computationally expensive, while still gives robust estimates of near-surface structure comparable to Vs30 at certain frequencies.

We present the method and results in the following order; first we present our data with explanations of the quality-control criteria. Secondly, we describe our inversion method, with examples from two TA stations, 355A and I05D. Lastly, we present Vs30 results at 744 TA stations and compare our results with multiple geological maps.

## Data Analysis

### Data Preprocessing

The dataset comes from the TA stations for which high-quality pressure sensors were added since mid-2011 (Tytell et al., 2016). Broadband seismic stations typically do not have collocated pressure sensors. The lack of collocated seismic and pressure stations is partially the reason for a rather poor quantitative understanding of the land-atmosphere interaction despite early work on the topic (Sorrells, 1971; Sorrells et al., 1971). With the availability of hundreds of collocated TA stations, we now have an unprecedented amount of collocated data to study this phenomenon. Here, we analyze data at TA stations from Jan 1 2012 to Jan 1 2019. We analyzed 912 stations which cover most of the eastern US and Alaska. For each station, we use three surface seismic channels and one infrasound-sensor pressure channel. We used channels that had a sampling rate of 1.0 Hz. All seismic and pressure data are downloaded from the Incorporated Research Institutions for Seismology Data Management Center (IRIS DMC).

Each TA station typically operated for about two years with some backbone stations remained operational for longer periods. We analyze data for the entire duration of each station. We apply standard processing steps on raw time series to compute hourly power spectral densities (PSDs). The processing steps are similar to conventional procedure on analyzing seismic noise, for example McNamara and Buland (2004). For each one-hour time series, we detrend, apply a Hanning window, compute Fourier spectra, and then remove instrument

response (for ground velocity) in the frequency domain. Next, we compute PSDs for seismic and pressure data at frequencies from 0.01 to 0.05 Hz at an increment of 0.005 Hz. We compute hourly coherence between each individual seismic component with pressure. Coherence can be used as an effective indicator of time intervals when the ground is directly deforming due to surface pressure changes (Tanimoto and Wang, 2018). When coherence is high and pressure change is large, the coupling between the atmospheric pressure and the solid Earth is typically strong.

For each hour at each station, we obtain PSDs for three seismic components and the infrasound pressure component. We also compute seismic-pressure coherence for three pairs (each seismic component and the pressure as one pair). For each hour, there are seven quantities estimated at nine discrete frequencies from 0.01 to 0.05 Hz at a frequency interval of 0.005 Hz.

## Half-Space Structure

To prepare for the inversion method, we compute pressure-wave speed,  $c$ , and half-space modified shear-modulus,  $\bar{\mu}$ , which are used for the construction of starting models. We start the process with some data-culling steps to exclude time intervals when pressure and seismic data are badly correlated. Specifically, we include hourly horizontal PSDs when coherence between two horizontal seismic components and pressure are both higher than 0.7; we include hourly vertical seismic PSDs when coherence between the vertical seismic component and pressure, and coherence between one horizontal seismic component and pressure, are both higher than 0.7. We also impose a pressure threshold at 1 Pa<sup>2</sup>/Hz, i.e., we only include time intervals when hourly pressure PSDs are higher than 1 Pa<sup>2</sup>/Hz. Time intervals with large pressure variations tend to have stronger interaction between the pressure and ground. These coherence and pressure criteria are consistent with our previous practice in Wang and Tanimoto (2020). To better ensure the robustness of our analysis, we apply a 20% trimmed mean method (e.g., Wilcox, 2012) to exclude outliers. By definition, we exclude 20% of both ends of sorted coherent PSDs. The 20% trimmed mean method is shown to be appropriate and effective on excluding significant outliers that could have led to erroneous results (Wang and Tanimoto, 2020).

$$\frac{S_H(f)}{S_P(f)} = \frac{g^2}{4\mu^2\omega^2} \left( \frac{\lambda + 2\mu}{\lambda + \mu} \right)^2 \quad (1)$$

$$\frac{S_z(f)}{S_P(f)} = \frac{c^2}{4\mu^2} \left( \frac{\lambda + 2\mu}{\lambda + \mu} \right)^2 \quad (2)$$

$$\bar{\mu} = \mu \frac{\lambda + \mu}{\lambda + 2\mu} \quad (3)$$

With coherent PSDs of pressure and seismic data, pressure-wave speed and half-space structure can be calculated following Tanimoto and Wang (2018). On the left-hand side of equations (1) and (2),  $f$  is frequency;  $S_H(f)$  is PSD of horizontal seismic data, which is the sum of two horizontal seismic PSDs;  $S_Z(f)$  is PSD of vertical seismic data;  $S_P(f)$  is PSD of pressure data. On the right-hand side of equations (1) and (2),  $g$  is gravitational acceleration;  $\mu$  is shear-modulus;  $\omega$  is angular frequency;  $\lambda$  is Lamé's parameter;  $c$  is pressure-wave speed at the surface. We introduce an alternative quantity  $\bar{\mu}$  in equation (3), which we name “modified shear-modulus”.

From equations (1) to (3), we can calculate frequency-dependent pressure-wave speed and modified shear-modulus using hourly PSDs and coherence. These will be used in the inversion method to determine the layered structure from which we can get Vs30.

## Quality Control for the Inversion Method

As examples of our analysis, we show results from two stations: 355A and I05D. 355A is a TA station located near Pearson, GA. I05D is a TA station located near Terrebonne, OR. We analyze 21 months of data for 355A and 62 months of data for I05D. Figure 1 is pressure-seismic plots for 355A and I05D. I05D plots have more data points due to its longer duration. As illustrated in Figure 1, if we focus on green points, which are time intervals that pass coherence criterion and pressure threshold, there is clear correlation between pressure PSDs and seismic PSDs. Simply put, larger surface pressure variations lead to larger ground deformation, which is intuitive for the land-atmosphere interaction.

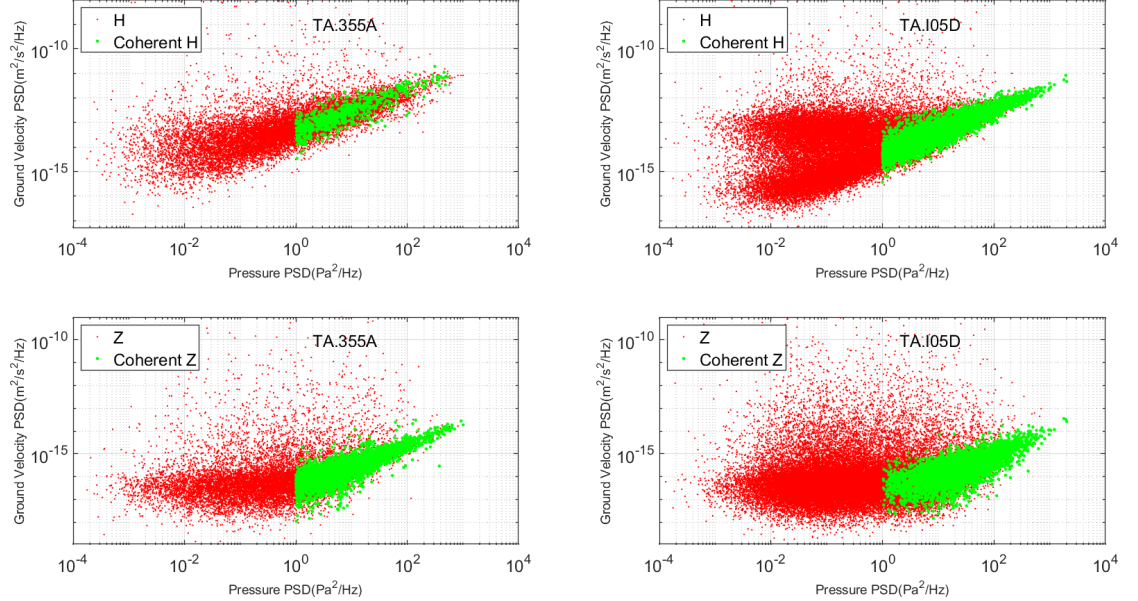


Figure 1. PSD plots of ground velocity vs pressure at 0.02 Hz for TA stations, 355A and I05D. Top panels show horizontal components; bottom panels show vertical components. Each point is an hourly PSD. Time intervals that are coherent with high pressure PSD are highlighted in green.

Tables 1 and 2 show summarized results for 355A and I05D. We create a data table for every TA station. We use the information in the table to determine whether a station is a good candidate for the inversion. We construct starting models for the inversion based on pressure-wave speed  $c$  and modified shear-modulus  $\bar{\mu}$  at discrete frequencies.

Frq(Hz)	kz	kh	ZP_ratio	$\Delta$ ZP_ratio	HP_ratio	$\Delta$ HP_ratio	$c$ (m/s)	$\Delta c$ (m/s)	$\bar{\mu}$ (Pa)
0.010	517	183	1.23E-17	5.54E-18	9.25E-14	3.82E-14	1.80E+00	5.50E-01	2.56E+03
0.015	2208	489	1.99E-17	6.54E-18	5.56E-14	1.70E-14	1.97E+00	4.42E-01	2.20E+03
0.020	3144	708	2.94E-17	9.53E-18	3.28E-14	9.16E-15	2.34E+00	5.00E-01	2.15E+03
0.025	3369	812	4.00E-17	1.12E-17	2.26E-14	5.49E-15	2.62E+00	4.86E-01	2.07E+03
0.030	2991	788	5.23E-17	1.57E-17	1.60E-14	4.08E-15	2.97E+00	5.86E-01	2.06E+03
0.035	2641	819	6.44E-17	1.90E-17	1.22E-14	3.00E-15	3.24E+00	6.24E-01	2.02E+03
0.040	2215	742	7.59E-17	2.65E-17	9.44E-15	2.15E-15	3.50E+00	7.28E-01	2.01E+03
0.045	1739	667	9.21E-17	2.93E-17	7.58E-15	1.66E-15	3.82E+00	7.38E-01	1.99E+03
0.050	1134	519	1.23E-16	4.54E-17	6.50E-15	1.73E-15	4.30E+00	9.76E-01	1.93E+03

Table 1. Data for 355A from 0.01 to 0.05 Hz. frq is each discrete frequency, kz is the number of vertical seismic PSDs that pass criteria, kh is the number of horizontal seismic PSDs that pass criteria, ZP\_ratio is averaged ratio of  $S_z/S_p$ ,  $\Delta$ ZP\_ratio is one standard deviation of ZP\_ratio, HP\_ratio is averaged ratio of  $S_H/S_p$ ,  $\Delta$ HP\_ratio is one standard deviation of HP\_ratio,  $c$  is pressure wave speed,  $\Delta c$  is one standard deviation of  $c$ ,  $\bar{\mu}$  is modified shear-modulus,  $\Delta\bar{\mu}$  is one standard deviation of modified shear-modulus.

Frq(Hz)	kz	kh	ZP_ratio	$\Delta$ ZP_ratio	HP_ratio	$\Delta$ HP_ratio	$c$ (m/s)	$\Delta c$ (m/s)	$\bar{\mu}$ (Pa)
0.010	682	4294	5.09E-18	2.80E-18	1.09E-14	2.81E-15	3.37E+00	1.02E+00	7.47E+03
0.015	2893	4707	7.68E-18	2.96E-18	6.11E-15	1.45E-15	3.69E+00	8.34E-01	6.65E+03
0.020	3988	4975	1.01E-17	4.24E-18	3.97E-15	1.02E-15	3.94E+00	9.65E-01	6.19E+03
0.025	4369	5343	1.21E-17	4.56E-18	2.79E-15	6.53E-16	4.11E+00	9.11E-01	5.90E+03
0.030	4236	5257	1.36E-17	5.41E-18	2.05E-15	5.08E-16	4.23E+00	9.92E-01	5.74E+03
0.035	3782	5198	1.59E-17	5.88E-18	1.59E-15	3.70E-16	4.46E+00	9.70E-01	5.58E+03
0.040	3151	4717	1.77E-17	7.13E-18	1.26E-15	2.96E-16	4.62E+00	1.08E+00	5.49E+03

Table 2. Data for I05D from 0.01 to 0.04 Hz. All fields are the same as Table 1.

“kh” and “kz” fields in Tables 1 and 2 are numbers of one-hour coherent and high-pressure time intervals for the entire duration of two stations for both hor-



horizontal and vertical components. The remaining columns are computed using equations (1) – (3) with a 20% trimmed mean approach (e.g., Wilcox, 2012). Standard deviations are estimated from the distribution of coherent data segments (see green points in Figure 1). 355A and I05D both have large  $k_h$  and  $k_z$ , as illustrated in Figure 1. However, there are TA stations that have low  $k_h$  and  $k_z$ , which suggest very few time intervals have high seismic-pressure coherence. The lack of coherent time intervals at some stations is potentially related to environmental factors such as local microclimates or unique site conditions, where hard-rock sites may have little deformation under surface pressure changes (Wang and Tanimoto, 2020).

To ensure the robustness of the inversion, we impose two quality-control steps on all TA stations. First, a station will be included in the analysis only if it has five or more frequencies with both  $k_h$  and  $k_z$  larger than ten. With this constraint the number of stations was reduced to 754 from 912. Second, if a station is qualified by the first step, only those frequencies for which  $k_h$  and  $k_z$  are greater than ten are included in the inversion. For example, if a station has large  $k_h$  and  $k_z$  from 0.01 to 0.04 Hz, but not at 0.045 Hz and 0.05 Hz, we will invert the structure to fit data only from 0.01 to 0.04 Hz. We run the inversion algorithm at 754 qualified stations and eventually obtain stable results at 744 stations.

## Inversion Method and Examples

Here we briefly summarize steps in the inversion method to provide context for the rest of the paper. More detailed background theory and derivation can be found in Tanimoto and Wang (2019). In the inversion method, the fundamental idea is to construct a starting model (layered structure), perturb and update this model to fit data at multiple frequencies from 0.01 to 0.05 Hz. Specifically, we aim to fit surface observable  $(f)$ , which we define as the following.

$$(f) = \frac{S_z(f)}{S_p(f)} \quad (4)$$

$\eta(f)$  is the ratio between vertical seismic and pressure PSDs at discrete frequencies; it is “ZP\_ratio” in Tables 1 and 2. Pressure-wave speed can be estimated using equations (1) and (2), and it is typically around 1-10 m/s, as shown in Tables 1 and 2. Notably, pressure-wave speed is much slower than seismic waves; this leads to the sensitivity at much shallower depths compared to traditional seismic methods at these low frequencies.  $(f)$  is frequency-dependent; fitting of  $(f)$  will provide constraints on the layered model.

Throughout this method section, we present examples of the inversion at TA stations 355A and I05D. Data from these two stations are illustrated in Figure 1; important values are tabulated in Tables 1 and 2.

## Inversion Method

We first construct starting models for each TA station by using half-space structure at different frequencies. From sensitivity kernels of shear-modulus, we find a crude empirical relationship between pressure-wave speed and peak-depth of kernels at different frequencies.

$$\mathbf{H}(f) \cong \frac{0.15 * c(f)}{f} \quad (5)$$

where  $H(f)$  is the peak depth of the shear-modulus kernel,  $c(f)$  is the pressure-wave speed and  $f$  is a frequency. We typically selected from 0.01 to 0.05 Hz but the exact range varied depending on the quality of data. After obtaining peak depths at each discrete frequency, we align the half-space elastic structure to the corresponding peak depths. We interpolate parameters between fixed peak depths from these discrete frequencies. For example, a station with pressure-wave speed of 5 m/s at 0.01 Hz will have its deepest  $H(f)$  at 75 meters (equation 5). Then we assign density,  $V_p$  and  $V_s$  converted from modified shear-modulus at 0.01 Hz to the depth of 75 meters in the starting model.  $V_s$  profiles shown as dashed lines in Figure 2 are starting models of 355A and I05D based on information from Tables 1 and 2.

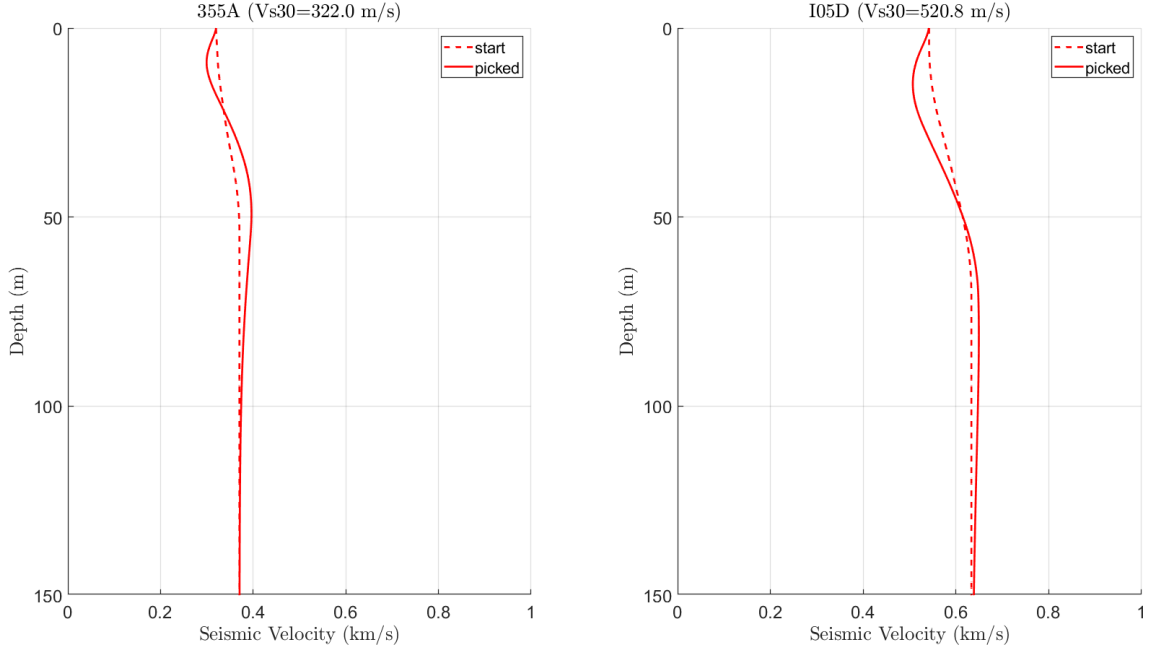


Figure 2. Starting and final  $V_s$  models at 355A and I05D.

In practice, this design of starting models works quite well with structures found by the inversion converging to the quantity  $\eta(f)$  quickly.

After setting up vertically heterogeneous starting models, we apply the inversion method following Tanimoto and Wang (2019). In the inversion method, we solve the seismic wave equations, specifically P-SV system of equations by numerical differentiation. There are four boundary conditions: pressure variations exerted at the surface, the vanishing of shear stress at the surface, and two finite radiation conditions at the top of the lowermost half-space layer (see equations 14-15 in Tanimoto and Wang, 2019).

In practice, we perturb and update layered models in each iterative step to fit the target quantity  $\eta(f)$ . Sensitivity kernels (Figure 3) are computed for each updated model and used to solve for perturbations of shear-modulus and bulk modulus. These perturbations are used to update the layered model.

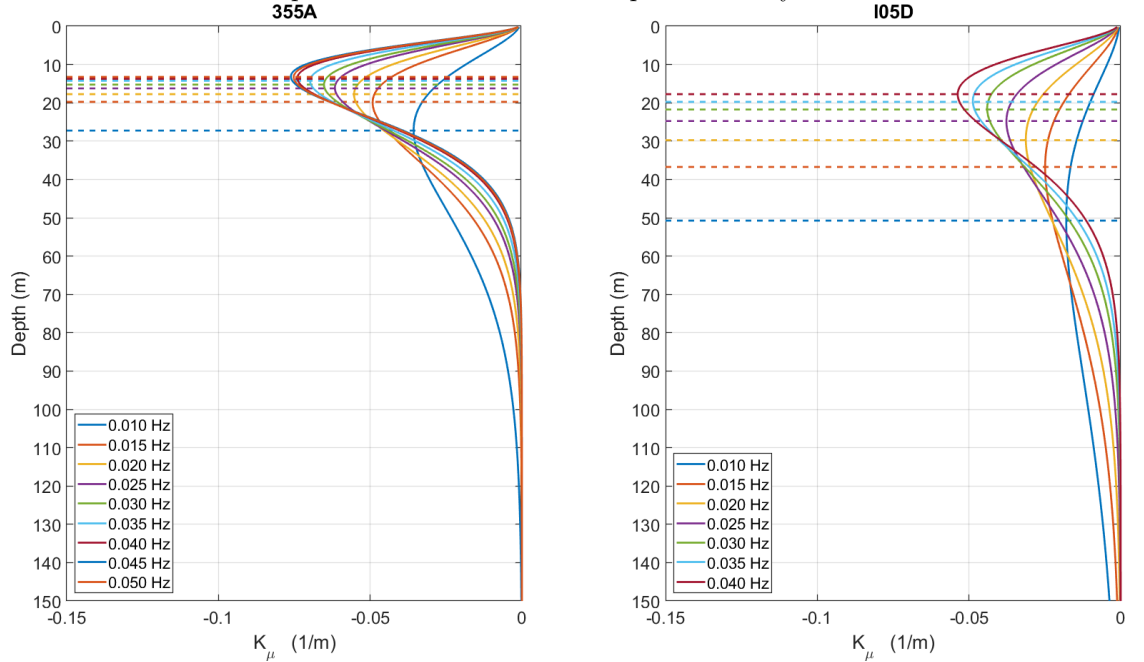


Figure 3. Sensitivity kernels of shear-modulus. Dashed lines demonstrate peak depths at all frequencies.

## Model Fit and Variance Reduction

With the inversion framework set up, we can start the numerical processing. In practice, at each TA station, we iterate the inversion nine times although an optimal model is typically found at earlier steps.

In Figure 4, we illustrate a theoretical  $\eta$  computed from each layered model with the starting model as the 0-th iteration. Theoretical  $\eta$  is compared with observed  $\eta$  listed in Tables 1 and 2. For 355A, the starting model fits the data well, whereas the starting model of I05D fits data less well but still within  $\pm 1$  of

the data. At both stations, the inversion converges in one or two iterations after which the models remain relatively constant. The upper frequency limit is 0.05 Hz for 355A and is 0.04 Hz for I05D. For all stations, we perform inversion up to 0.05 Hz and 0.04 Hz; then we visually inspect the goodness of fit for both cases. Typically, data near 0.05 Hz show more scatter and uncertainty, presumably because energy from the ocean waves starts to outweigh the effect of atmospheric pressure (e.g., Tanimoto and Wang, 2018). By examining sensitivity kernels (Figure 3) we note that peak depths for 0.04 and 0.05 Hz are very similar. We surmise that the choice on upper frequency limit between 0.04 Hz and 0.05 Hz has minor influence on the resulting layered structure.

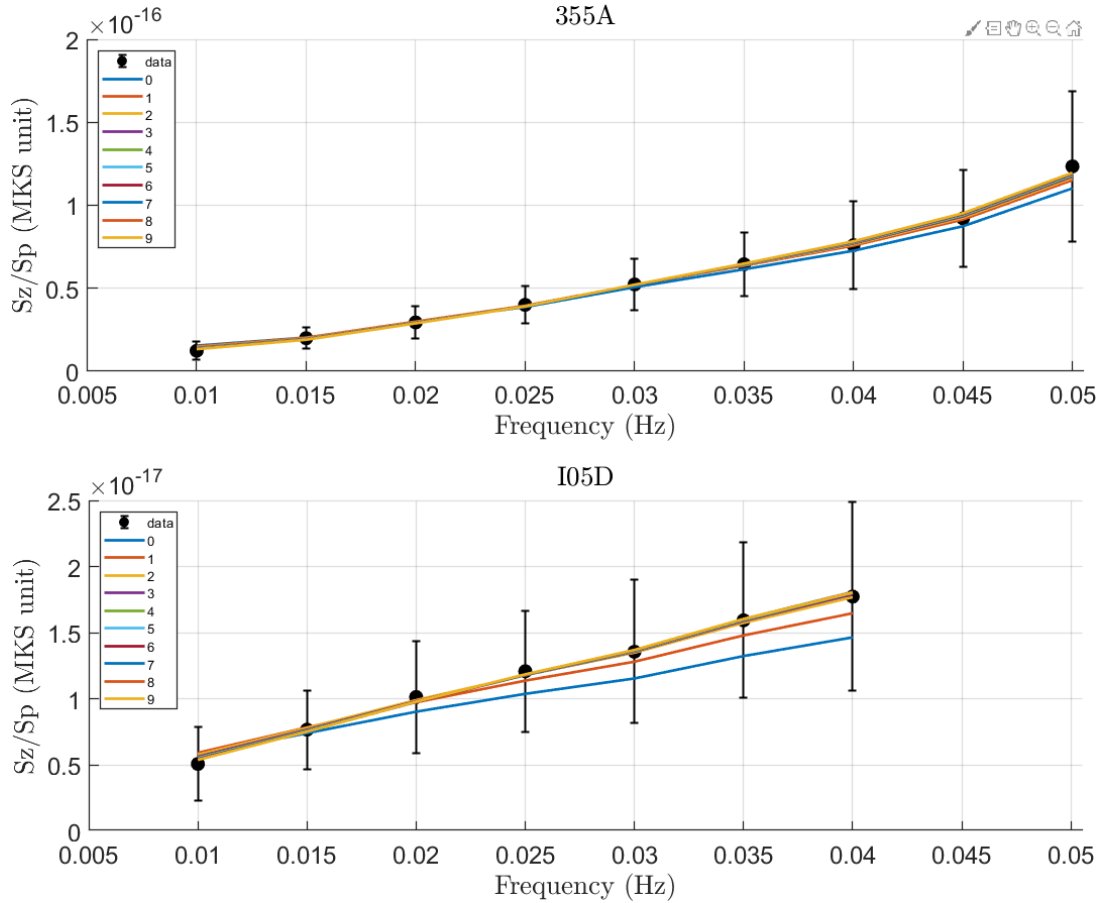


Figure 4. Nine inversion iterations and model fit at 355A and I05D. Data are observed with error bar as  $\pm 1$ . Nine lines are theoretical computed from layered models at each iteration.

After nine iterations, we decide which iteration is the final model by determining the improvement of the misfit using variance in equation (5) and variance reduction between the consecutive models.

$$\sigma^2 = \sum_{j=1}^m (\eta_o^i - \eta_T^i)^2 \#(5)$$

In most cases, the inversion converges after one or two iterations. Although the misfit could be further reduced with more iterations, improvements become quite small. Therefore, we select the final model when the normalized variance reduction of the next iterative model is less than 5% of the previous model.

Figure 5 show variance reduction for both 355A and I05D. All variance values are normalized to the variance of the starting model. In both cases, there are significant improvements of the misfit after the first iteration. Misfits then stay relatively flat for several more iterations which suggest improvements on the goodness of fit become small. For example, at I05D, the normalized variance in the first iteration is 23.9%, i.e., a variance reduction of 76.1%. Normalized variance at the second iteration is 9.4%, i.e., a variance reduction of 14.5%, still larger than the 5% threshold. Normalized variance at the third iteration is 6.6%, which suggests a variance reduction of only 2.8%, which falls below the 5% threshold. Therefore, for I05D, the final model is the layered model at the second iteration. While the 5% threshold is rather arbitrary, selecting nearby iterations would give similar results as seen from the convergence in Figure 4. After a final model is determined, we can estimate Vs30 from the picked model.

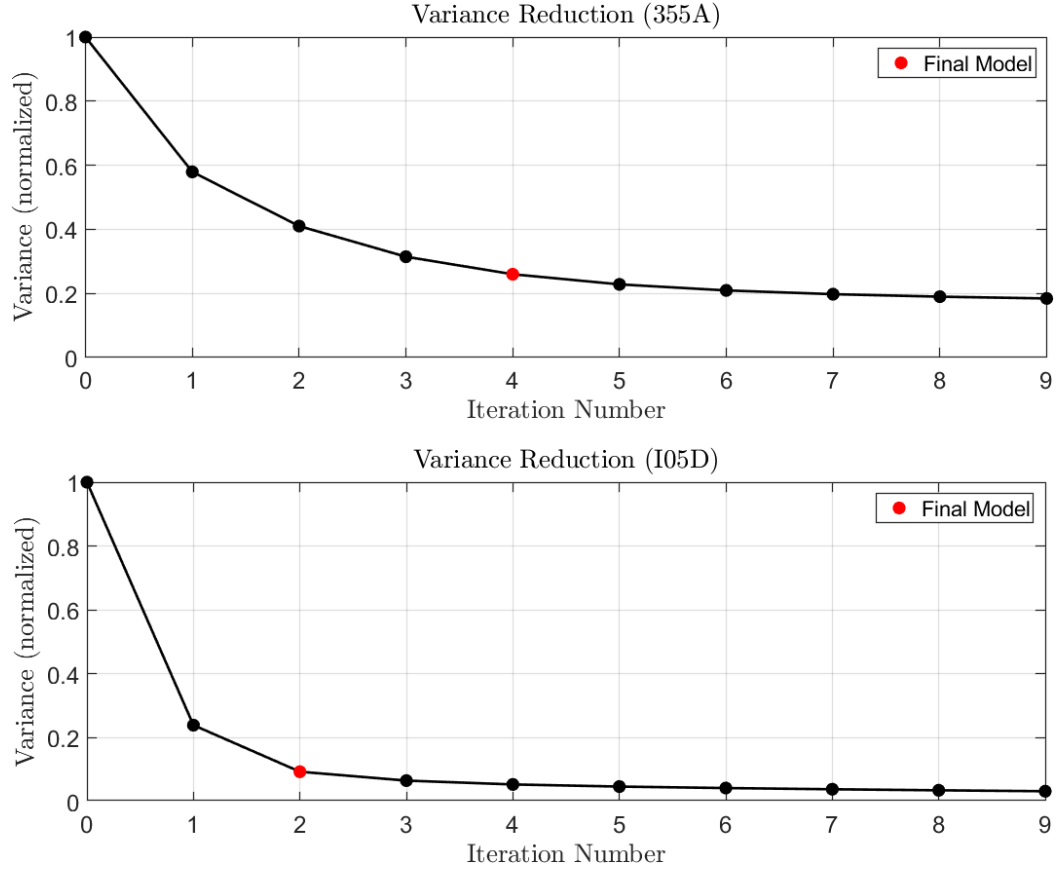


Figure 5. Variance reduction at 355A and I05D. Red points are the final models.

We estimate standard deviations of Vs30 results using covariance matrices of data measurements and model parameters, which are common for least-square inversions (e.g., Tarantola, 2005). Once we obtain standard deviations of shear-modulus and bulk-modulus in layered structures, we can estimate uncertainties in layered Vs and Vs30. Vs30 uncertainties are typically around 20-30% of the mean Vs30 estimate.

## Results

### Vs30 at 744 Stations

For all 744 stations, we follow the steps described in sections 2 and 3. We pick time intervals with high coherence and large pressure, construct individual starting models from half-space models at discrete frequencies, invert for layered structures with nine iterative steps, and determine final models by examining

variance reduction. Then we estimate Vs30 at these TA stations. Vs30 values for all 744 stations can be found in the supplementary material. Vs30 is defined as time-averaged shear-wave velocities in the top 30 meters, and can be computed following Boore (2004). Vs30 of 355A and I05D are reported in the titles of Figure 2.

Figure 6 illustrates the spatial distribution of Vs30 values. There are two predominant regions that have distinct Vs30 values among stations in the Eastern US. First, many stations along the Appalachian region have Vs30 faster than 700 m/s. Second, many stations within the Mississippian Alluvial Plain have Vs30 slower than 300 m/s. Similar patterns can be seen in various Vs30 models (e.g., Wald and Allen, 2007; Thompson and Silva, 2013). These two patterns are consistent with local geological settings. Many TA stations in the high-latitude regions such as Alaska and Territory of Yukon are quite unique. Some of these stations have Vs30 higher than the upper limit of the color bar (1200 m/s) and often have high uncertainties in the half-space estimates. There is evidence of significant seasonal changes in the low-frequency seismic noise, which is outside the scope of this paper and can be explored in the future.

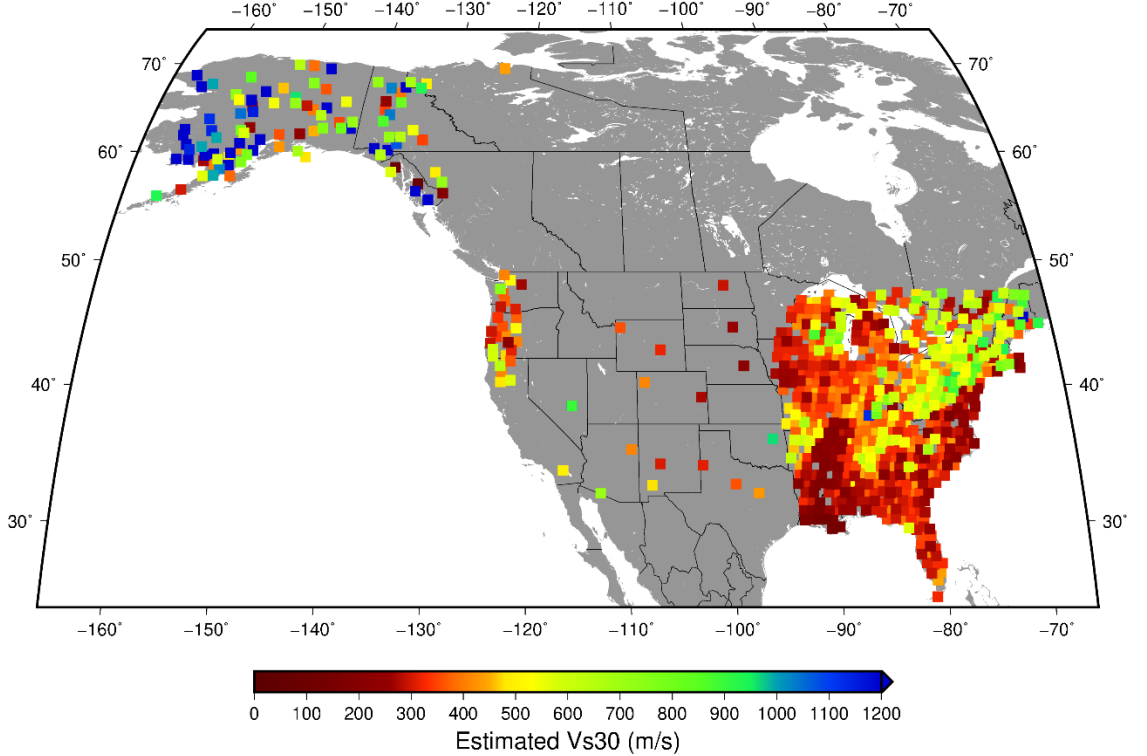


Figure 6. Vs30 results at 744 TA stations. Note that color bar saturates at 1200 m/s. Each station is located at the center of each square.

In Figure 7, we can further examine distributions of Vs30 in the Appalachian

and stations in the Mississippi alluvial plain. The first group includes stations in the latter two groups. In the stacked histogram (panel a of Figure 7), Appalachian stations (blue) accumulate at faster Vs30 and Mississippi stations (red) accumulate at slower Vs30. Such distributions confirm the visual patterns observed in Figure 6. In panel (d) of Figure 7, a box plot of the same three groups presents similar information as histograms shown above, where each box encompasses stations in their respective histogram. While distributions of the three groups overlap, the median Vs30 among each group is distinct. All contiguous US stations have a median Vs30 of 360 m/s, Appalachian stations have a faster median Vs30 of 544 m/s and Mississippi stations have a slower median Vs30 of 213 m/s. Information shown in the box plot is consistent with visual patterns seen in Figure 6. Besides these large-scale analyses of our results, we validated results from the inversion by comparing our estimates of Vs30 with measured Vs30 in the Southern California (Tanimoto and Wang, 2020).



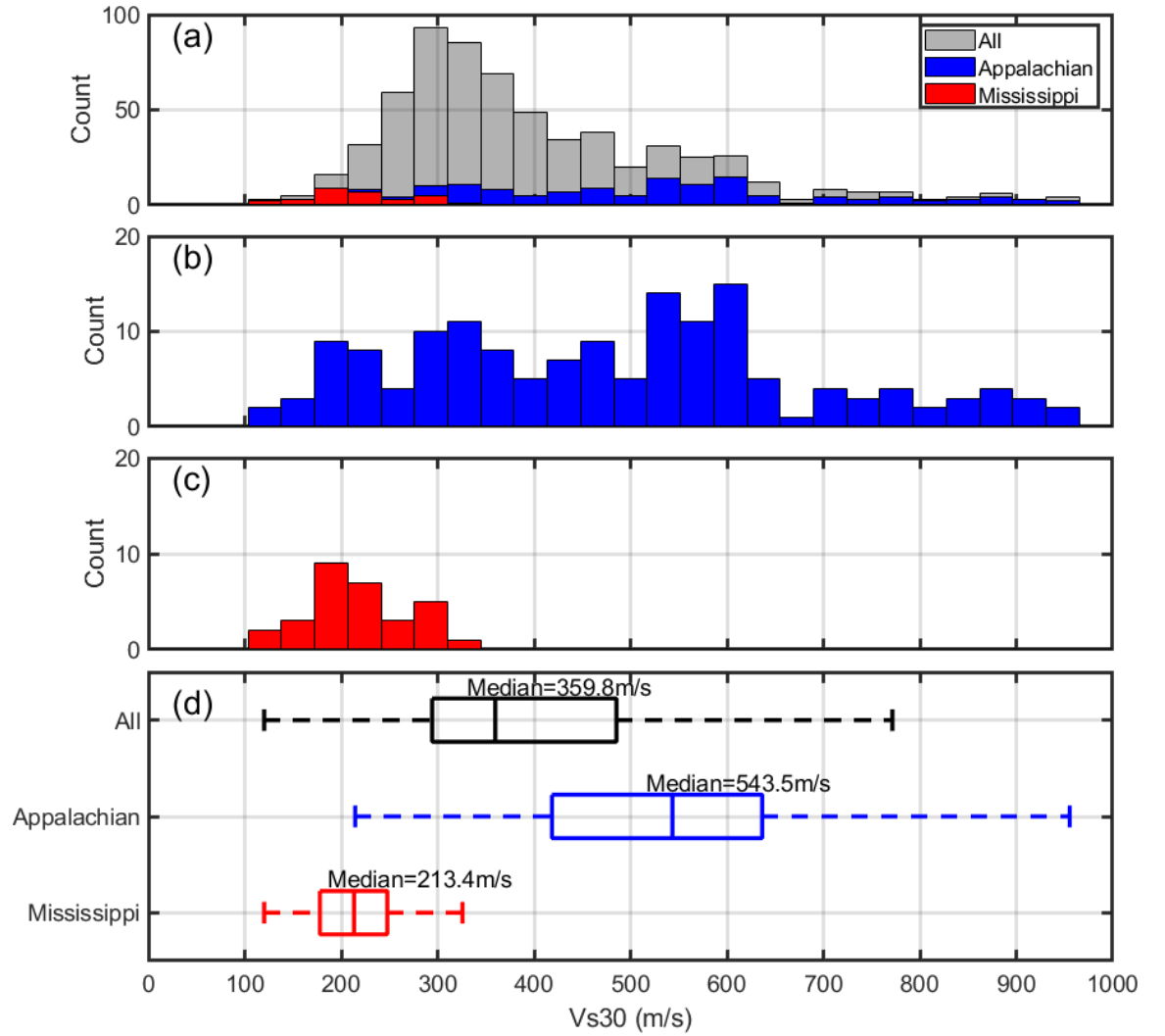


Figure 7. (a): Stacked histogram among three groups: all stations in the contiguous US, Appalachian stations and Mississippian stations. “All” stations include the latter two groups. (b): Histogram for all “Appalachian” stations. (c): Histogram for all “Mississippi” stations. (d): Box plot for three groups the same as the top panel. Vertical line within each box is the median Vs30 of that group. Boundaries of each box represent 25<sup>th</sup> and 75<sup>th</sup> percentile of that group. Whiskers extending to each side represent  $\pm 2.7$  of that group. Outliers outside of whiskers are omitted, but observable in the top panel.

## Comparison with Geological Maps

In this section, we compare our Vs30 results with two surficial geology maps. One map covers most of the northeast US (Soller and Garrity 2018); it includes sediment depths and overlaps with 215 TA stations. The other covers the conterminous United States (Soller et al, 2009) and includes different interpretations of surficial materials. This map includes 583 TA stations. We also compare our results with the Geologic Map of North America (GMNA, Garrity and Soller, 2009) which is a database of geological units such as rock types and rock ages. When near-surface structure is unknown, large-scale geological information and topographic slopes are commonly incorporated as proxies to infer parameters such as Vs30 (e.g., Park and Elrick, 1998; Wald and Allen, 2007). In Wang and Tanimoto (2020), we quantitatively compared our half-space results with the USGS Global Vs30 Mosaic (Wald and Allen, 2007), which is based on topographic slopes. We found that although large-scale patterns are consistent, station-wise correlation with interpolated Vs30 values from the gridded model is poor. This is expected because large-scale Vs30 models are not appropriate for interpreting local structures. Similarly here, correlations with large-scale geology maps will also be limited because it is unrealistic to expect accurate information at a local scale, i.e., at a single station. In this study, we compare with the various geological maps to understand the generality of our results. The goal is to find possible correlations, not to interpret each geology map in-depth.

We group TA stations with defined units on each map by matching stations with defined polygons on maps. We look at distributions of estimated Vs30 within separate units and interpret them based on three categories of information: sediment depth, surficial material, and geological unit.

We first compare estimated Vs30 at 215 TA stations with Quaternary sediment depths compiled in Soller and Garrity (2018). This covers previously glaciated US east of the Rocky Mountains. In panels (a) through (c) of Figure 8, most groups have overlapping distributions of Vs30. However, in all three categories of surficial sediments (coarse-grained, fine-grained and till), there are large differences between groups with sediment depths of 0-15 meters and 15-30 meters; “coarse-grained” and “fine-grained” sediments are related to wind or water transports. Intuitively, near-surface structure with coarse-grained sediments, such as sands and gravels, should have faster velocities than fine-grained sediments, such as silt and clay, due to their different material properties and depositional environments where coarse-grained sediments are often deposited on steeper slopes. Such interpretations are used in defining site classes based on measured profiles (Wills et al., 2000); however, this correlation often does not hold when inferring Vs30 using large-scale geological maps. Studies commonly demonstrate that locations defined as “coarse-grained sediments” do not have significantly different Vs30 from locations defined as “fine-grained sediments” (e.g., Park and Elrick, 1998). At a local scale, limited resolution of large-scale geological maps and uncertainties in the sediment depths likely contribute to the lack of correlations (Wills et al, 2015). In our comparisons between these two categories of sediments,

median Vs30 of “coarse-grained sediments” are faster than that of “fine-grained sediments” in both “0-15m” and “15-30m” groups. This is consistent with the interpretations above; however, the number of “fine-grained sediment” stations is small, thus less robust. On the other hand, till is the most widespread unit due to the unique geographic setting of this map. Till sediments are deposited from the interaction with previous glaciers in the region. Till sediment generally have faster velocities than typical soils (Thompson and Silva, 2013). Median Vs30s of “till” stations are similar to that of “coarse-grained sediments” stations, which are both faster than median Vs30 of “fine-grained sediments” stations.

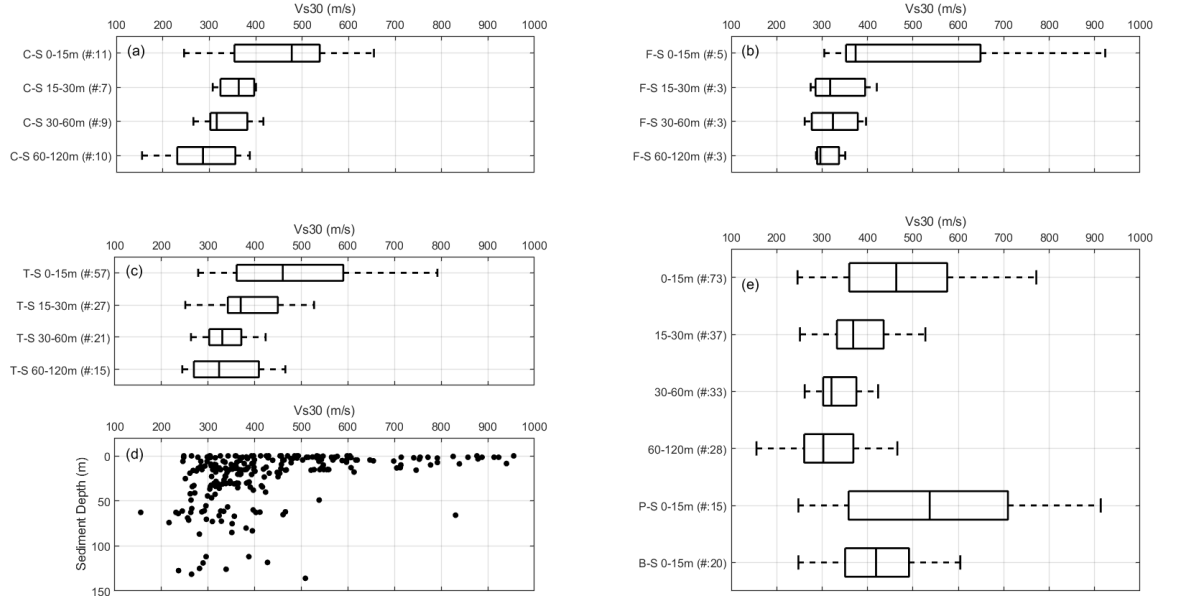


Figure 8. (a)-(c). Box plots of estimated Vs30 (x-axis) with respect to their Quaternary sediment depths. Vertical line within each box is the median Vs30 of that group. Boundaries of each box represent 25th and 75th percentile of that group. Whiskers extending to each side represent  $\pm 2.7$  of that group. (a). “C-S” stands for “coarse-grained sediments” and followed by their depths in meters. Numbers in the bracket are counts of stations within the unit. (b). “F-S” stands for “fine-grained sediments”. (c). “T-S” stands for “till sediments”. (d). Scatter plot between estimated Vs30 and sediment depths. (e). Box plot of Vs30 with three categories combined at different sediment depths. Top four boxes include all stations from (a) to (c). Bottom two boxes are two unique units. “P-S” stands for “Patchy Sediments”. “B-S” stands for “Bedrocks or Sediments”.

All groups with the thinnest sediments (0-15 meters) have wider distributions of Vs30, and their median Vs30s are faster than groups with thicker sediments. Wider distributions suggest Vs30s are more variable within the areas of thin sediments. This should be expected because stations with minimal underlying sediments will have significantly faster Vs30 than stations with 15 meters of

underlying sediment. “Till sediments” groups in panel (c) include the most stations among a total of 215 stations. We observe a large decrease in median Vs30s from “T-S 0-15m” to “T-S 15-30m” and a small decrease from “T-S 15-30m” to “T-S 30-60m”. Distributions of Vs30 between “T-S 30-60m” and “T-S 60-120m” are similar. Generally, stations with thicker underlying sediments should have slower Vs because seismic waves travel with slower speeds in the unconsolidated sediments than in bedrocks. Considering Vs30 is an averaged quantity for shear-wave velocities in the shallowest 30 meters, we can expect slower Vs30 in areas with thicker sediment depths. Once sediment depths exceed 30 meters, the presence of deeper sediments should not affect Vs30. Observations are consistent with this general principle. In panel (e), first four boxes are ensembles of three categories mentioned above. Two unique groups in panel (e) are “patchy sediments 0-15m” and “bedrocks or sediments 0-15m”. While these two groups have faster median Vs30 and wider distributions than groups with thick sediments, one would expect much faster Vs30 if bedrock is exposed at or very close to the surface. Distribution of Vs30 at these locations suggest that some unconsolidated sediments likely exist, which could be due to map uncertainties. Panel (d) of Figure 8 shows a direct correlation between Vs30 and sediment depths. Sediment depths are extracted from the raster file provided in Soller and Garrity (2018); this file assigns specific depths at all points. Although there is no distinct correlation, we observe one important pattern similar to three box plots: for stations with thin sediments, Vs30 has a wide range and some stations have fast Vs30, and for stations with tens of meters of sediments or more, Vs30 is slow. This pattern suggests that fast Vs30 stations are located in places with very thin sediments.

The second comparison is between 583 stations and their mapped surficial material units in Soller et al (2009). This map spans the conterminous US; it overlaps with more stations than the first comparison. It includes only descriptions of surficial materials but not specific thickness of sediments. Figure 9 includes all groups with more than 20 stations. It shows nine groups of stations that are defined by their surficial materials. These are sorted by their median values of Vs30. Three top groups are defined by “discontinuous” or “thin” sediments, and three bottom groups are defined by “Alluvial” or “Coastal zone” sediments. Top two groups are associated with colluvial and glacial till sediments. Colluvial (loess) and glacial till sediments typically have faster velocities than typical soils (Thompson and Silva, 2013). Meanwhile, alluvial and coastal sediments are expected to have slower seismic velocities. Despite the largely overlapping distributions, groupings of stations (Figure 9) fit our general understanding on the relationship between different types of surficial sediments and near-surface velocities. Although there is no information on sediment depths, surficial material interpretations from Soller et al (2009) are consistent with our Vs30 results.

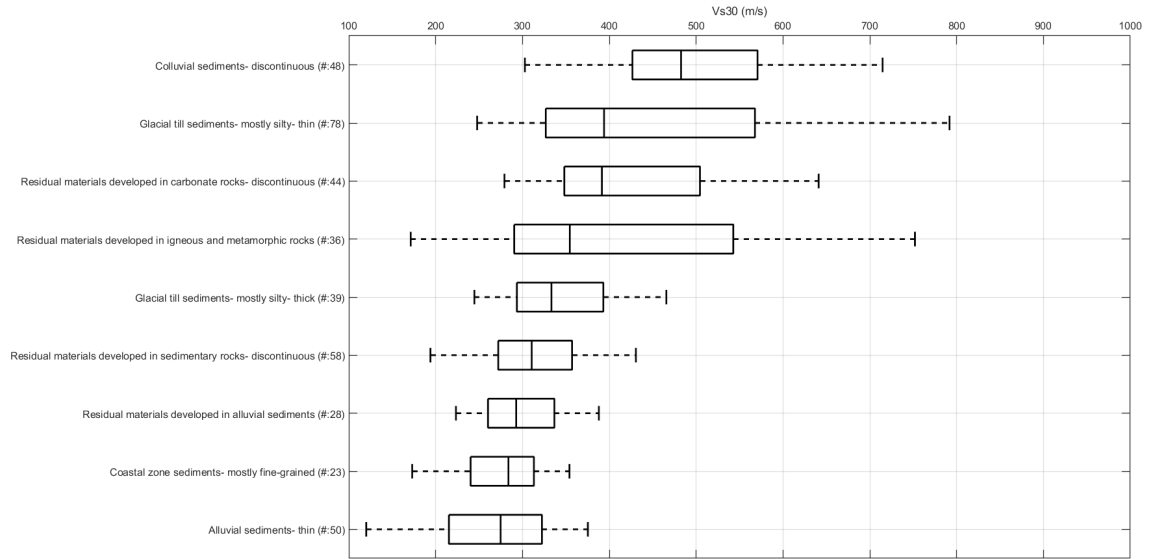


Figure 9. Box plot of estimated Vs30 (x-axis) with respect to their surficial material units. Y axis tick marks include unit names and the number of stations within that unit. Vertical line within each box is the median Vs30 of that group. Boundaries of each box represent 25th and 75th percentile of that group. Whiskers extending to each side represent  $\pm 2.7$  of that group.

Geological unit IDs are unique identifier numbers assigned to each unit in the GMNA. These IDs are non-repetitive, meaning geological units will have different IDs if they are at different locations, even if they have the same geological interpretations of rock types and ages. These ID numbers are rather arbitrary and are only related to the order of polygons in the shapefile. Therefore, grouping of stations by unit IDs is indicative of their locations and serves as an index to distinct nearby stations. Figure 10 shows ten geological units with most stations contained within. There are two units with distinct distributions, unit 33026 and unit 33786. Unit 33026's distribution of Vs30 is much slower than other units shown in the plot. It is described as a Quaternary sedimentary rock unit. As seen on the onset map, unit 33026 covers much of the Mississippi Alluvium Plain. This is consistent with the spatial features observed in Figure 6.

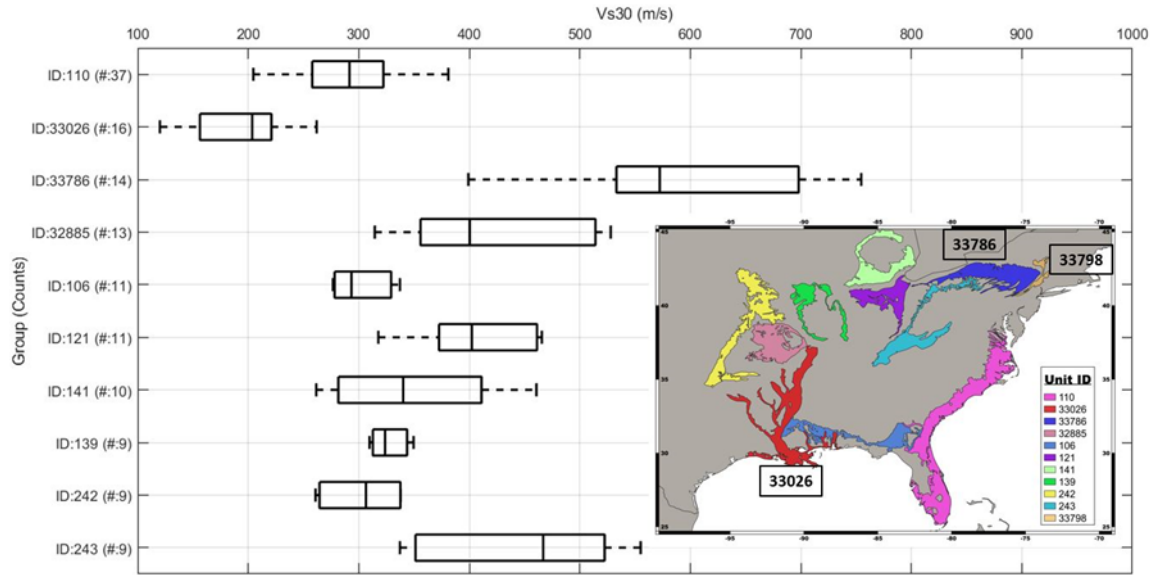


Figure 10. Box plot of estimated Vs30 (x-axis) with respect to their geological unit IDs. Units are highlighted on the onset map. Three focused units are labeled for clarity. Y axis tick marks include unit ID and the number of stations within that unit. Vertical line within each box is the median Vs30 of that group. Boundaries of each box represent 25th and 75th percentile of that group. Whiskers extending to each side represent  $\pm 2.7$  of that group.

In contrast, stations within unit 33786 have relatively fast Vs30. Unit 33786 is described as an Upper Devonian sedimentary rock unit; geographically it covers regions east of the Lake Erie and parts of the Appalachians. As shown in Figure 6 and 7, TA stations within the Appalachians have distinctively faster Vs30 than the rest of stations in the contiguous US. In the GMNA, geological units within the Appalachians are very complex and diverse; therefore, most individual units only contain five or fewer TA stations and are not shown in Figure 10. For instance, unit 33798 is an Ordovician sedimentary rock unit within the Appalachians, right next to unit 33786, as highlighted on the map. It is a smaller unit, and there are only four TA stations within the unit. Three stations have Vs30 greater than 825 m/s and one station has Vs30 of 571 m/s. The distribution of Vs30 for unit 33798 is much faster than units shown in Figure 10, but unit 33798 is not illustrated as a box because it only includes four stations. On the other hand, unit 33786 is a relatively large geological unit in the Appalachians.

Units 106, 139 and 242 are worth noting in terms of their compact distributions and very short whiskers on both sides. Their compact distributions suggest stations within these units have very similar Vs30 results. In general, nearby stations within the same geological units should have similar subsurface layers,

and stations with similar subsurface layers should share similar Vs30. These three geological units fit this ideal assumption; however, high spatial variability of Vs30 cannot be overlooked which makes on-site estimates of Vs30 important.

Comparisons between surficial sediment maps and contiguous stations' Vs30 results show promising trends that fit one's intuitive understanding on relationship between sediment depths and Vs30. In general, one cannot expect large-scale geological features to closely match with near-surface elastic structures because sedimentary thickness can vary on a local scale. Large-scale maps are not built for resolving local features, and near-surface structures are highly variable over a short distance both horizontally and vertically. Although comparisons with large-scale geological units are not ideal and cannot be truly indicative of the local information, we use such comparisons in this section due to the lack of other precise on-site measurements to compare with.

### Comparison with Half-Space Results

In our previous study (Wang and Tanimoto, 2020), we estimated half-space shear-modulus and Vs at 0.02 Hz using the same dataset. In that study, we analyzed data yearly to better examine temporal variation. Although half-space results cannot be used to provide Vs30 values, distributions of peak kernel depths (Figure 3) at various frequencies suggest that half-space results can provide insights on near-surface structures. Half-space results at different frequencies should correlate with Vs30 estimates with various gradients.

Figure 11 show scatter plots between estimated Vs30 and half-space Vs calculated using equations (1) and (2). Data from 0.01 to 0.02 Hz are generally more sensitive to deeper structure. If we assume layers at greater depths tend to have faster Vs, half-space results from 0.01 to 0.02 Hz should provide faster Vs than Vs from higher frequencies. We can confirm this trend by looking at distributions in Figure 11. Half-space Vs at lower frequencies (three top panels) tend to be faster than Vs30, whereas half-space Vs at higher frequencies (three bottom panels) tend to be slower than Vs30.

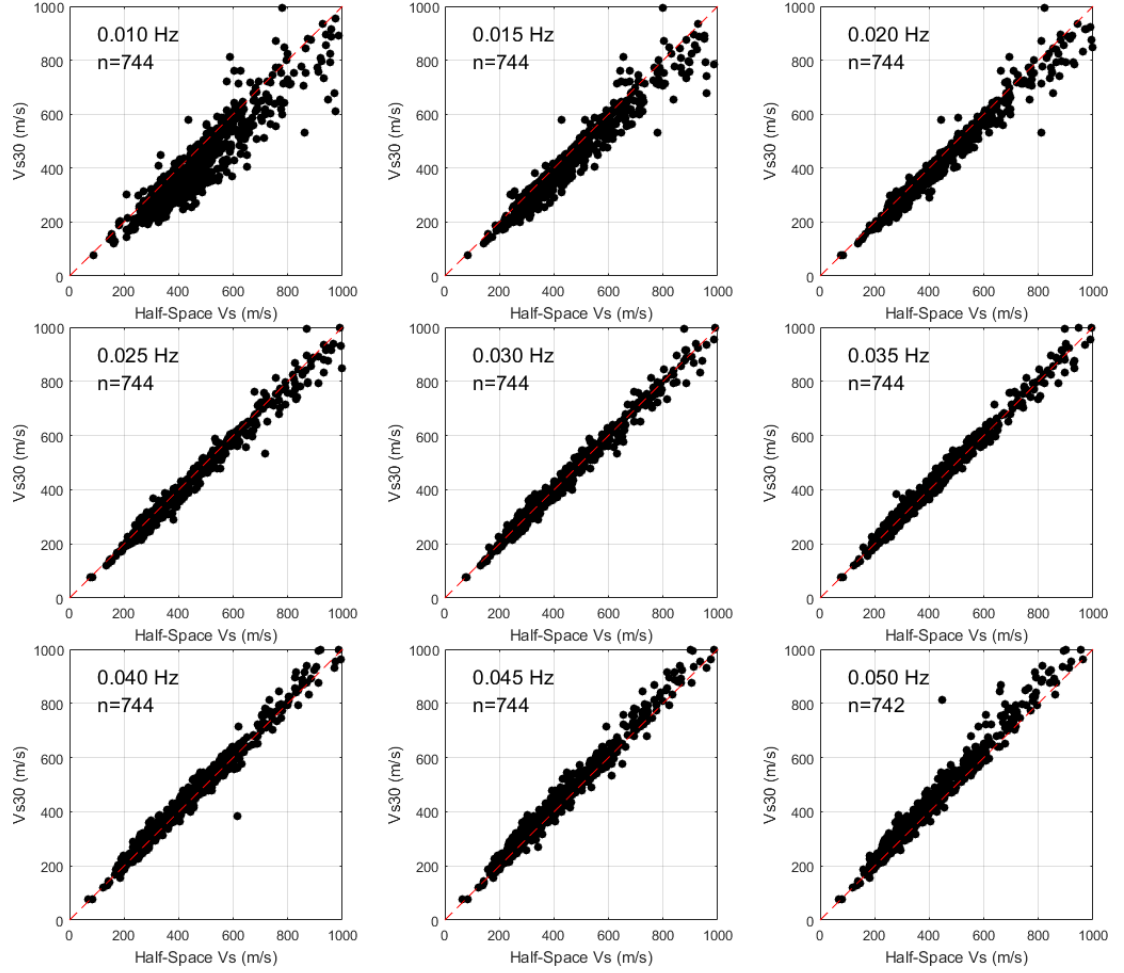


Figure 11. Comparison between half-space Vs (x-axis) and layered Vs30 at various frequencies (y-axis). Limits of all axes are set to 1000 m/s. Red diagonal dashed lines are one-to-one line. “n” is the total number of points in each panel.

One important pattern illustrated in Figure 11 is the correlation between half-space results and Vs30 from inversion. This correlation is not surprising for two reasons: first, the two methods are closely related. The inversion aims to fit data at discrete frequencies for which the data are proportional to half-space elastic parameters. Second, the half-space Vs is indicative of structure in the near-surface layers, which are the same layers in the inversion results. Although near-surface structure information obtained from the inversion is preferred due to its ability to provide depth-dependent elastic parameters, the strong correlation in Figure 11 shows that the half-space approach provides a first order estimate of Vs in the uppermost layers.



## Frequency Range

While we observe high coherence between seismic and pressure data at 0.05 Hz (Tanimoto and Wang, 2018), there is a greater uncertainty. Therefore, in our inversion we consider two scenarios at every station — set the maximum frequency at either 0.04 Hz or 0.05 Hz. In our final analysis, we select the upper limit at each station by examining inverted models and fits to the data.

In Figure 12, we observe highly correlated Vs30 for the two frequency ranges which suggests inclusion of data from 0.04 to 0.05 Hz has very little effect on the Vs30 estimates. As shown in Figure 3, peak depths of kernels at 0.045 Hz and 0.05 Hz for 355A are very close to the peak depth of the kernel at 0.04 Hz. Although kernels vary among stations, this pattern generally holds which imply data between 0.04 and 0.05 Hz provide depth constraints similar to that of 0.04 Hz.

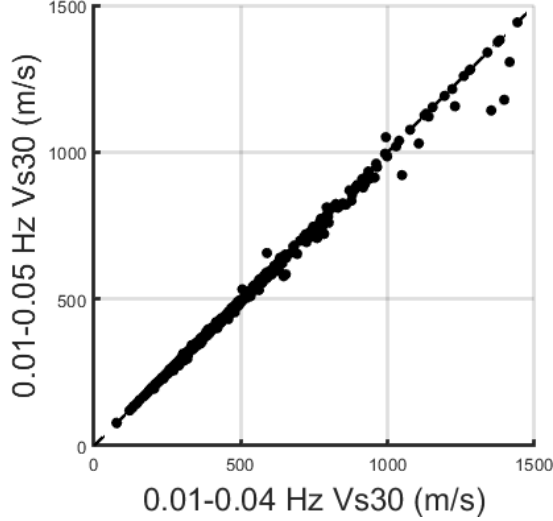


Figure 12. Comparison of inverted Vs30 in two frequency ranges: 0.01-0.05 Hz versus 0.01-0.04 Hz.

As an extension of discussion on the upper frequency limit of inversion, we compile distributions of peak depths of shear-modulus sensitivity kernels at all stations. For example, peak depths of 355A and I05D are illustrated as horizontal dashed lines in Figure 3. Figure 13 illustrates the ensemble of peak depths at different frequencies between 0.01 and 0.05 Hz for all stations. The striking feature is that the median peak depths is nearly constant for frequencies greater than 0.03 Hz. This suggests that the depth resolution of frequencies ranging from 0.03 to 0.05 Hz are quite similar.

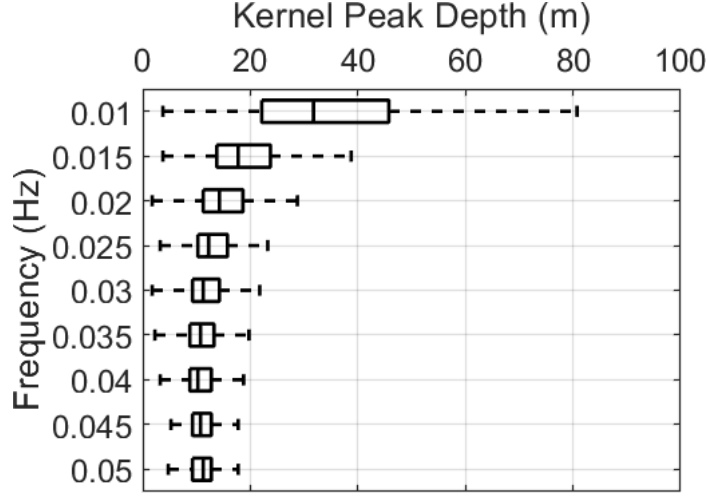


Figure 13. Box plot of peak depths of shear-modulus sensitivity kernels from 0.01 to 0.05 Hz. Vertical line within each box is the median peak depth of that frequency. Boundaries of each box represent 25th and 75th percentile of the distribution. Whiskers extending to each side represent  $\pm 2.7\sigma$ . Outliers outside of whiskers are omitted.

One caveat about peak depths of sensitivity kernels is that kernels are closely related to pressure-wave speed,  $c$ , as reflected in equation (5). Pressure-wave speeds are the speed of propagating pressure waves at the surface. They are typically within 1-10 m/s. At an individual station, if the pressure-wave speeds are particularly fast or slow, the peak depths of kernels at this station will be different from other stations; therefore, we focus the discussion on the general distributions of peak depths across frequencies, instead of focusing on individual stations. Despite the dependency on pressure-wave speeds, distributions of peak depths across different frequencies shown in Figure 13 illustrate the trend in the depth resolution of our results. Namely, the resolved structures become shallower for frequencies from 0.01 to 0.03 Hz and remain relatively constant at a fixed depth from 0.03 to 0.05 Hz.

Figure 13 reveals two limitations of the inversion method. First, our inverted velocity profiles are much smoother compared to other higher-frequency or dense-array methods. Our velocity profiles cannot recover sharp velocity changes. This is evident in the velocity profiles in Figure 2. Because of the low frequency range of our study, the depth resolution is limited. On the other hand, because we aim to estimate  $V_{s30}$ , which is an averaged quantity for the upper 30 meters, the inversion method still provides reasonable estimates. Comparison with on-site measured  $V_{s30}$  in Tanimoto and Wang (2020) supports such a claim. Second, even with the upper frequency limit of 0.05 Hz, we cannot resolve the uppermost layer shallower than 5-10 meters. In Figure 13, the minimum median peak depths of shear-modulus kernels are still deeper than 10 meters. This suggests

we typically lack sensitivity for structures shallower than 10 meters. Uppermost velocity profiles of 355A and I05D (Figure 2) show faster Vs at 0-10 meters than Vs at 10-20 meters due to the lack of resolution in uppermost 10 meters. The uppermost velocities are essentially aligned with half-space parameters at the highest frequency in the starting models and are not affected by the iterative process due to the lack of sensitivity. To construct more accurate velocity profiles, we need to either extend to higher frequencies or combine with a different approach.

## Conclusion

In this study, we applied the inversion method (Tanimoto and Wang, 2019) to all available USArray TA stations operating between Jan 1, 2012 and Jan 1, 2019. We estimated near-surface elastic parameters for layered structures and Vs30 at these stations. We compared our Vs30 results with various surficial geological maps. There are promising agreements between Vs30 and Quaternary sediment depths. We examine the nature of the inversion method by comparing with half-space results and observing peak depths of sensitivity kernels across frequencies.

We find good correlation between Vs30 and half-space Vs at discrete frequencies between 0.01 and 0.05 Hz. While the inversion method should be used to retrieve important parameters such as Vs30, the half-space approach is much easier to implement and much faster to compute. The half space Vs values are comparable with Vs30 estimated with the inversion method. The half-space approach can be used as a quick tool to determine key information regarding the near-surface structure.

Analysis and examination of peak depths of sensitivity kernels at various frequencies reveal two limitations of the inversion method. First, our estimated velocity profiles are much smoother than those found by conventional high-frequency approaches (e.g., MASW). The limitation is partially resolved because Vs30 is an averaged quantity; the lack of sharp velocity is not critical. Second, the inversion method currently cannot resolve structure shallower than 5 or 10 meters given the upper frequency limit of 0.05 Hz. This limitation could potentially introduce errors in our estimations of Vs30 if there are significantly different materials within the uppermost 10 m. We can resolve this limitation by extending our analysis to higher frequencies or by adding new constraints and information to our velocity models.

In conclusion, we estimate Vs30 at 744 TA stations following the inversion method in Tanimoto and Wang (2019). Vs30 is the time-averaged shear-wave velocity down to 30-meters depth. It is one of the most important parameters for seismic hazard studies (e.g., Dobry et al, 2000). On a map of the US, two groups of TA stations stand out. Stations in the Appalachian region tend to have faster Vs30; stations in the Mississippi Alluvial Plain tend to have slower

Vs30. These two patterns are consistent with large-scale geological settings and are corroborated by the GMNA (Garrity and Soller, 2009). There are also good agreements between our estimated Vs30 and Quaternary sediment depths in surficial geology maps (Soller et al, 2009; Soller and Garrity, 2018), where stations with thicker underlying sediments tend to have slower Vs30; stations with thin underlying sediments tend to have wider distributions of Vs30. Different distributions of Vs30 on different categories of surficial materials also agree with the general understanding between seismic velocity and sediment types. Although there are no available measured velocity profiles to compare with the TA stations, we previously validated our single-station approach by comparing with measured velocity profile in the Piñon Flat Observatory (Tanimoto and Wang, 2020). We support the more straightforward half-space approach because it correlates well with Vs30 found in the layered structure. The inversion method is still preferred due to its ability to provide depth constraints and to construct layered models.

### Acknowledgments

The authors greatly appreciate Ralph Archuleta for detailed comments and suggestions on the manuscript. We are grateful for efficient service and great datasets provided by IRIS and the EarthScope project. This work is supported by grants from the United States Geological Survey (USGS #G20AP00024) and the Southern California Earthquake Center (SCEC #19037, #20072). SCEC is funded by NSF Cooperative Agreement EAR-1600087 & USGS Cooperative Agreement G17AC00047.

### Data Availability Statement

Data for all results presented in this manuscript are publicly available and accessed from the IRIS DMC (Incorporated Research Institutions for Seismology Data Management Center). Codes and output files for this manuscript are available on <http://doi.org/10.5281/zenodo.5551178>.

### References

- Boore, D. M (2004); Estimating  $\bar{V}_s(30)$  (or NEHRP Site Classes) from Shallow Velocity Models (Depths < 30 m). *Bulletin of the Seismological Society of America*, 94 (2): 591–597. doi: 10.1785/0120030105.
- Borcherdt, R. D (1994). Estimates of Site-Dependent Response Spectra for Design (Methodology and Justification). *Earthquake Spectra*, 10(4), 617–653, doi: 10.1193/1.1585791.
- Crawford, W. C., Webb, S. C., and Hildebrand, J. A. (1991). Seafloor compliance observed by long-period pressure and displacement measurements. *Journal of Geophysical Research*, 96(B10), 16,151–16,160.

- Dobry, R., Borcherdt, R. D., Crouse, C. B., Idriss, I. M., Joyner, W. B., Martin, G. R., Power, M. S., Rinne, E. E., and Seed, R. B (2000). New Site Coefficients and Site Classification System Used in Recent Building Seismic Code Provisions. *Earthquake Spectra*, 16(1), 41–67, doi: 10.1193/1.1586082.
- Dou, S., Lindsey, N., Wagner, A.M. et al. Distributed Acoustic Sensing for Seismic Monitoring of The Near Surface: A Traffic-Noise Interferometry Case Study. *Sci Rep* 7, 11620 (2017), doi: 10.1038/s41598-017-11986-4.
- Garrity, C.P., and Soller, D.R. (2009), Database of the Geologic Map of North America: Adapted from the Map by J.C. Reed, Jr. and others (2005): *U.S. Geological Survey Data Series 424*, doi: 10.3133/ds424.
- Kenda, B., Lognonne, P., Spiga, A., Kawamura, T., Kedar, S., Banerdt, W. B., et al. (2017). Modeling of ground deformation and shallow surface waves generated by Martian dust devils and perspectives for near-surface structure inversion. *Space Science Reviews*, 211, 501–524, doi:10.1007/s11214-017-0378-0.
- McNamara, D. E., and R. P. Buland (2004). Ambient noise levels in the continental United States, *Bulletin of the Seismological Society of America*. 94, no. 4, 1517–1527, doi: 10.1785/012003001.
- Nakamura, Y. (1989) A method for dynamic characteristics estimation of sub-surface using microtremor on the ground surface. *Quarterly Report of Railway Technical Research*, 30, 25–33.
- Park, S and Elrick. S (1998), Predictions of shear-wave velocities in southern California using surface geology. *Bulletin of the Seismological Society of America*, 88 (3): 677–685.
- Park, B. C, Miller, D. R, and Xia. J (1999). Multichannel analysis of surface waves. *Geophysics*, 64(3), 659–992. doi:10.1190/1.1444590.
- Park, S., and M. Ishii (2018) Near-surface compressional and shear wave speeds constrained by body-wave polarization analysis, *Geophysical Journal International*, 213(3), 1559–1571, doi:10.1093/gji/ggy072.
- Sánchez-Sesma, F. J., and Crouse, C. B. (2015), Effects of site geology on seismic ground motion: early history. *Earthquake Engineering Structural Dynamics*, 44, 1099–1113, doi: 10.1002/eqe.2503.
- Soller, D.R., Reheis, M.C., Garrity, C.P., and Van Sistine, D.R. (2012), Map Database for Surficial Materials in the Conterminous United States: *U.S. Geological Survey Data Series 425*, doi: 10.3133/ds425.
- Soller, D.R., and C.P. Garrity (2018), Quaternary sediment thickness and bedrock topography of the glaciated United States east of the Rocky Mountains: *U.S. Geological Survey Scientific Investigations Map 3392*, doi: 10.3133/sim3392.

- Sorrells, G. G. (1971). A preliminary investigation into the relationship between long-period seismic noise and local fluctuations in the atmospheric pressure field, *Geophysical Journal International*. 26(1-4), 71–82, doi: 10.1111/j.1365-246X.1971.tb03383.x.
- Sorrells, G. G., McDonald, J.A., Der, Z.A., and Herrin, E. (1971). Earth Motion Caused by Local Atmospheric Pressure Changes, *Geophysical Journal International*, 26(1-4), 83–98, doi:10.1111/j.1365-246X.1971.tb03384.x.
- Tanimoto, T., and L. Rivera (2008) The ZH ratio method for long-period seismic data: sensitivity kernels and observational techniques, *Geophysical Journal International*, 172(1), 187–198, doi: 10.1111/j.1365-246X.2007.03609.x.
- Tanimoto, T., and J. Wang (2018). Low-frequency seismic noise characteristics from the analysis of co-located seismic and pressure data, *Journal of Geophysical Research: Solid Earth*. 123, no. 7, 5853–5885, doi: 10.1029/2018JB015519.
- Tanimoto, T., and J. Wang (2019). Theory for deriving shallow elasticity structure from colocated seismic and pressure data, *Journal of Geophysical Research: Solid Earth*. 124, no. 6, 5811–5835, doi: 10.1029/2018JB017132.
- Tanimoto, T., and J. Wang (2020) Shallow elasticity structure from colocated pressure and seismic stations in the Piñon Flat Observatory and estimation of Vs30, *Geophysical Journal International*, 222(1), 678–696, doi:10.1093/gji/ggaa195.
- Tarantola, A. (2005). Inverse Problem Theory and Methods for Model Parameter Estimation, Statistical Modeling and Decision Science, *SIAM*, doi: 10.1137/1.9780898717921.
- Thompson, E and W. Silva. (2013). Empirical Assessment of Site Amplification and Development of NEHRP Factors for CEUS: Collaborative Research with Pacific Engineering and Tufts University (*Final Technical Rept.*): U.S. Geol. Survey, [https://earthquake.usgs.gov/cfusion/external\\_grants/reports/G12AP20004.pdf](https://earthquake.usgs.gov/cfusion/external_grants/reports/G12AP20004.pdf).
- Trifunac, M. D (2016). Site conditions and earthquake ground motion - A review. *Soil Dynamics and Earthquake Engineering*, 90, 88–100, doi: 10.1016/j.soildyn.2016.08.003.
- Tyttell, J., F. Vernon, M. Hedlin, C. de Groot Hedlin, J. Reyes, B. Busby, K. Hafner, and J. Eakins (2016). The USArray transportable array as a platform for weather observation and research, *Bulletin of the American Meteorological Society*. 97, 603–619, doi: 10.1175/BAMS-D-14-00204.1.
- Wald, D., and T. Allen (2007). Topographic slope as a proxy for seismic site conditions and amplification, *Bulletin of the Seismological Society of America*. 97, no. 5, 1379–1395, doi: 10.1785/0120060267.
- Wang, J., and T. Tanimoto (2020). Estimating Near-Surface Rigidity from Low-Frequency Noise Using Collocated Pressure and Horizontal Seismic

Data. *Bulletin of the Seismological Society of America*, 110 (4): 1960–1970, doi: 10.1785/0120200098.

Wilcox, R. (2012). Estimating measures of location and scale, Chapter 3, in *Introduction to Robust Estimation and Hypothesis Testing*, Third Ed., R. Wilcox, Statistical Modeling and Decision Science, Academic Press, Boston, Massachusetts, 43–101.

Wills, C.J., M. Petersen, W. A. Bryant, M. Reichle, G. J. Saucedo, S. Tan, G. Taylor, J. Treiman (2000) A Site-Conditions Map for California Based on Geology and Shear-Wave Velocity. *Bulletin of the Seismological Society of America*, 90 (6B): S187–S208, doi: 10.1785/0120000503

Will, C.J., C. I. Gutierrez, F. G. Perez, D. M. Branum (2015) A Next Generation  $VS_{30}$  Map for California Based on Geology and Topography. *Bulletin of the Seismological Society of America*, 105 (6): 3083–3091. doi: 10.1785/0120150105

Yong, A., Martin, A., Stokoe, K., Diehl, J (2013). ARRA-Funded  $V_{S30}$  Measurements Using Multi-Technique Approach at Strong-Motion Stations in California and Central-Eastern United States (*Open-File Rept.*): U.S. Geol. Survey. 2013-1102, 60, <http://pubs.usgs.gov/of/2013/1102/>.